

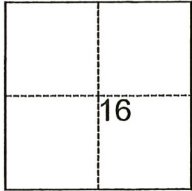
CORNER RECORD

Agency Index CR-19-124
Document Number _____

City of Stockton County of San Joaquin, California
Brief Legal Description Lot 11 of Tract No. 1997, The Greensward in M.&P. 27-69.

CORNER TYPE

COORDINATES (Optional)



T.2N., R.6E.

- Government Corner
- Meander
- Rancho
- Control
- Property
- Other

Date of Survey September 13, 2019

N. _____ E. _____
 Elevation _____
 Units Metric U.S. Survey Foot
 Horizontal Datum _____
 Zone _____ Epoch Date _____
 Vertical Datum _____
 Complies with Public Resources Code §§8801-8819
 Complies with Public Resources Code §§8890-8902

PLS Act Ref.: 8765(d) 8771 8773 Other:
 Corner/Monument: Left as found Established Rebuilt Pre-Construction
 Found and tagged Reestablished Referenced Post-Construction

Narrative of corner identified and monument as found, set, reset, replaced, or removed:
 See sheet #2 for description(s):

SURVEYOR'S STATEMENT

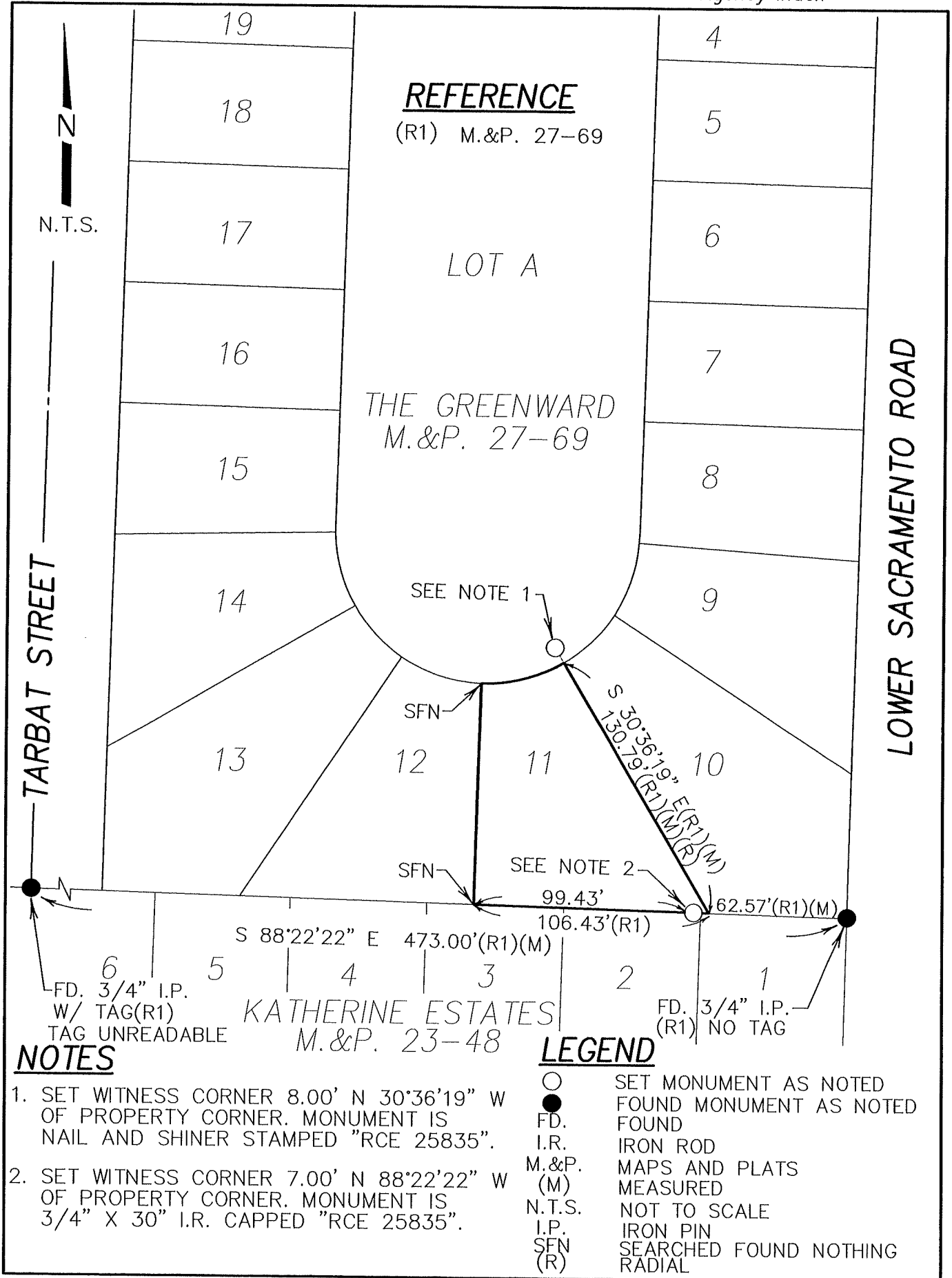
This Corner Record was prepared by me or under my direction in conformance with
 the Professional Land Surveyors' Act on October 14, 2019
 Signed [Signature] P.L.S. or R.C.E. No. 25835



COUNTY SURVEYOR'S STATEMENT

This Corner Record was received October 19, 2019
 and examined and filed October 23, 2019
 Signed James E. Hart P.L.S. or R.C.E. No. 8657
 Title County Surveyor
 County Surveyor's Comment _____





NOTES

1. SET WITNESS CORNER 8.00' N 30°36'19" W OF PROPERTY CORNER. MONUMENT IS NAIL AND SHINER STAMPED "RCE 25835".
2. SET WITNESS CORNER 7.00' N 88°22'22" W OF PROPERTY CORNER. MONUMENT IS 3/4" X 30" I.R. CAPPED "RCE 25835".

LEGEND

- SET MONUMENT AS NOTED
- FOUND MONUMENT AS NOTED
- FD. FOUND
- I.R. IRON ROD
- M.&P. MAPS AND PLATS
- (M) MEASURED
- N.T.S. NOT TO SCALE
- I.P. IRON PIN
- SFN SEARCHED FOUND NOTHING
- (R) RADIAL