

# CORNER RECORD

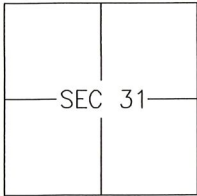
Agency Index CR-19-121

Document Number \_\_\_\_\_

City of STOCKTON

County of SAN JOAQUIN, California

Brief Legal Description INTERSECTION OF MARCH LANE AND BROOKSIDE ROAD



T2N/R6E

### CORNER TYPE

- Government Corner  Control   
 Meander  Property   
 Rancho  Other

Date of Survey 2019-07-19

### COORDINATES (Optional)

- N. \_\_\_\_\_ E. \_\_\_\_\_  
 Elevation \_\_\_\_\_  
 Units Metric  U.S. Survey Foot   
 Horizontal Datum \_\_\_\_\_  
 Zone \_\_\_\_\_ Epoch Date \_\_\_\_\_  
 Vertical Datum: \_\_\_\_\_  
 Complies with Public Resources Code §§8801-8819  
 Complies with Public Resources Code §§8890-8902

PLS Act Ref.:  8765(d)  8771  8773

Other: \_\_\_\_\_

Corner/Monument:  Left as found  Established  Rebuilt  Pre-Construction  
 Found and tagged  Reestablished  Referenced  Post-Construction

Narrative of corner identified and monument as found and set or reset:

See sheet #2 for description(s):

### SURVEYOR'S STATEMENT

This Corner Record was prepared by me or under my direction in conformance with

the Land Surveyor's Act on 18 SEPTEMBER, 2019.

Signed [Signature] P.L.S. or R.C.E. No.: 8040



### COUNTY SURVEYOR'S STATEMENT

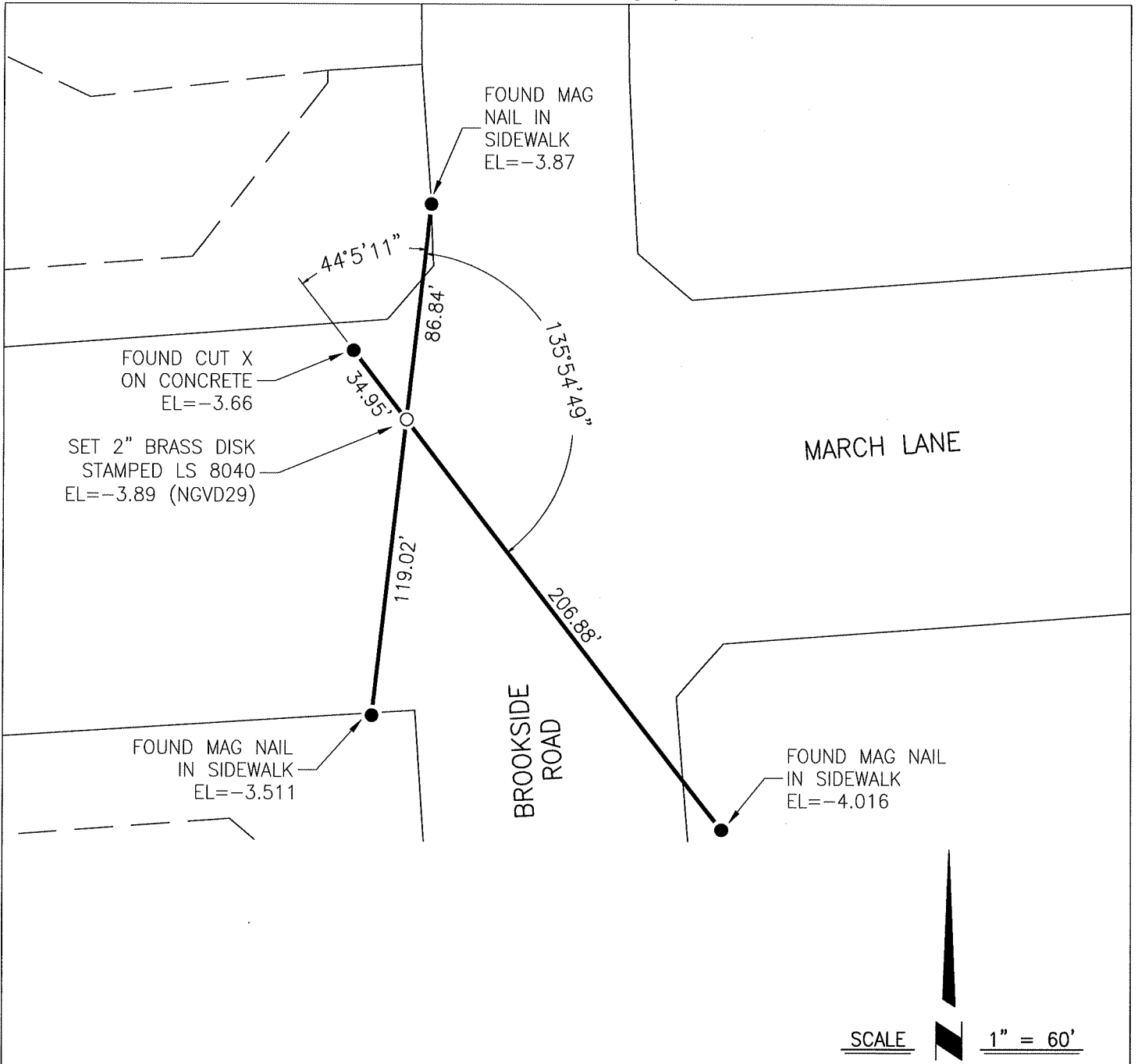
This Corner Record was received September 23, 2019 and examined and filed October 4, 2019.

Signed James E. Hart P.L.S. or R.C.E. No.: 8657

Title County Surveyor

County Surveyor's Comment \_\_\_\_\_





LEGEND

- FOUND REFERENCE POINT PER SAN JOAQUIN COUNTY CR 19-71
- SET BENCHMARK AS NOTED
- CR CORNER RECORD, SAN JOAQUIN COUNTY SURVEYOR'S RECORDS