

# CORNER RECORD

Agency Index CR-19-114  
Document Number \_\_\_\_\_

City of LATHROP County of SAN JOAQUIN, California  
Brief Legal Description LOT 9 OF TRACT NO. 2529, BOOK 31 OF M&P, PAGE 85, SAN JOAQUIN CO. RECORDS.

### CORNER TYPE

### COORDINATES (Optional)


- Government Corner     Control  
 Meander                     Property  
 Rancho                          Other

Date of Survey JULY 16, 2019

N. \_\_\_\_\_ E. \_\_\_\_\_  
Elevation \_\_\_\_\_  
Units     Metric                     U.S. Survey Foot  
Horizontal Datum \_\_\_\_\_  
Zone \_\_\_\_\_ Epoch Date \_\_\_\_\_  
Vertical Datum \_\_\_\_\_  
 Complies with Public Resources Code §§8801-8819  
 Complies with Public Resources Code §§8890-8902

PLS Act Ref.:     8765(d)                     8771                     8773                     Other  
Corner/  
Monument:     Left as found                     Established                     Rebuilt                     Pre-Construction  
                   Found and tagged                     Reestablished                     Referenced                     Post-Construction

Narrative of corner identified and monument as found, set, reset, replaced, or removed:

See sheet #2 for description(s):

FOUND CENTERLINE MONUMENTS REFERENCED ON THE ABOVE-REFERENCED TRACT MAP. FOUR PROPERTY CORNERS WERE NOT FOUND; SET NAIL WITH CROSS ON HEAD AND A 1.5" DIAMETER WASHER STAMPED "LS 7992 SURVEY CONTROL" IN ASPHALT AS SHOWN ON SHEET 2.

### SURVEYOR'S STATEMENT

This Corner Record was prepared by me or under my direction in conformance with the Professional Land Surveyor's Act on JULY 29, 2019

Signed [Signature] P.L.S. or R.G.E. No. 7992



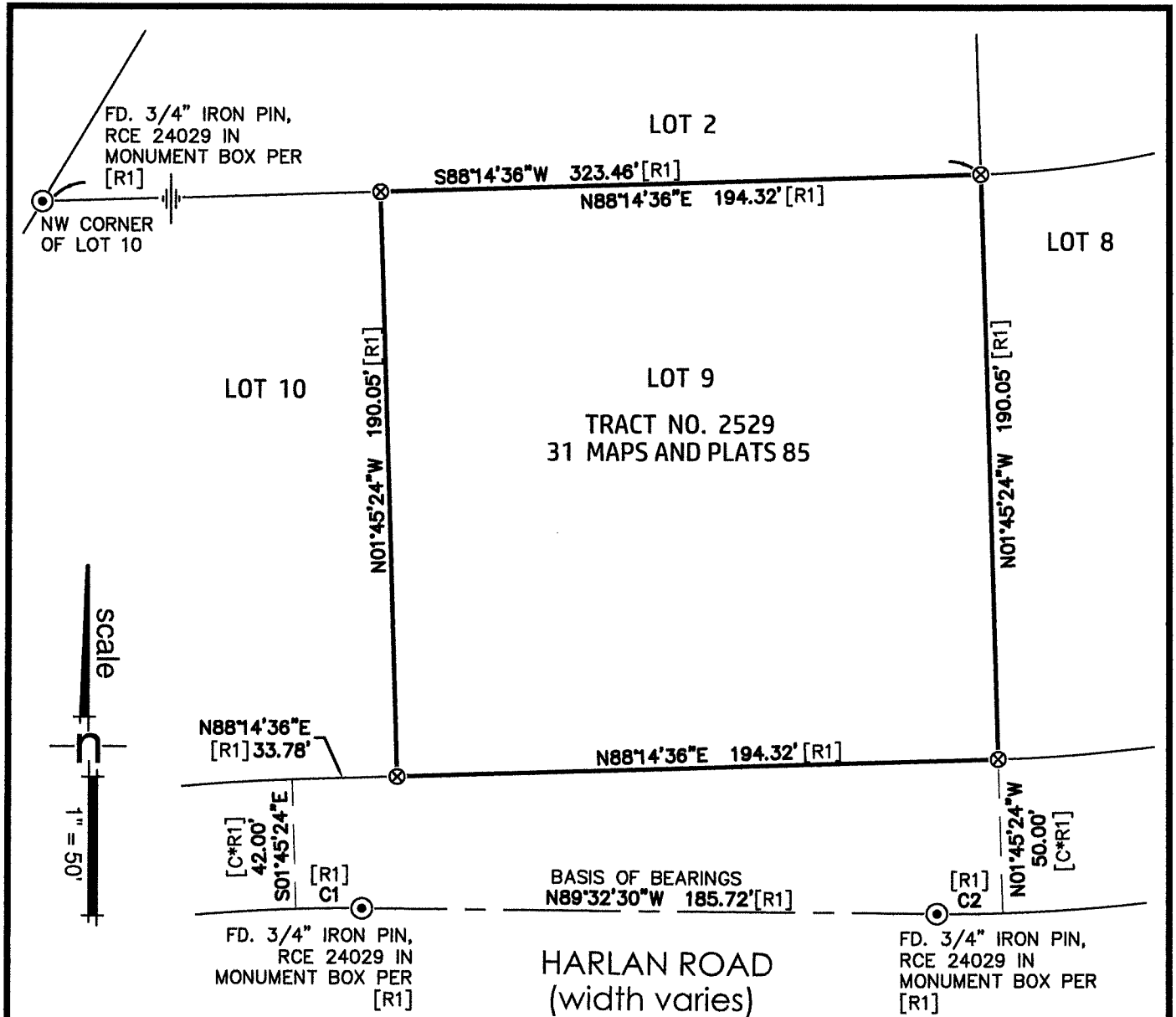
### COUNTY SURVEYOR'S STATEMENT

This Corner Record was received September 18, 2019 and examined and filed October 1, 2019

Signed James E. Hart P.L.S. or R.G.E. No. 8657  
Title County Surveyor

County Surveyor's Comment





### BASIS OF BEARINGS

THE BEARING OF NORTH 89° 32' 30" WEST ALONG THE CENTERLINE OF HARLAN ROAD, AS SHOWN ON TRACT MAP NO. 2529, BOOK 31 MAPS AND PLATS, PAGE 85, SAN JOAQUIN COUNTY RECORDS, WAS USED AS THE BASIS OF BEARINGS FOR THIS SURVEY.

### LEGEND

[R1] TRACT NO. 2529, 31 M&P 85  
BDM BRASS DISK MONUMENT  
C\*R# CALCULATED FROM REFERENCED RECORD

- ⊙ FOUND MONUMENT AS NOTED
- ⊗ SET NAIL WITH CROSS ON HEAD AND A 1.5" DIAMETER WASHER STAMPED "LS 7992 SURVEY CONTROL" IN ASPHALT

### CURVE TABLE

NO.	RADIUS	LENGTH	DELTA
C1	550.00'	21.26'	2° 12' 54"
C2	550.00'	21.26'	2° 12' 54"