

CORNER RECORD

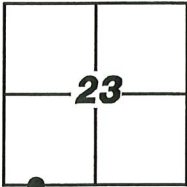
Agency Index: CR-19-108

Document Number: _____

City of LATHROP

County of SAN JOAQUIN, California

Brief Legal Description MONUMENT AT THE INTERSECTION OF LATHROP RD AND REV. MAURICE COTTON DR. LOCATED IN THE SOUTHWEST QUARTER OF SECTION 23. T.1S, R.6E M.D.B.&M.



T.1S, R.6E

CORNER TYPE

- Government Corner Control
 Meander Property
 Rancho Other

Date of Survey 7-16-2019

COORDINATES (Optional)

N. _____ E. _____

Elevation _____

Units Metric U.S. Survey Foot

Horizontal Datum _____

Zone _____ Epoch Date _____

Vertical Datum _____

Complies with Public Resources Code SS8801-8819

Complies with Public Resources Code SS8890-8902

PLS Act Ref: 8765(d) 8771 8773 Other:

Corner/
 Monument: Left as found Established Rebuilt Pre-Construction
 Found and Tagged Reestablished Referenced Post-Construction

Narrative of corner identified and monument as found, set, reset, replaced, or removed:

See sheet #2 for description(s):

FOUND 3/4" IRON ROD WAS REMOVED DURING CONSTRUCTION AND REPLACED WITH A MAG NAIL AND BRASS WASHER STAMPED "LS 6953", ALL AS SHOWN ON PAGE 2.

SURVEYOR'S STATEMENT

This Corner Record was prepared by me or under my direction in conformance with the Land Surveyors' Act on SEPTEMBER 9, 2019,

Signed [Signature] P.L.S. or ~~R.C.E.~~ Number 6953



COUNTY SURVEYOR'S STATEMENT

This Corner Record was received September 16, 2019

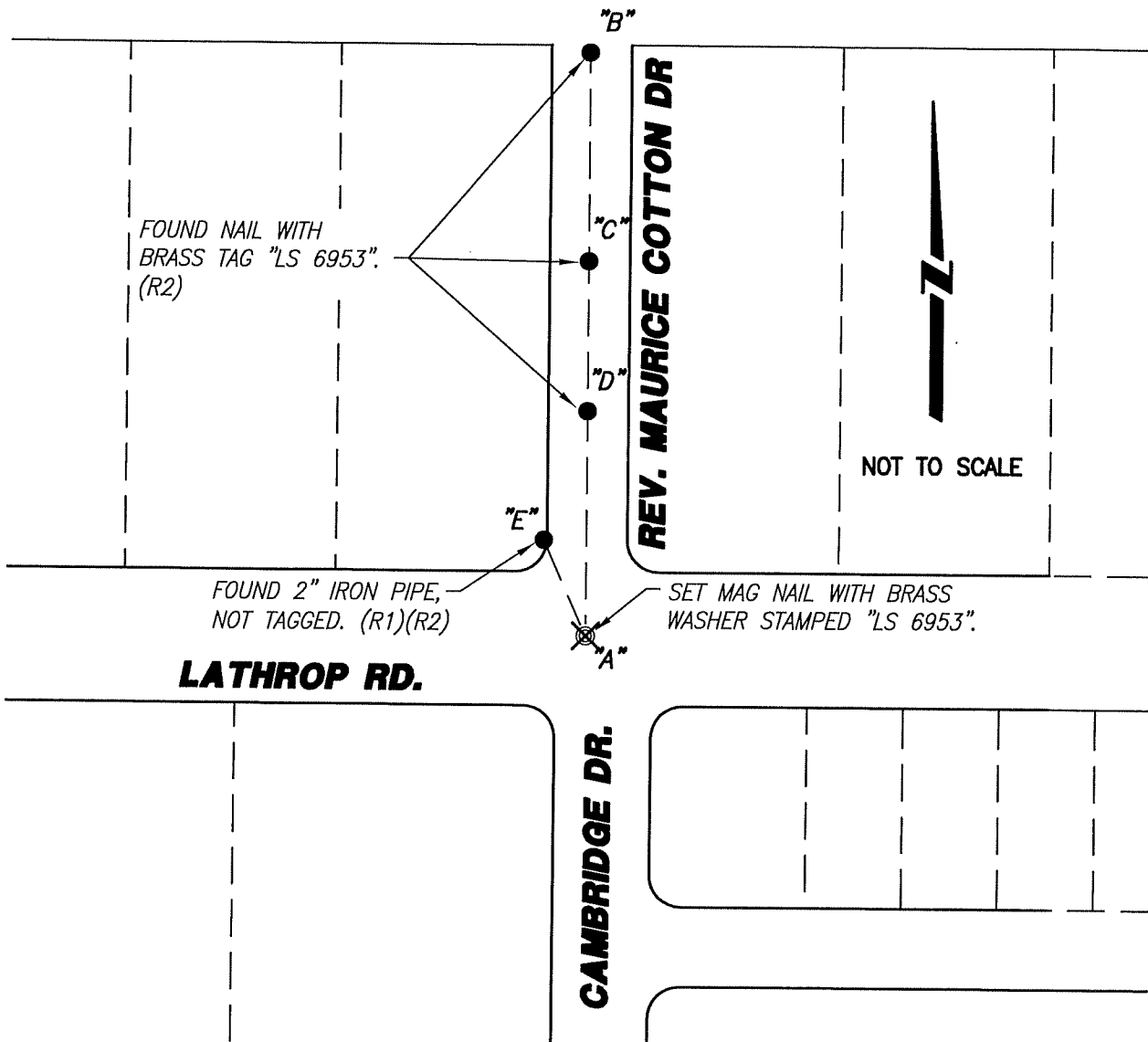
and examined and filed September 24, 2019.

Signed James E. Hart P.L.S. or ~~R.C.E.~~ No: 8657

Title County Surveyor



County Surveyor's Comment _____



REFERENCES:

- (R1) 11-M-136, S.J.C.R.
- (R2) CORNER RECORD CR-17-336, S.J.C.S.R.

LEGEND:

- ⊗ SET MONUMENT AS NOTED
- FOUND MONUMENT AS NOTED.
- M&P- MAPS & PLATS
- S.J.C.R. SAN JOAQUIN COUNTY RECORDS
- S.J.C.S.R. SAN JOAQUIN COUNTY SURVEYORS RECORDS
- (M) MEASURED DISTANCE. ALL DISTANCES ARE MEASURED UNLESS NOTED OTHERWISE.

X AND DISTANCE TABLE		
BS-@-FS	X	FS DISTANCE
B-A-B	00°00'00"	365.710'(M)(R2)
B-A-C	00°00'00"	234.855'(M)(R2)
B-A-D	00°00'00"	140.860'(M)(R2)
B-A-E	337°44'30"	65.665'(M)(R2)

NOTE:

THIS CORNER RECORD DOES NOT VERIFY THIS MONUMENT TO BE IN THE CORRECT POSITION.