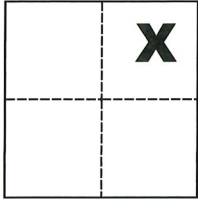


# CORNER RECORD

Agency Index CR-19-105  
Document Number \_\_\_\_\_

City of Manteca County of San Joaquin, California  
Brief Legal Description Northwest intersection of Main Street and Lupton Street.



### CORNER TYPE

Government Corner  Control   
Meander  Property   
Rancho  Other

Date of Survey August 2, 2019

### COORDINATES (Optional)

N. \_\_\_\_\_ E. \_\_\_\_\_  
Elevation \_\_\_\_\_  
Units Metric  U.S. Survey Foot   
Horizontal Datum \_\_\_\_\_  
Zone \_\_\_\_\_ Epoch Date \_\_\_\_\_  
Vertical Datum \_\_\_\_\_

Sec. 5, T.2S., R.7E.,  
M.D.B. & M.

Complies with Public Resources Code §§8801-8819  
 Complies with Public Resources Code §§8890-8902

PLS Act Ref.:  8765(d)  8771  8773  Other:  
Corner/  
Monument:  Left as found  Established  Rebuilt  Pre-Construction  
 Found and tagged  Reestablished  Referenced  Post-Construction

Narrative of corner identified and monument as found, set, reset, replaced, or removed:

See sheet #2 for description(s):

### SURVEYOR'S STATEMENT

This Corner Record was prepared by me or under my direction in conformance with

the Professional Land Surveyors' Act on Sept. 4, 2019

Signed Michael L. Quaranta P.L.S. or R.C.E. No. L.S. 4450



### COUNTY SURVEYOR'S STATEMENT

This Corner Record was received September 10, 2019

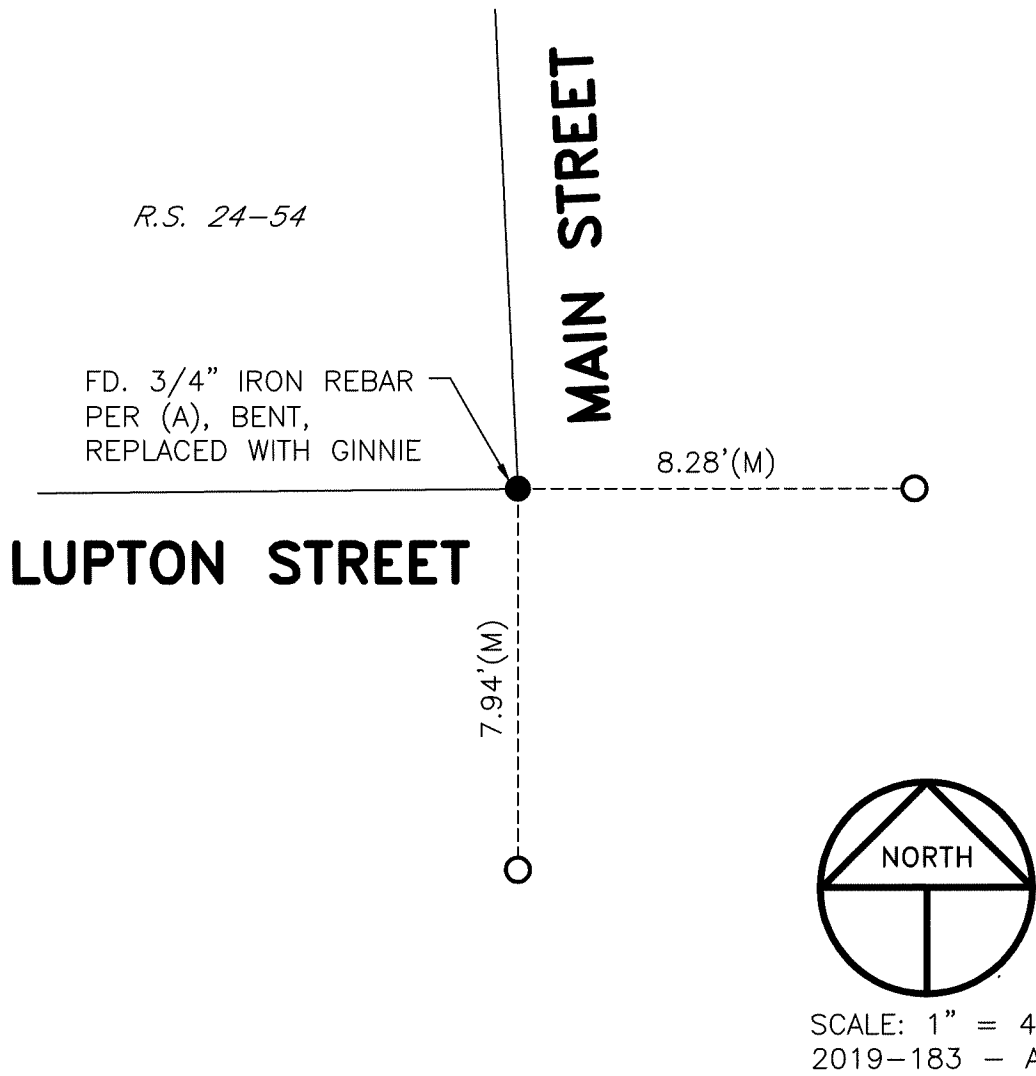
and examined and filed September 18, 2019

Signed James E. Hart P.L.S. or R.C.E. No. 8657

Title County Surveyor

County Surveyor's Comment





**REFERENCE**

(A) R.S. 24-54, S.J.C.R.

**LEGEND**

- INDICATES FOUND MONUMENT AS NOTED
- INDICATES SET MAG. NAIL AND ALUMINUM WASHER STAMPED LS 4450
- FD. INDICATES FOUND ON THIS SURVEY
- R.S. INDICATES RECORD OF SURVEY, BOOK AND PAGE, S.J.C.R.
- S.J.C.R. INDICATES SAN JOAQUIN COUNTY RECORDS
- (M) INDICATES MEASURED ON THIS SURVEY