

CORNER RECORD

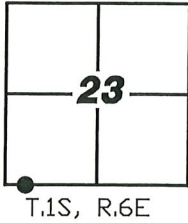
Agency Index: CR-19-102

Document Number: _____

City of LATHROP

County of SAN JOAQUIN, California

Brief Legal Description MONUMENTS AT THE INTERSECTION OF LATHROP RD AND AVON AVE.
LOCATED IN THE SOUTHWEST QUARTER OF SECTION 23. T.1S, R.6E M.D.B.&M.



CORNER TYPE

- Government Corner Control
 Meander Property
 Rancho Other

Date of Survey 7-16-2019

COORDINATES (Optional)

N. _____ E. _____
 Elevation _____
 Units Metric U.S. Survey Foot
 Horizontal Datum _____
 Zone _____ Epoch Date _____
 Vertical Datum _____
 Complies with Public Resources Code §§8801-8819
 Complies with Public Resources Code §§8890-8902

PLS Act Ref: 8765(d) 8771 8773 Other:

Corner/
 Monument: Left as found Established Rebuilt Pre-Construction
 Found and Tagged Reestablished Referenced Post-Construction

Narrative of corner identified and monument as found, set, reset, replaced, or removed:

See sheet #2 for description(s):

FOUND 3/4" IRON PIPE TAGGED "LS 4450" WAS REMOVED DURING CONSTRUCTION AND REPLACED WITH A
 3/4" IRON PIPE TAGGED "LS 6953"; A 2" IRON PIPE, NOT TAGGED, WAS REMOVED DURING CONSTRUCTION
 AND REPLACED WITH A NAIL AND BRASS TAG "LS 6953"; A 5/8" REBAR IN MONUMENT WELL WAS REMOVED
 DURING CONSTRUCTION AND REPLACED WITH A MAG NAIL AND BRASS WASHER STAMPED "LS 6953"; AND A
 1" IRON PIPE NOT TAGGED WAS REMOVED DURING CONSTRUCTION AND REPLACED WITH A MAG NAIL AND
 BRASS WASHER STAMPED "LS 6953". ALL AS SHOWN ON PAGE 2.

SURVEYOR'S STATEMENT

This Corner Record was prepared by me or under my direction in conformance with

the Land Surveyors' Act on AUGUST 20, 2019,

Signed [Signature] P.L.S. or R.O.E. Number 6953



COUNTY SURVEYOR'S STATEMENT

This Corner Record was received August 21, 2019

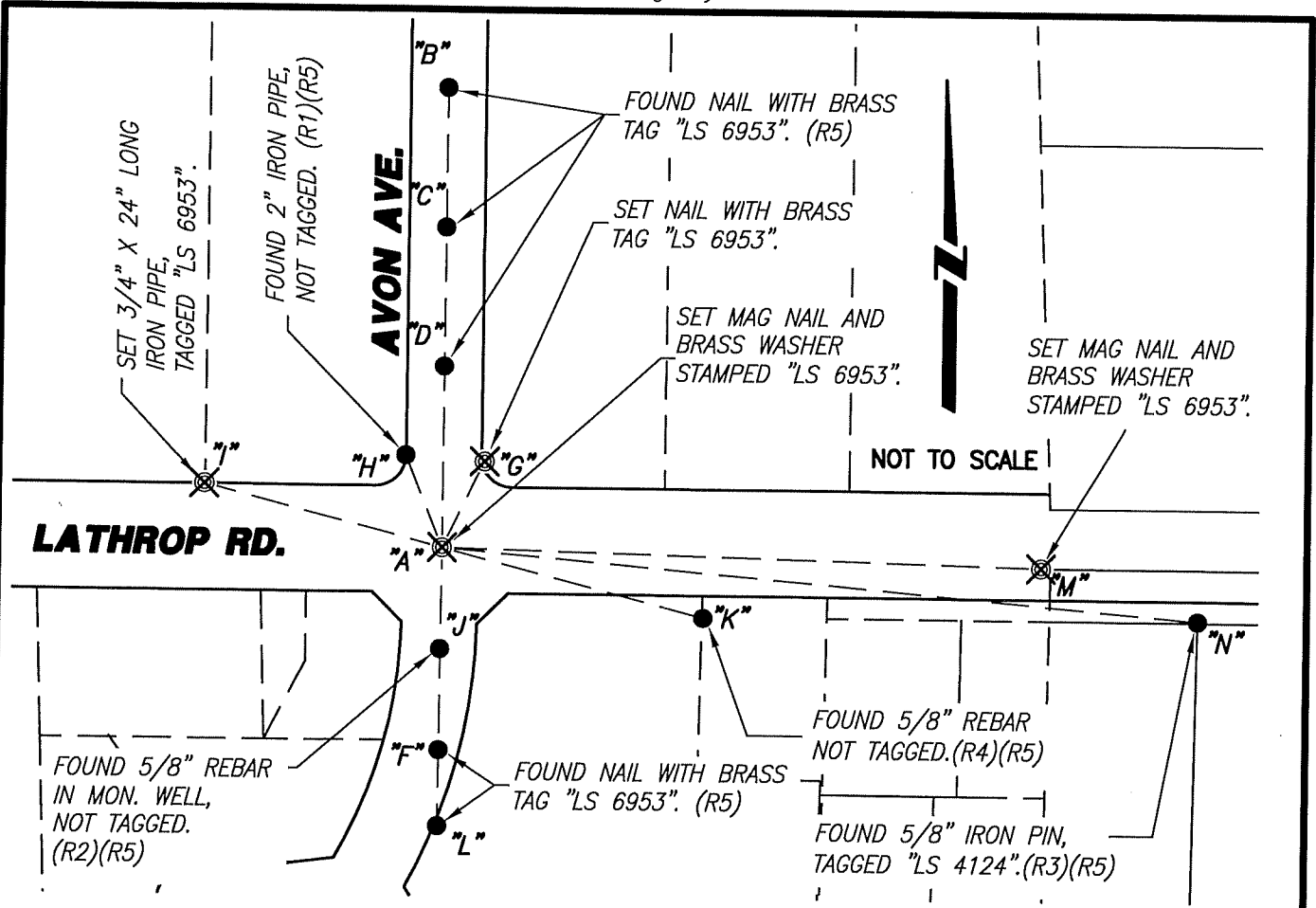
and examined and filed September 4, 2019

Signed [Signature] P.L.S. or R.O.E. No: 8657

Title County Surveyor



County Surveyor's Comment _____



REFERENCES:

- (R1) 11-M&P-136, S.J.C.R.
- (R2) 17-PM-151, S.J.C.R.
- (R3) 29-M&P-64, S.J.C.R.
- (R4) 11-PM-61, S.J.C.R.
- (R5) CORNER RECORD CR-17-333, S.J.C.S.R.

LEGEND:

- ⊗ SET MONUMENT AS NOTED.
- FOUND MONUMENT AS NOTED.
- M&P- MAPS & PLATS
- PM- PARCEL MAPS
- CR CORNER RECORD
- S.J.C.R. SAN JOAQUIN COUNTY RECORDS
- S.J.C.S.R. SAN JOAQUIN COUNTY SURVEYORS RECORDS
- (M) MEASURED DISTANCE. ALL DISTANCES ARE MEASURED UNLESS NOTED OTHERWISE.

BS-@-FS	☒	FS DISTANCE
B-A-B	00°00'00"	387.620'(M)(R5)
B-A-C	00°00'00"	303.085'(M)(R5)
B-A-D	00°00'00"	211.100'(M)(R5)
B-A-F	180°06'58"	133.570'(M)(R5)
B-A-G	22°30'50"	63.305'(M)(R5)
B-A-H	337°38'13"	65.355'(M)(R5)
B-A-I	284°26'48"	162.040'(M)(R5)
B-A-J	180°06'58"	64.410'(M)(R5)
B-A-K	104°25'54"	178.685'(M)(R5)
B-A-L	180°06'58"	183.775'(M)(R5)
B-A-M	91°26'29"	394.720'(M)(R5)
B-A-N	95°04'00"	499.805'(M)(R5)

NOTE:

THIS CORNER RECORD DOES NOT VERIFY THIS MONUMENT TO BE IN THE CORRECT POSITION.