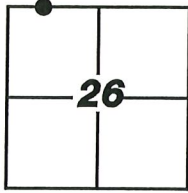


CORNER RECORD

Agency Index: CR-19-100
Document Number: _____
County of SAN JOAQUIN, California

City of LATHROP

Brief Legal Description MONUMENT AT THE INTERSECTION OF LATHROP RD AND CAMBRIDGE DR.
LOCATED IN THE NORTHWEST QUARTER OF SECTION 26. T.1S, R.6E M.D.B.&M.



T.1S, R.6E

CORNER TYPE

- Government Corner
- Meander
- Rancho
- Control
- Property
- Other

Date of Survey 7-16-19

COORDINATES (Optional)

N. _____ E. _____
 Elevation _____
 Units Metric U.S. Survey Foot
 Horizontal Datum _____
 Zone _____ Epoch Date _____
 Vertical Datum _____
 Complies with Public Resources Code SS8801-8819
 Complies with Public Resources Code SS8890-8902

PLS Act Ref: 8765(d) 8771 8773 Other:

Corner/
Monument: Left as found Established Rebuilt Pre-Construction
 Found and Tagged Reestablished Referenced Post-Construction

Narrative of corner identified and monument as found, set, reset, replaced, or removed:
 See sheet #2 for description(s):

FOUND 5/8" REBAR NOT TAGGED WAS REMOVED DURING CONSTRUCTION AND REPLACED WITH A MAG NAIL AND BRASS WASHER STAMPED "LS6953", ALL AS SHOWN ON PAGE 2.

SURVEYOR'S STATEMENT

This Corner Record was prepared by me or under my direction in conformance with the Land Surveyors' Act on AUGUST 20, 2019,
 Signed [Signature] P.L.S. or R.C.E. Number 6953

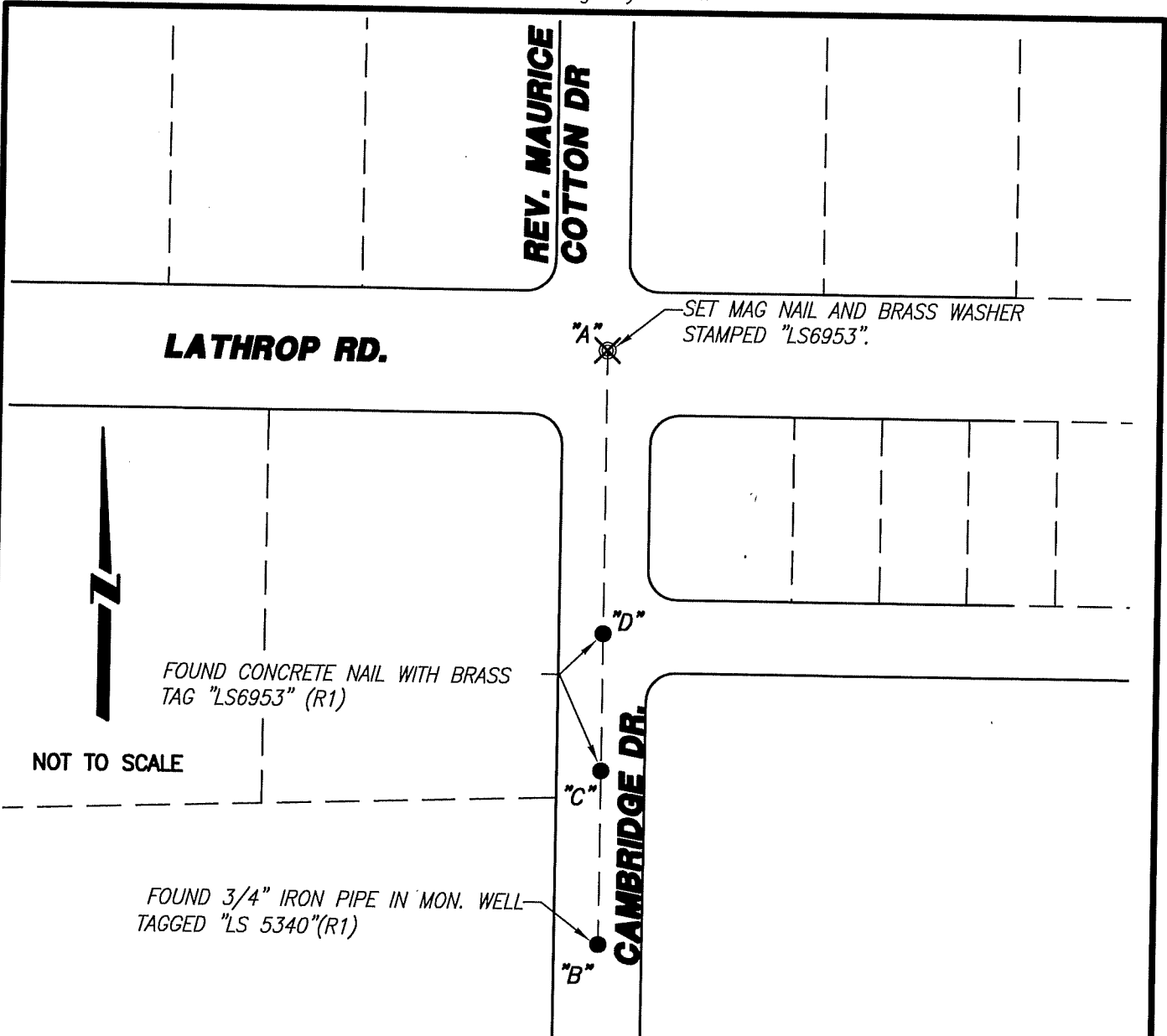


COUNTY SURVEYOR'S STATEMENT

This Corner Record was received August 21, 2019
 and examined and filed September 4, 2019
 Signed James E. Hart P.L.S. or R.C.E. No: 8657
 Title County Surveyor



County Surveyor's Comment _____



REFERENCE:

(R1) CORNER RECORD, CR-17-335, S.J.C.S.R.

LEGEND:

- ⊗ SET MAG NAIL WITH BRASS WASHER STAMPED "L.S. 6953".
- FOUND MONUMENT AS NOTED.
- S.J.C.R SAN JOAQUIN COUNTY RECORDS
- S.J.C.S.R. SAN JOAQUIN COUNTY SURVEYOR'S RECORDS
- (M) MEASURED DISTANCE. ALL DISTANCES ARE MEASURED UNLESS NOTED OTHERWISE.

X AND DISTANCE TABLE		
BS-@-FS	X	FS DISTANCE
B-A-B	00°00'00"	405.950'(M)(R1)
B-A-C	00°00'00"	287.160'(M)(R1)
B-A-D	00°00'00"	193.325'(M)(R1)

NOTE:

THIS CORNER RECORD DOES NOT VERIFY THIS MONUMENT TO BE IN THE CORRECT POSITION.