

CORNER RECORD

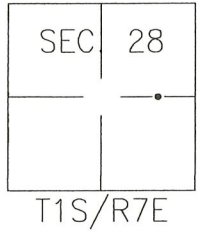
Agency Index CR-19-99

Document Number _____

City of _____

County of SAN JOAQUIN, California

Brief Legal Description CENTERLINE LINE MONUMENT AT SOUTHLAND AND MITCHELL ROADS



CORNER TYPE

- Government Corner Control
 Meander Property
 Rancho Other

Date of Survey 2019-03-27

COORDINATES (Optional)

- N. _____ E. _____
 Elevation _____
 Units Metric U.S. Survey Foot
 Horizontal Datum _____
 Zone _____ Epoch Date _____
 Vertical Datum: _____
 Complies with Public Resources Code §§8801-8819
 Complies with Public Resources Code §§8890-8902

PLS Act Ref.: 8765(d) 8771 8773 Other: _____

Corner/Monument: Left as found Established Rebuilt Pre-Construction
 Found and tagged Reestablished Referenced Post-Construction

Narrative of corner identified and monument as found, set, reset, replaced, or removed:
 See sheet #2 for description(s):

SURVEYOR'S STATEMENT

This Corner Record was prepared by me or under my direction in conformance with

the Professional Land Surveyor's Act on July 25th, 2019.

Signed [Signature] P.L.S. or R.C.E. No.: 8366



COUNTY SURVEYOR'S STATEMENT

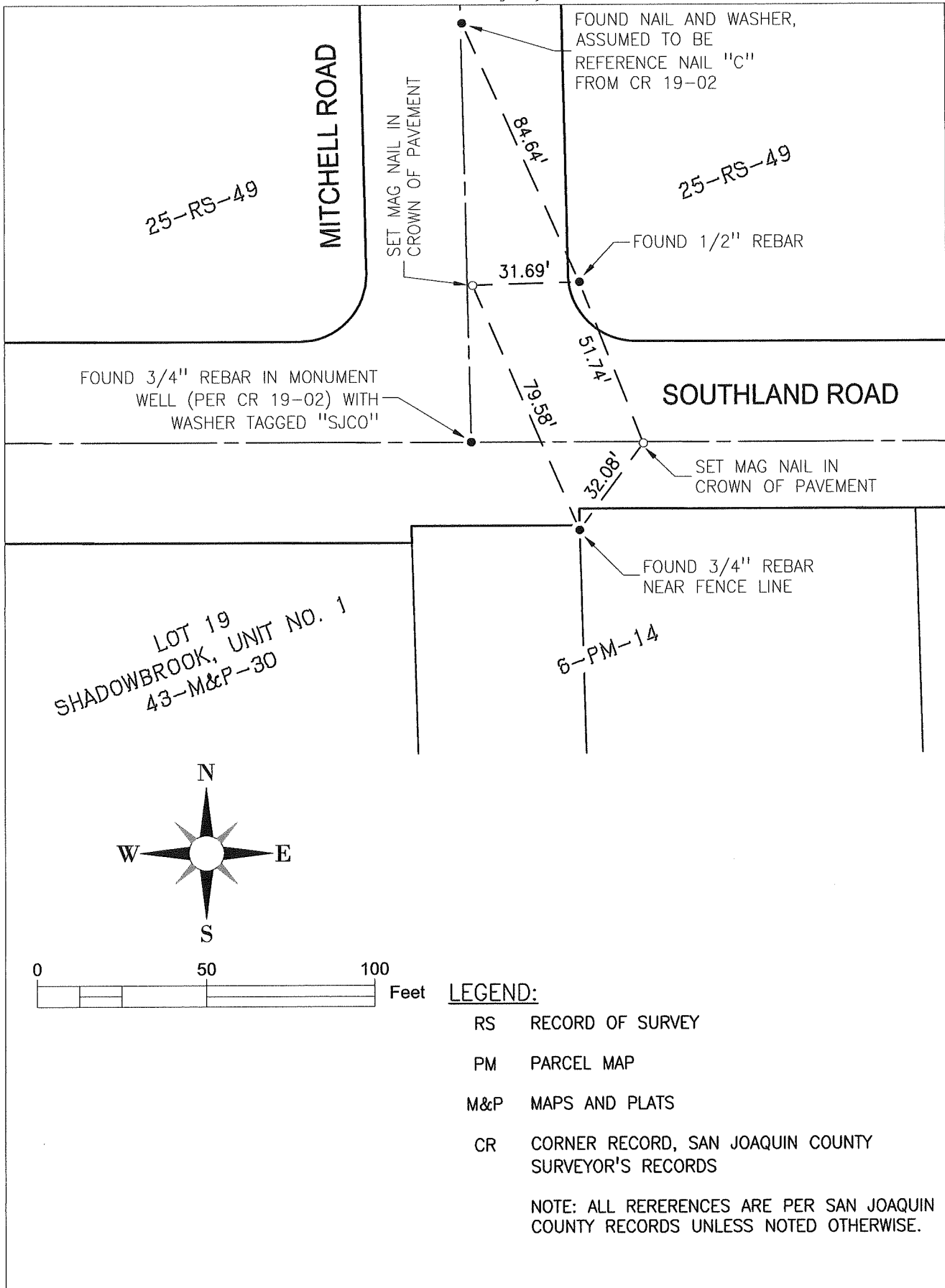
This Corner Record was received August 5, 2019 and examined
 and filed August 27, 2019.

Signed James E. Hart P.L.S. or R.C.E. No.: 8657

Title County Surveyor

County Surveyor's Comment _____





LEGEND:

- RS RECORD OF SURVEY
- PM PARCEL MAP
- M&P MAPS AND PLATS
- CR CORNER RECORD, SAN JOAQUIN COUNTY SURVEYOR'S RECORDS

NOTE: ALL RERERENCES ARE PER SAN JOAQUIN COUNTY RECORDS UNLESS NOTED OTHERWISE.