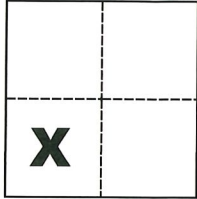


CORNER RECORD

Agency Index CR-19-97

Document Number _____

City of _____ County of San Joaquin, CaliforniaBrief Legal Description NE Cor. of Parcel One, SW Cor. of Parcel Two and NW Cor. of Parcel Four per R.S. 24-39, S.J.C.R.**CORNER TYPE****COORDINATES (Optional)**
 Government Corner Control
 Meander Property
 Rancho Other

N. _____ E. _____

Elevation _____

Units Metric U.S. Survey Foot

Horizontal Datum _____

Zone _____ Epoch Date _____

Date of Survey June 21, 2019

Vertical Datum _____

 Complies with Public Resources Code §§8801-8819 Complies with Public Resources Code §§8890-8902Sec. 26, T.3N., R.6E.,
M.D.B. & M.
 PLS Act Ref.: 8765(d) 8771 8773 Other:
 Corner/
 Monument: Left as found Established Rebuilt Pre-Construction
 Found and tagged Reestablished Referenced Post-Construction

Narrative of corner identified and monument as found, set, reset, replaced, or removed:

 See sheet #2 for description(s):**SURVEYOR'S STATEMENT**

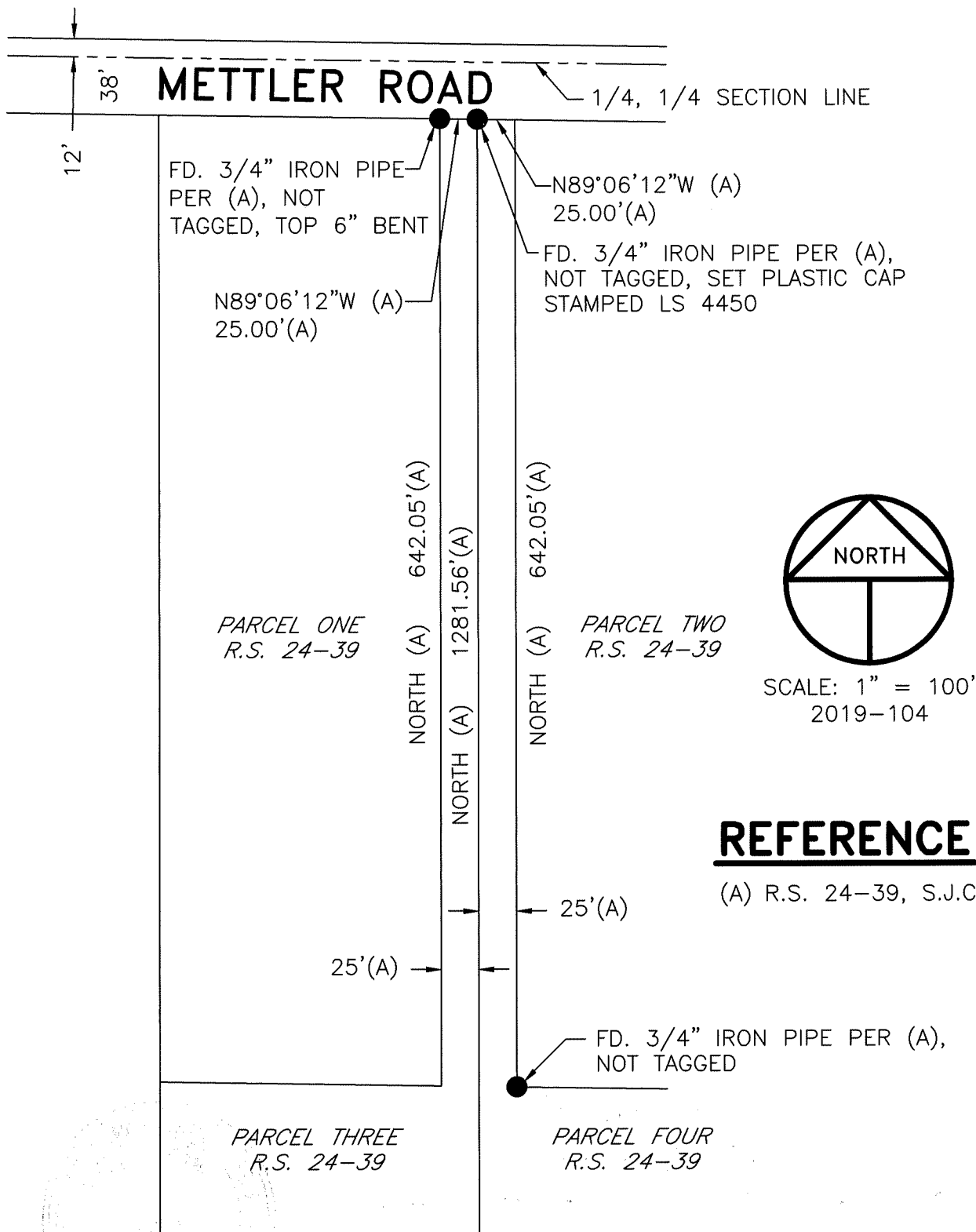
This Corner Record was prepared by me or under my direction in conformance with

the Professional Land Surveyors' Act on

Signed Michael L. Quaranta July 24, 2019 P.L.S. or R.C.E. No. L.S. 4450**COUNTY SURVEYOR'S STATEMENT**This Corner Record was received July 29, 2019and examined and filed August 19, 2019Signed James E. Hart P.L.S. or R.C.E. No. 8657Title County Surveyor

County Surveyor's Comment _____





REFERENCE

(A) R.S. 24-39, S.J.C.R.

LEGEND

- — INDICATES FOUND MONUMENT, AS NOTED
- FD. INDICATES FOUND ON THIS SURVEY
- R.S. INDICATES RECORD OF SURVEY, BOOK AND PAGE, S.J.C.R.
- S.J.C.R. INDICATES SAN JOAQUIN COUNTY RECORDS