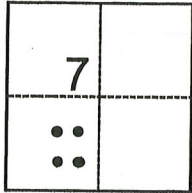


CORNER RECORD

Agency Index CR-19-95
Document Number _____

City of _____ County of San Joaquin, California
Brief Legal Description _____ A.P.N. 085-210-36



CORNER TYPE

- Government Corner
- Meander
- Rancho
- Control
- Property
- Other

Date of Survey June 19, 2019

COORDINATES (Optional)

N. _____ E. _____

Elevation _____

Units Metric U.S. Survey Foot

Horizontal Datum _____

Zone _____ Epoch Date _____

Vertical Datum _____

Complies with Public Resources Code §§8801-8819

Complies with Public Resources Code §§8890-8902

T.2N., R.7E., M.D.B.M.

- PLS Act Ref.: 8765(d) 8771 8773 Other:
- Corner/Monument: Left as found Established Rebuilt Pre-Construction
- Found and tagged Reestablished Referenced Post-Construction

Narrative of corner identified and monument as found, set, reset, replaced, or removed:

See sheet #2 for description(s):

SURVEYOR'S STATEMENT

This Corner Record was prepared by me or under my direction in conformance with

the Professional Land Surveyors' Act on June 27, 2019

Signed [Signature] P.L.S. or R.C.E. No. 25835



COUNTY SURVEYOR'S STATEMENT

This Corner Record was received August 6, 2019

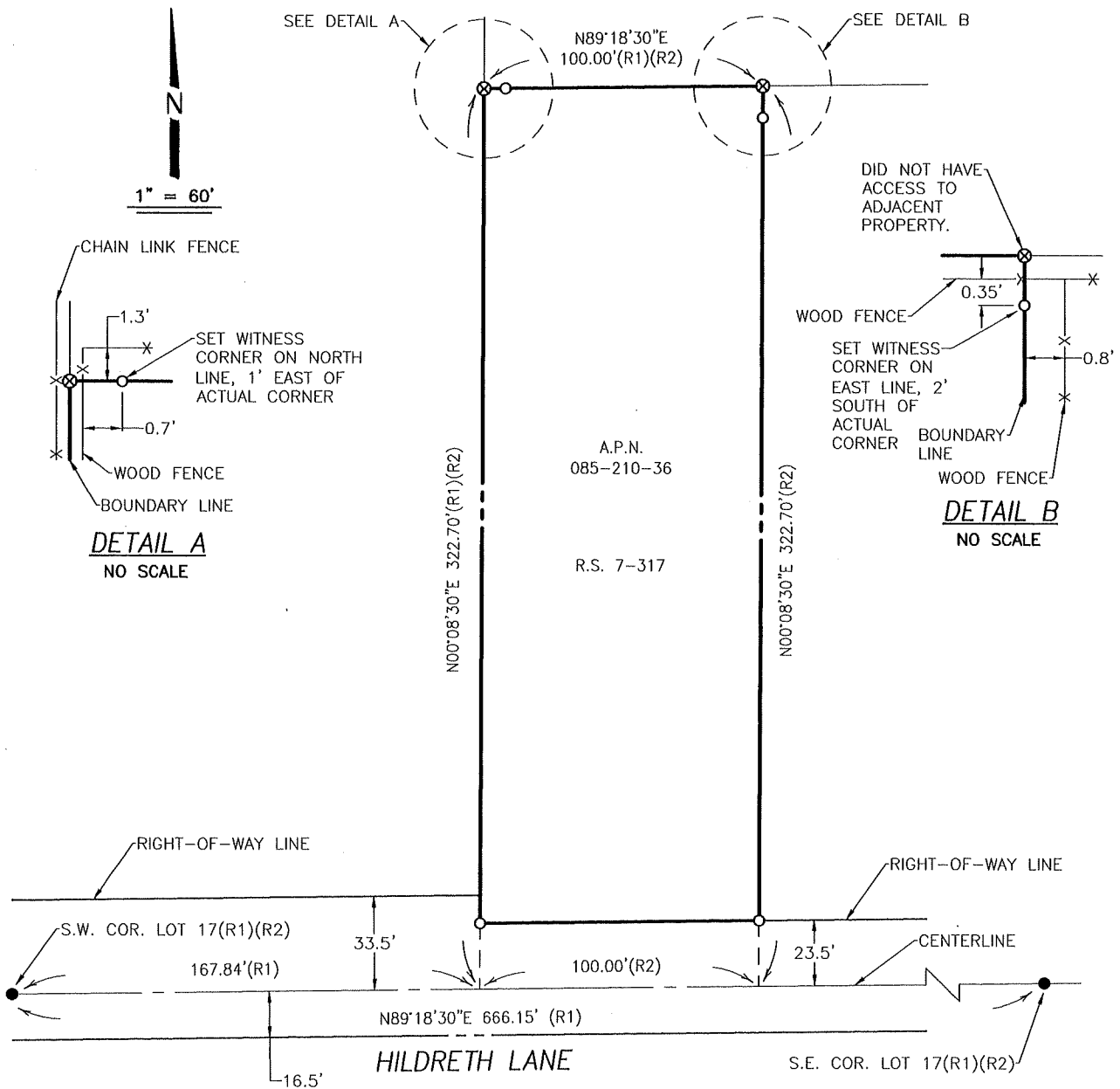
and examined and filed August 7, 2019

Signed James E. Hart P.L.S. or R.C.E. No. 8657

Title County Surveyor

County Surveyor's Comment





LEGEND

- A.P.N. ASSESSOR PARCEL NUMBER
- S.J.C.R. SAN JOAQUIN COUNTY RECORDS
- R.S. RECORD OF SURVEY, S.J.C.R.
- M&P MAPS AND PLATS, S.J.C.R.
- FD. FOUND
- FOUND BOLT AND WASHER(R1)(R2)
- SET 3/4"x30" IRON ROD, TAGGED
- ⊗ R.C.E. 25835
- ⊗ DIMENSION POINT

REFERENCES

- (R1) M&P 29-5
- (R2) R.S. 7-317

DILLON & MURPHY

CONSULTING CIVIL ENGINEERS
 ENGINEERING • PLANNING • SURVEYING
 847 N. CLUFF AVENUE, SUITE A2, LODI, CALIFORNIA 95240 (209) 334-6613

1977

S:\2019\1977\PLAT.dwg Aug 06, 2019