

CORNER RECORD

Agency Index CR-19-94

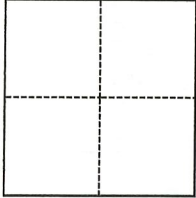
Document Number _____

City of MANTECA County of SAN JOAQUIN, California

Brief Legal Description SURVEYED REMAINDER PER P.M. 16-78, S.J.C.R.

CORNER TYPE

COORDINATES (Optional)



- Government Corner
- Meander
- Rancho
- Control
- Property
- Other

N. _____ E. _____

Elevation _____

Units Metric U.S. Survey Foot

Horizontal Datum _____

Zone _____ Epoch Date _____

Vertical Datum _____

Complies with Public Resources Code §§8801-8819

Complies with Public Resources Code §§8890-8902

PLS Act Ref.: 8765(d) 8771 8773 Other:

Corner/Monument: Left as found Established Rebuilt Pre-Construction

Found and tagged Reestablished Referenced Post-Construction

Narrative of corner identified and monument as found, set, reset, replaced, or removed:

See sheet #2 for description(s):

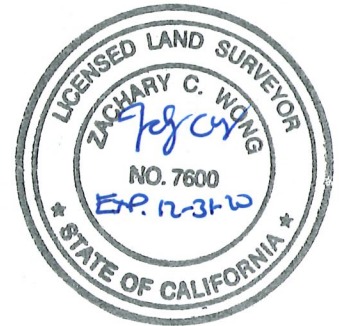
PRE-CONSTRUCTION CORNER RECORD. THIS DOCUMENT IS FOR THE PURPOSE OF PRESERVING AND ESTABLISHING TIES TO EXISTING MONUMENTS OF "SURVEYED REMAINDER" AS SHOWN ON BOOK 16 OF PARCEL MAPS, PAGE 78, SAN JOAQUIN COUNTY RECORDS.

SURVEYOR'S STATEMENT

This Corner Record was prepared by me or under my direction in conformance with

the Professional Land Surveyors' Act on July 16, 2019

Signed [Signature] P.L.S. or R.C.E. No. 7600



COUNTY SURVEYOR'S STATEMENT

This Corner Record was received July 23, 2019

and examined and filed August 5, 2019

Signed [Signature] P.L.S. or R.C.E. No. 8657

Title County Surveyor

County Surveyor's Comment



LEGEND:

- B.O.B. BASIS OF BEARINGS
- DOC. DOCUMENT
- I. IRON
- (M) MEASURED
- M&P MAPS & PLATS, BOOK-PAGE
- P.M. PARCEL MAP, BOOK-PAGE
- ⊙ FOUND 3/4" I.PIPE TAGGED L.S. 3383
IN MONUMENT BOX (C)
- FOUND 3/4" I.PIPE TAGGED R.C.E. 22918 (A)
- ▲ FOUND 3/4" I.PIN (B), NO TAG

DESCRIPTION:

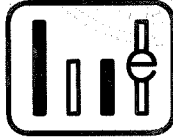
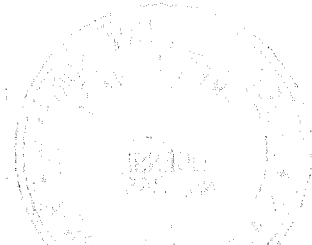
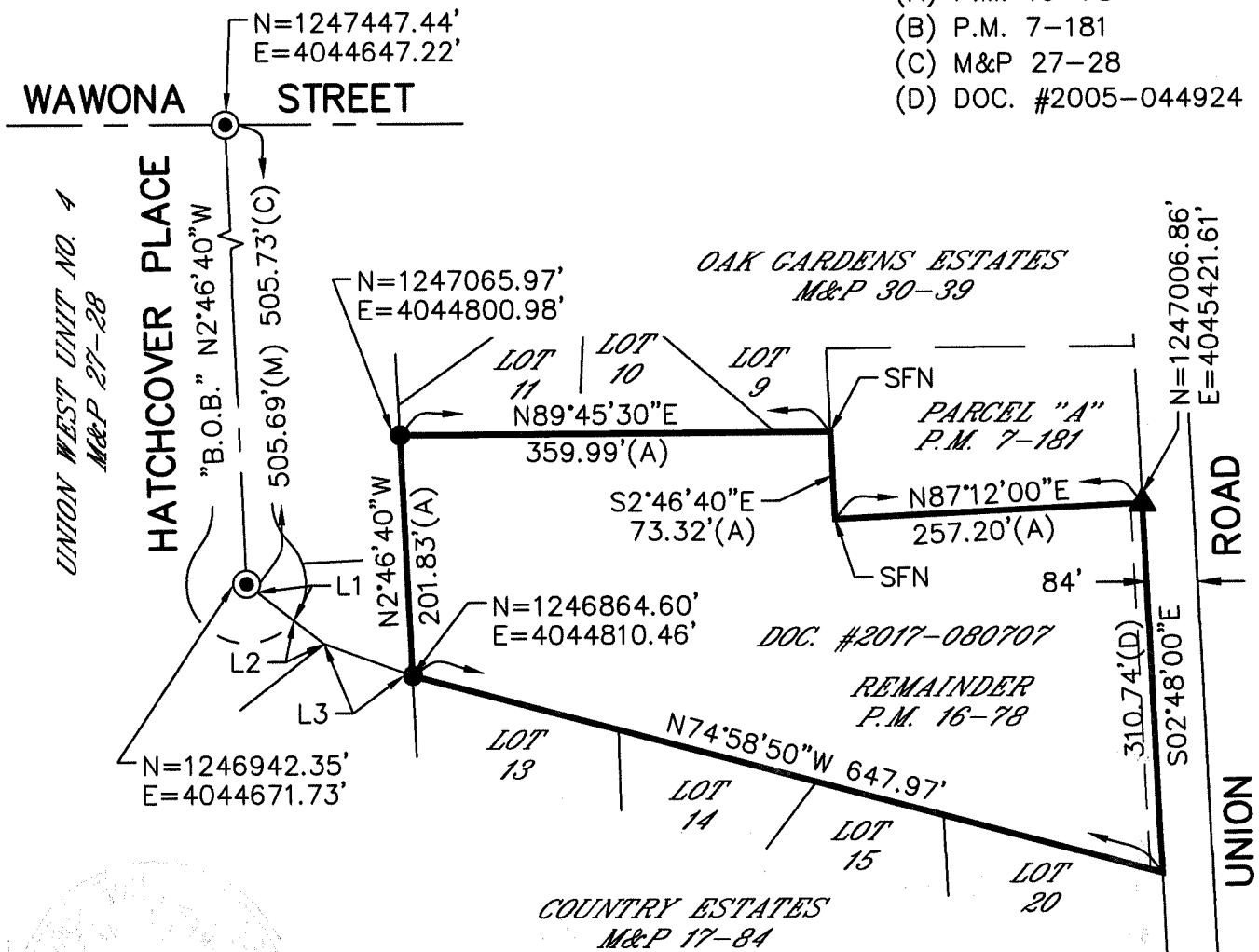
THIS DOCUMENT IS FOR THE PURPOSE OF PRESERVING AND ESTABLISHING TIES TO EXISTING MONUMENTS.

LINE TABLE PER (C)		
	BEARING	DISTANCE
L1	S51°59'55"E	50.00'
L2	S51°59'55"E	32.44'
L3	S70°01'00"E	78.70'

ALL REFERENCES ARE SAN JOAQUIN COUNTY RECORDS.

REFERENCES:

- (A) P.M. 16-78
- (B) P.M. 7-181
- (C) M&P 27-28
- (D) DOC. #2005-044924



WONG ENGINEERS, INC.
 PLANNING ENGINEERING SURVEYING
 4578 FEATHER RIVER DRIVE, SUITE A
 STOCKTON, CALIFORNIA (209) 476-0011
 JULY 16, 2019

