

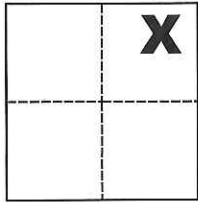
CORNER RECORD

Agency Index CR-19-90

Document Number _____

City of Stockton County of San Joaquin, California

Brief Legal Description Ely lot cor. common to Lots 314 and 315 and Wly lot cor. common to Lots 312 and 313 per M.&P. 25-99, S.J.C.R.



CORNER TYPE

- Government Corner Control
- Meander Property
- Rancho Other

Date of Survey June 18, 2019

COORDINATES (Optional)

N. _____ E. _____

Elevation _____

Units Metric U.S. Survey Foot

Horizontal Datum _____

Zone _____ Epoch Date _____

Vertical Datum _____

- Complies with Public Resources Code §§8801-8819
- Complies with Public Resources Code §§8890-8902

Sec. 7, T.2N., R.6E.,
M.D.B. & M.

PLS Act Ref.: 8765(d) 8771 8773 Other:

Corner/Monument: Left as found Established Rebuilt Pre-Construction

Found and tagged Reestablished Referenced Post-Construction

Narrative of corner identified and monument as found, set, reset, replaced, or removed:

See sheet #2 for description(s):

SURVEYOR'S STATEMENT

This Corner Record was prepared by me or under my direction in conformance with the Professional Land Surveyors' Act on July 5, 2019.

Signed Michael L. Quarantoni P.L.S. or R.C.E. No. L.S. 4450



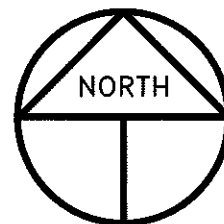
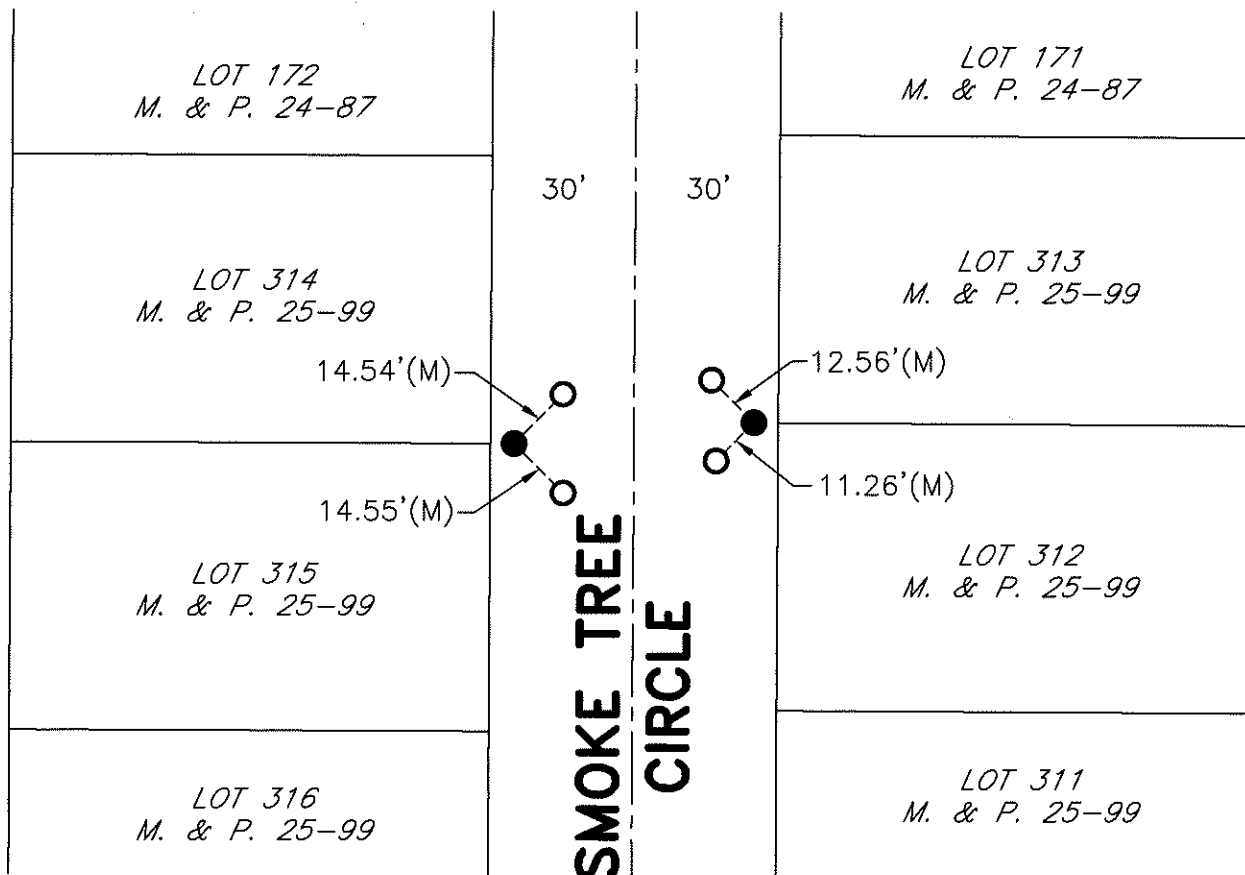
COUNTY SURVEYOR'S STATEMENT

This Corner Record was received July 12, 2019 and examined and filed July 23, 2019.

Signed James E. Hart P.L.S. or R.C.E. No. 8657
Title County Surveyor

County Surveyor's Comment _____





SCALE: 1" = 40'
2019-149

LEGEND

- INDICATES FOUND CHISELED CROSS, NO REFERENCE, CHISELED CROSS IS VERY LARGE AND CRUDE, EXISTING SIDEWALK IS VERY ERODED
- INDICATES SET CONCRETE NAIL AND TAG STAMPED LS 4450
- M. & P. INDICATES MAPS AND PLATS, VOLUME AND PAGE, S.J.C.R.
- S.J.C.R. INDICATES SAN JOAQUIN COUNTY RECORDS
- (M) INDICATES MEASURED ON THIS SURVEY