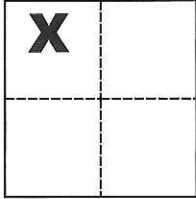


CORNER RECORD

Agency Index CR-19-88

Document Number _____

City of Manteca County of San Joaquin, CaliforniaBrief Legal Description SE corner of the intersection of Yosemite Ave. and Sherman Ave.**CORNER TYPE****COORDINATES (Optional)**

Government Corner Control

Meander Property

Rancho Other

N. _____ E. _____

Elevation _____

Units Metric U.S. Survey Foot

Horizontal Datum _____

Zone _____ Epoch Date _____

Date of Survey June 11, 2019

Vertical Datum _____

 Complies with Public Resources Code §§8801-8819 Complies with Public Resources Code §§8890-8902Sec. 4, T.2S., R.7E.,
M.D.B. & M.PLS Act Ref.: 8765(d) 8771 8773 Other:Corner/Monument: Left as found Established Rebuilt Pre-Construction Found and tagged Reestablished Referenced Post-Construction

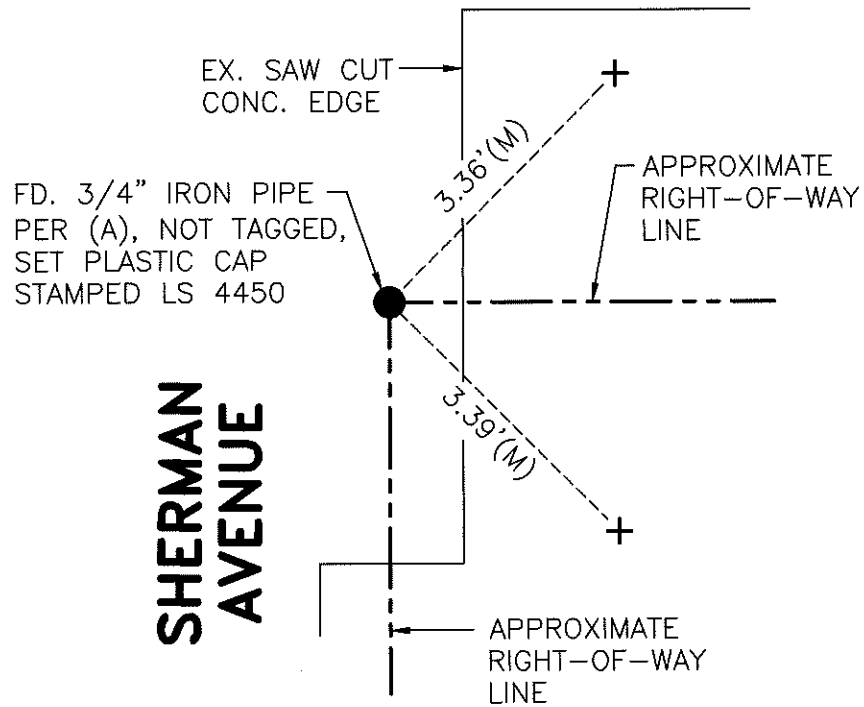
Narrative of corner identified and monument as found, set, reset, replaced, or removed:

 See sheet #2 for description(s):**SURVEYOR'S STATEMENT**

This Corner Record was prepared by me or under my direction in conformance with

the Professional Land Surveyors' Act on July 5, 2019Signed Michael L. Quartaroli P.L.S. or R.C.E. No. L.S. 4450**COUNTY SURVEYOR'S STATEMENT**This Corner Record was received July 12, 2019and examined and filed July 23, 2019Signed James E. Hart P.L.S. or R.C.E. No. 8657Title County Surveyor**County Surveyor's Comment**

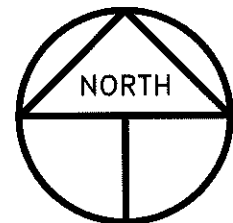
YOSEMITE AVENUE



F.B. 154-20

REFERENCE

(A) F.B. 154-20, S.J.C.S.R.



SCALE: 1" = 2'
2019-142 - B

LEGEND

- + INDICATES SET SCOUR MARK. URGENCY OF REFERENCING THE MONUMENT PREVENTED SETTING TAGGED REFERENCE MONUMENTS PER 8772
- FD. INDICATES FOUND ON THIS SURVEY
- (M) INDICATES MEASURED ON THIS SURVEY
- F.B. INDICATES SAN JOAQUIN COUNTY FIELD BOOK, S.J.C.S.R.
- S.J.C.S.R. INDICATES SAN JOAQUIN COUNTY SURVEYOR'S RECORDS