

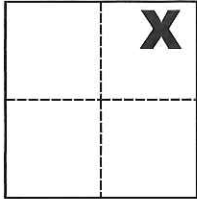
CORNER RECORD

Agency Index CR-19-86
Document Number _____

City of Manteca County of San Joaquin, California
Brief Legal Description Southerly corner of the 1.113± Ac. parcel per R.S. 28-144, S.J.C.R.

CORNER TYPE

COORDINATES (Optional)



Government Corner Control
Meander Property
Rancho Other

N. _____ E. _____
Elevation _____
Units Metric U.S. Survey Foot
Horizontal Datum _____
Zone _____ Epoch Date _____
Vertical Datum _____

Date of Survey June 17, 2019

Sec. 5, T.2S., R.7E.,
M.D.B. & M.

Complies with Public Resources Code §§8801-8819
 Complies with Public Resources Code §§8890-8902

PLS Act Ref.: 8765(d) 8771 8773 Other:
Corner/Monument: Left as found Established Rebuilt Pre-Construction
 Found and tagged Reestablished Referenced Post-Construction

Narrative of corner identified and monument as found, set, reset, replaced, or removed:
 See sheet #2 for description(s):

SURVEYOR'S STATEMENT

This Corner Record was prepared by me or under my direction in conformance with
the Professional Land Surveyors' Act on July 5, 2019
Signed Michael L. Quarles P.L.S. or R.C.E. No. L.S. 4450

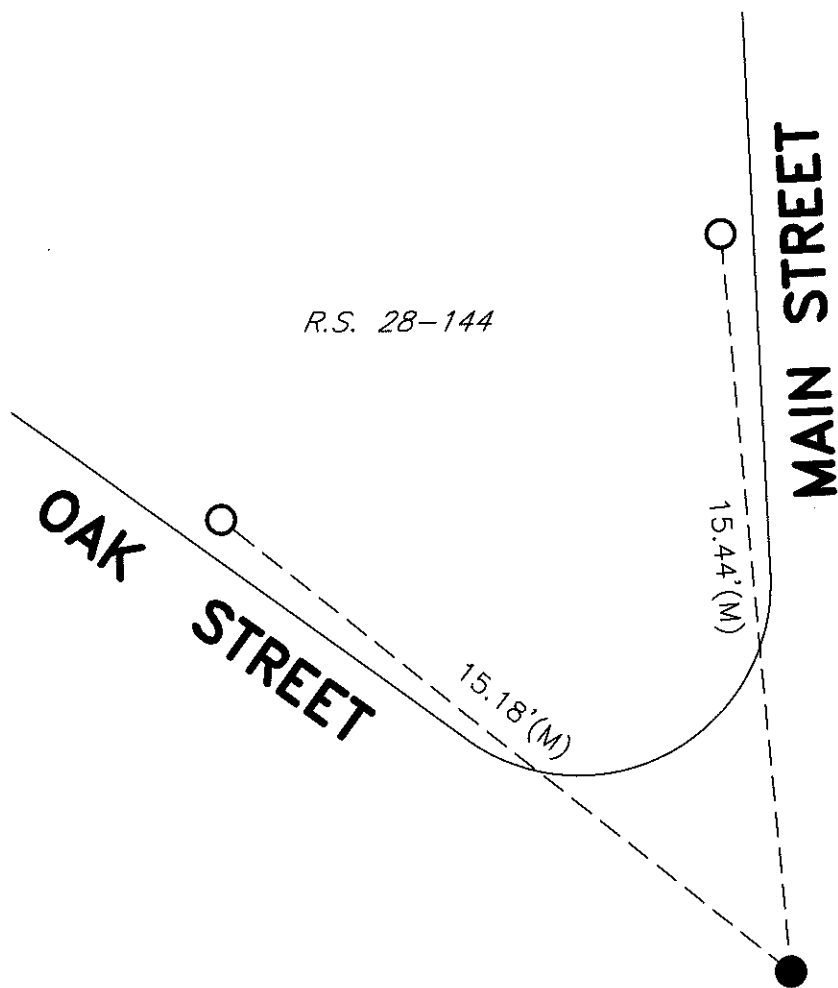


COUNTY SURVEYOR'S STATEMENT

This Corner Record was received July 12, 2019
and examined and filed July 23, 2019
Signed James E. Hart P.L.S. or R.C.E. No. 8657
Title County Surveyor

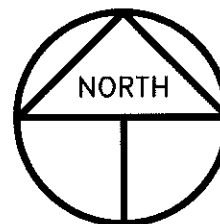
County Surveyor's Comment





REFERENCE

(A) R.S. 28-144, S.J.C.R.



SCALE: 1" = 4'
2019-148

LEGEND

- INDICATES FOUND 3/4" X 24" HEX HEAD BOLT W/PUNCH STAMPED RCE 25392 PER (A), BENT, REPLACED WITH 5/8" X 24" REBAR W/PLASTIC CAP STAMPED LS 4450
- INDICATES SET CONCRETE NAIL AND TAG STAMPED LS 4450
- (M) INDICATES MEASURED ON THIS SURVEY
- R.S. INDICATES RECORD OF SURVEY, BOOK AND PAGE, S.J.C.R.
- S.J.C.R. INDICATES SAN JOAQUIN COUNTY RECORDS