

CORNER RECORD

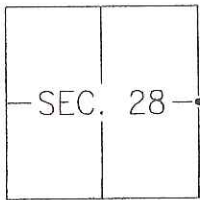
Agency Index CR-19-84

Document Number _____

City of STOCKTON

County of SAN JOAQUIN, California

Brief Legal Description MONUMENTS AT INTERSECTION OF NEWCASTLE AND ARCH ROADS



CORNER TYPE

- Government Corner Control
 Meander Property
 Rancho Other

Date of Survey 2019-04-19

COORDINATES (Optional)

- N. _____ E. _____
 Elevation _____
 Units Metric U.S. Survey Foot
 Horizontal Datum _____
 Zone _____ Epoch Date _____
 Vertical Datum: _____
 Complies with Public Resources Code §§8801-8819
 Complies with Public Resources Code §§8890-8902

PLS Act Ref.: 8765(d) 8771 8773 Other: _____

Corner/Monument: Left as found Established Rebuilt Pre-Construction
 Found and tagged Reestablished Referenced Post-Construction

Narrative of corner identified and monument as found, set, reset, replaced, or removed:
 See sheet #2 for description(s):

SURVEYOR'S STATEMENT

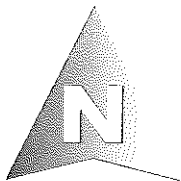
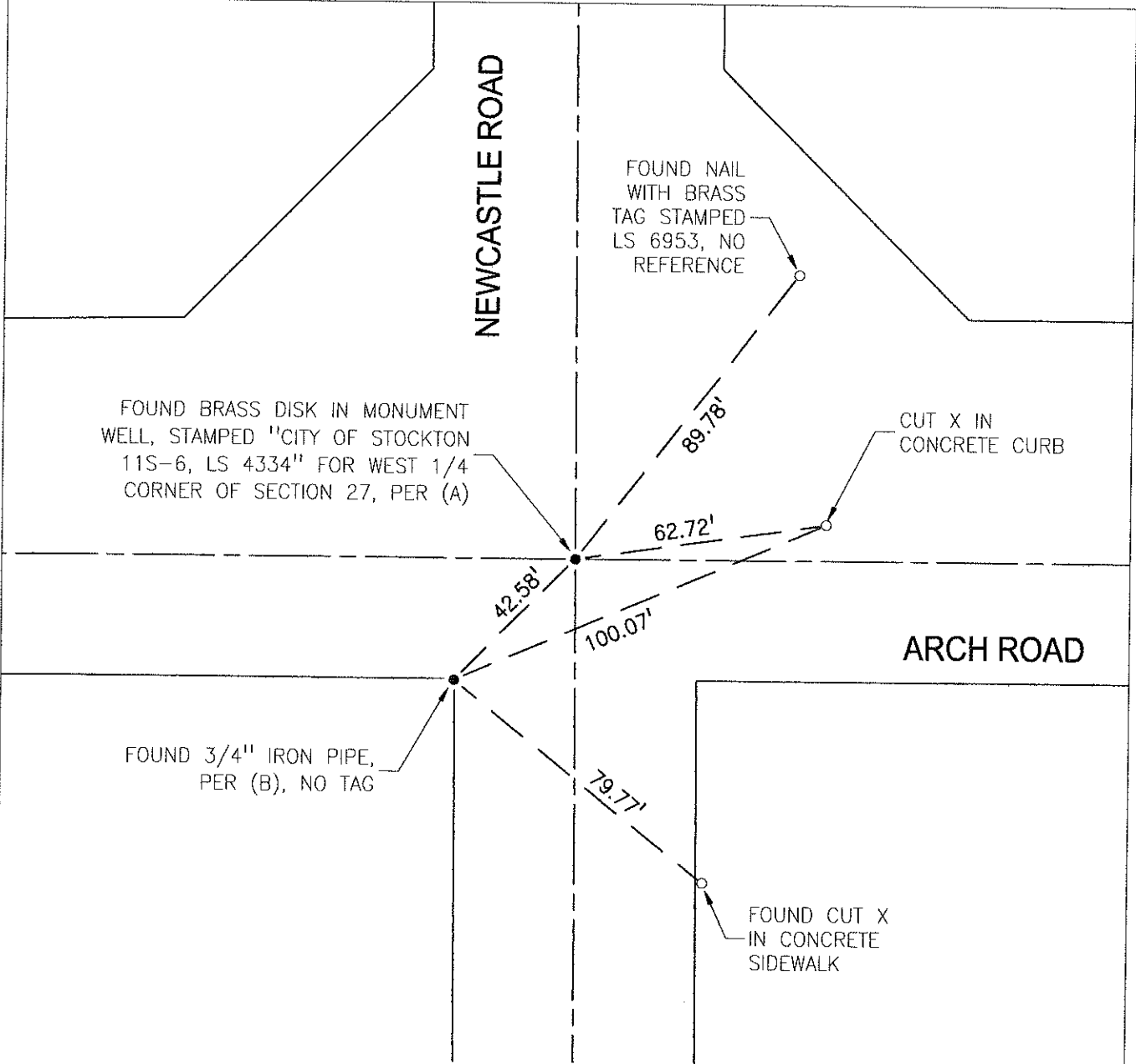
This Corner Record was prepared by me or under my direction in conformance with the Professional Land Surveyor's Act on JUNE 26TH, 2019.
Signed [Signature] P.L.S. or R.C.E. No.: 8366



COUNTY SURVEYOR'S STATEMENT

This Corner Record was received June 28, 2019 and examined and filed July 15, 2019.
Signed James E. Hart P.L.S. or R.C.E. No.: 8657
Title County Surveyor
County Surveyor's Comment _____





REFERENCES

- (A) RECORD OF SURVEY BOOK 37, PAGE 18, SAN JOAQUIN COUNTY RECORDS.
- (B) RECORD OF SURVEY BOOK 24, PAGE 65, SAN JOAQUIN COUNTY RECORDS.

S.J.C.R. SAN JOAQUIN COUNTY RECORDS

