

# CORNER RECORD

Agency Index CR-19-80

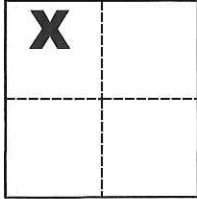
Document Number \_\_\_\_\_

City of \_\_\_\_\_ County of San Joaquin, California

Brief Legal Description Southerly line of Parcels A and B per P.M. 7-154, S.J.C.R.

### CORNER TYPE

### COORDINATES (Optional)



Government Corner  Control   
Meander  Property   
Rancho  Other

N. \_\_\_\_\_ E. \_\_\_\_\_

Elevation \_\_\_\_\_

Units Metric  U.S. Survey Foot

Horizontal Datum \_\_\_\_\_

Zone \_\_\_\_\_ Epoch Date \_\_\_\_\_

Date of Survey May 24, 2019

Vertical Datum \_\_\_\_\_

Complies with Public Resources Code §§8801-8819

Complies with Public Resources Code §§8890-8902

Sec. 1, T.2S., R.9E.,  
M.B.D. & M.

PLS Act Ref.:  8765(d)  8771  8773  Other:

Corner/Monument:  Left as found  Established  Rebuilt  Pre-Construction

Found and tagged  Reestablished  Referenced  Post-Construction

Narrative of corner identified and monument as found, set, reset, replaced, or removed:

See sheet #2 for description(s):

### SURVEYOR'S STATEMENT

This Corner Record was prepared by me or under my direction in conformance with

the Professional Land Surveyors' Act on June 20, 2019

Signed Michael L. Quartaroli P.L.S. or R.C.E. No. L.S. 4450



### COUNTY SURVEYOR'S STATEMENT

This Corner Record was received June 21, 2019

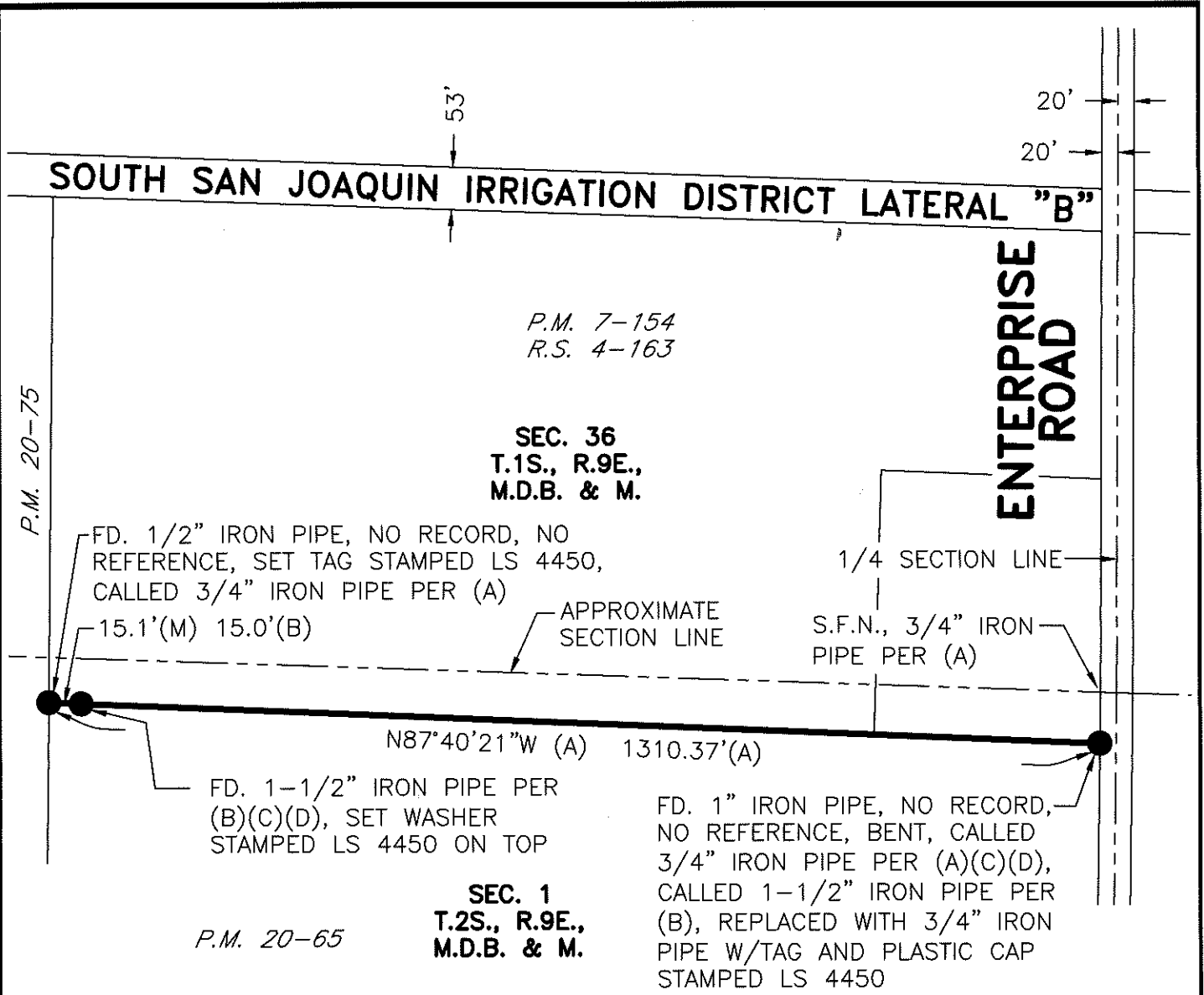
and examined and filed July 11, 2019

Signed James E. Hart P.L.S. or R.C.E. No. 8657

Title County Surveyor

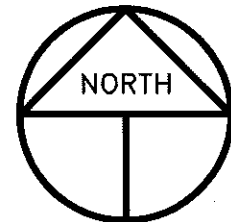
County Surveyor's Comment \_\_\_\_\_





**REFERENCES**

- (A) P.M. 7-154, S.J.C.R.
- (B) R.S. 4-163, S.J.C.R.
- (C) P.M. 20-65, S.J.C.R.
- (D) P.M. 20-75, S.J.C.R.



SCALE: 1" = 200'  
2019-32

**LEGEND**

- INDICATES FOUND MONUMENT, AS NOTED
- R.S. INDICATES RECORD OF SURVEY, BOOK AND PAGE, S.J.C.R.
- P.M. INDICATES PARCEL MAP, BOOK AND PAGE, S.J.C.R.
- S.J.C.R. INDICATES SAN JOAQUIN COUNTY RECORDS
- S.F.N. INDICATES SEARCHED FOUND NOTHING
- (M) INDICATES MEASURED ON THIS SURVEY