

CORNER RECORD

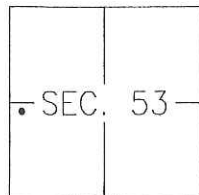
Agency Index CR-19-72

Document Number _____

City of _____

County of SAN JOAQUIN, California

Brief Legal Description MONUMENTS NEAR TEEPEE DRIVE AND LANCE DRIVE PER 24-M&P-7



C.M. WEBER
GRANT

CORNER TYPE

- Government Corner Control
 Meander Property
 Rancho Other

Date of Survey 2019-04-19

COORDINATES (Optional)

- N. _____ E. _____
 Elevation _____
 Units Metric U.S. Survey Foot
 Horizontal Datum _____
 Zone _____ Epoch Date _____
 Vertical Datum: _____
 Complies with Public Resources Code §§8801-8819
 Complies with Public Resources Code §§8890-8902

PLS Act Ref.: 8765(d) 8771 8773 Other: _____

Corner/Monument: Left as found Established Rebuilt Pre-Construction
 Found and tagged Reestablished Referenced Post-Construction

Narrative of corner identified and monument as found, set, reset, replaced, or removed:

See sheet #2 for description(s):

SURVEYOR'S STATEMENT

This Corner Record was prepared by me or under my direction in conformance with the Professional Land Surveyor's Act on JUNE 6TH, 2019.

Signed [Signature] P.L.S. or R.C.E. No.: 8366



COUNTY SURVEYOR'S STATEMENT

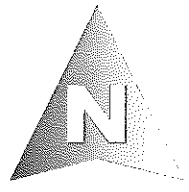
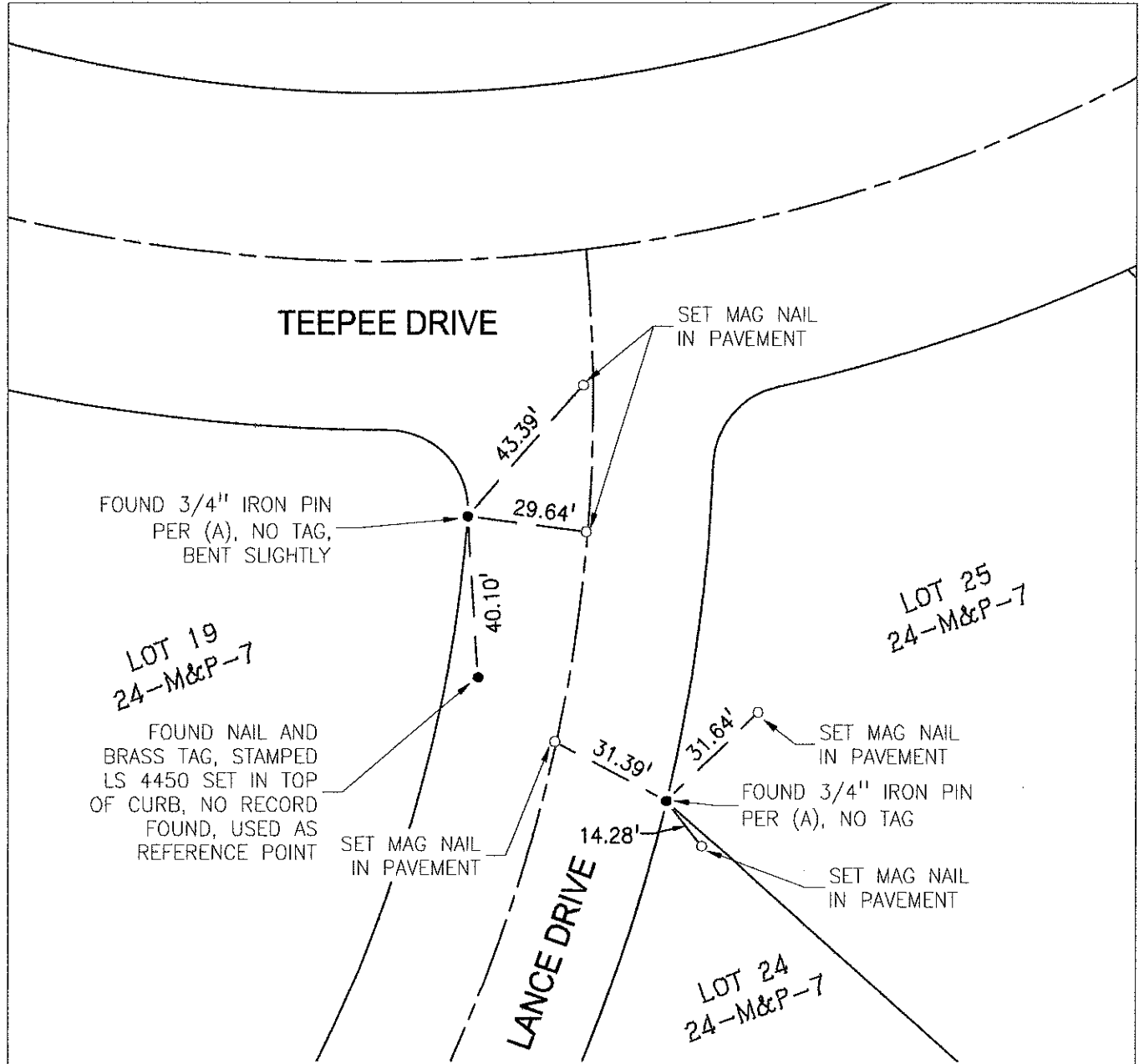
This Corner Record was received June 11, 2019 and examined and filed June 25, 2019.

Signed [Signature] P.L.S. or R.C.E. No.: 8657

Title County Surveyor

County Surveyor's Comment _____





REFERENCES

(A) CHEROKEE INDUSTRIAL PARK, BOOK 24 OF MAPS AND PLATS, PAGE 7, SAN JOAQUIN COUNTY RECORDS.

