

CORNER RECORD

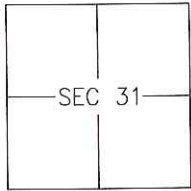
Agency Index CR-19-68

Document Number _____

City of STOCKTON

County of SAN JOAQUIN, California

Brief Legal Description MONUMENT AT INTERSECTION OF MARCH LANE AND ST ANDREWS DRIVE



T2N/R6E

CORNER TYPE

- Government Corner Control
- Meander Property
- Rancho Other

Date of Survey 2019-04-22

COORDINATES (Optional)

- N. _____ E. _____
- Elevation _____
- Units Metric U.S. Survey Foot
- Horizontal Datum _____
- Zone _____ Epoch Date _____
- Vertical Datum: _____
- Complies with Public Resources Code §§8801-8819
- Complies with Public Resources Code §§8890-8902

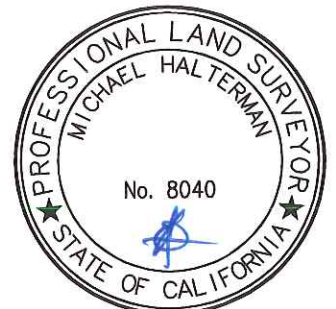
PLS Act Ref.: 8765(d) 8771 8773 Other: _____

Corner/Monument: Left as found Established Rebuilt Pre-Construction
 Found and tagged Reestablished Referenced Post-Construction

Narrative of corner identified and monument as found and set or reset:
 See sheet #2 for description(s):

SURVEYOR'S STATEMENT

This Corner Record was prepared by me or under my direction in conformance with the Land Surveyor's Act on 28 MAY, 2019.
 Signed [Signature] P.L.S. or R.C.E. No.: 8040

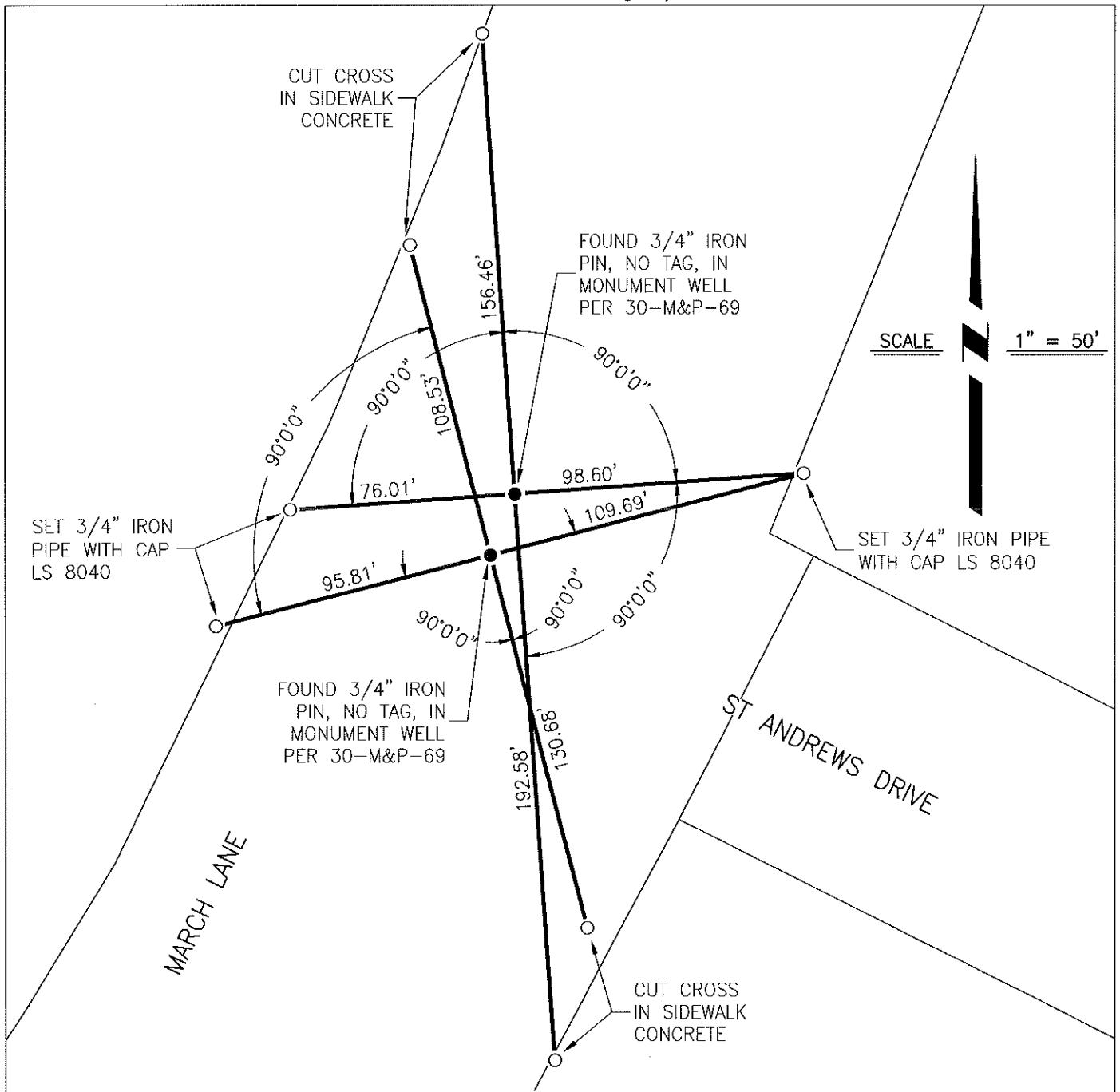


COUNTY SURVEYOR'S STATEMENT

This Corner Record was received May 31, 2019 and examined and filed June 12, 2019.
 Signed James E. Hart P.L.S. or R.C.E. No.: 8657
 Title County Surveyor



County Surveyor's Comment _____



NOTES

1. ALL REFERENCES ARE SAN JOAQUIN COUNTY RECORDS

LEGEND

- FOUND MONUMENT AS NOTED
- SET REFERENCE POINT AS DESCRIBED
- M&P MAPS AND PLATS