

CORNER RECORD

Agency Index CR-19-66

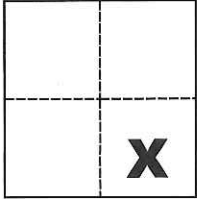
Document Number _____

City of _____ County of San Joaquin, California

Brief Legal Description N. line of Parcel "A" per R.S. 2-23, S.J.C.R.

CORNER TYPE

COORDINATES (Optional)



Government Corner Control
 Meander Property
 Rancho Other

N. _____ E. _____
 Elevation _____
 Units Metric U.S. Survey Foot
 Horizontal Datum _____
 Zone _____ Epoch Date _____
 Vertical Datum _____

Date of Survey September 10, 2018

Complies with Public Resources Code §§8801-8819
 Complies with Public Resources Code §§8890-8902

Sec. 12, T.2S., R.7E.,
 M.D.B. & M.

PLS Act Ref.: 8765(d) 8771 8773 Other:
 Corner/Monument: Left as found Established Rebuilt Pre-Construction
 Found and tagged Reestablished Referenced Post-Construction

Narrative of corner identified and monument as found, set, reset, replaced, or removed:

See sheet #2 for description(s):

SURVEYOR'S STATEMENT

This Corner Record was prepared by me or under my direction in conformance with

the Professional Land Surveyors' Act on June 4, 2019

Signed Michael L. Quarantola P.L.S. or R.C.E. No. L.S. 4450



COUNTY SURVEYOR'S STATEMENT

This Corner Record was received June 6, 2019

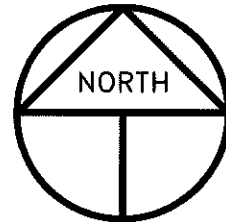
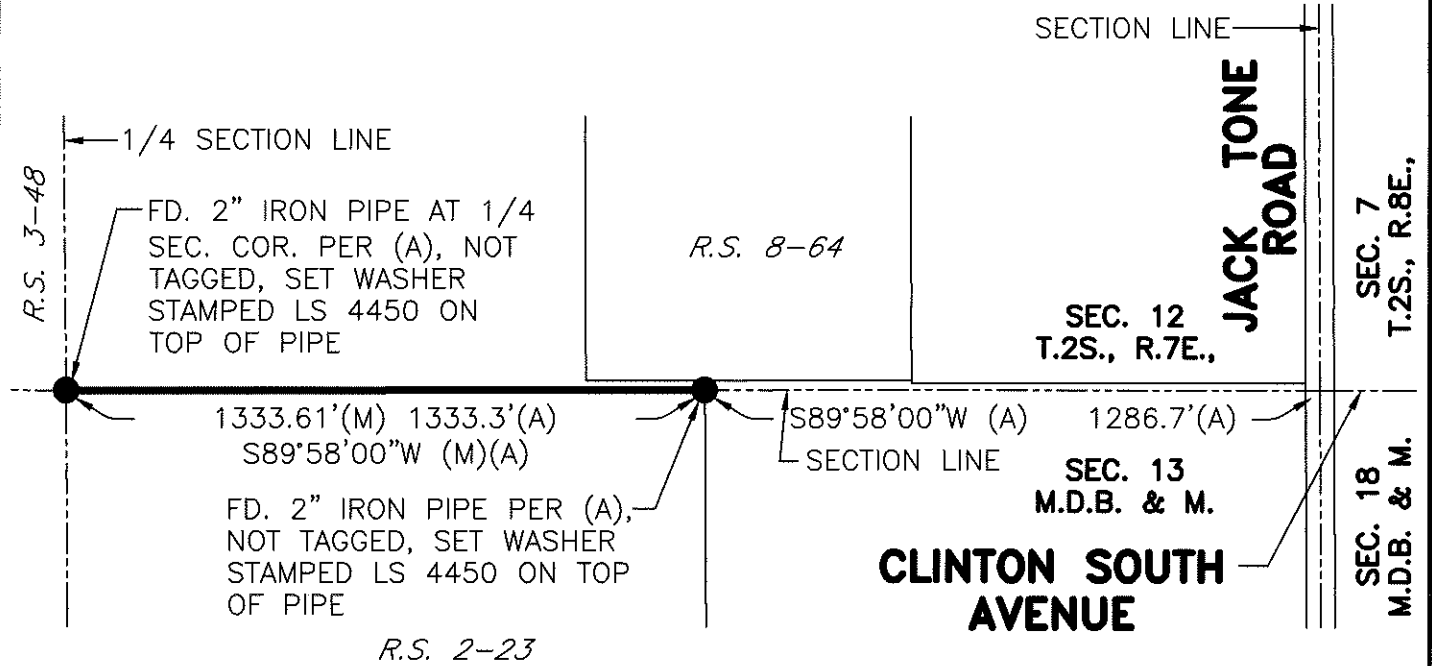
and examined and filed June 14, 2019

Signed James E. Hart P.L.S. or R.C.E. No. 8657

Title County Surveyor

County Surveyor's Comment





SCALE: 1" = 400'
2018-181

REFERENCE

(A) R.S. 2-23, S.J.C.R.

LEGEND

- INDICATES FOUND MONUMENT, AS NOTED
- P.M. INDICATES PARCEL MAP, BOOK AND PAGE, S.J.C.R.
- R.S. INDICATES RECORD OF SURVEY, BOOK AND PAGE, S.J.C.R.
- S.J.C.R. INDICATES SAN JOAQUIN COUNTY RECORDS

