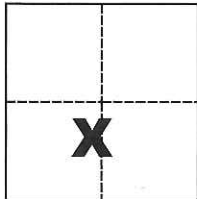


CORNER RECORD

Agency Index CR-19-58
Document Number _____

City of _____ County of San Joaquin, California

Brief Legal Description North and East lines of the North 3 Ac. Parcel as shown on R.S. 8-124



CORNER TYPE

Government Corner Control
Meander Property
Rancho Other

Date of Survey April 25, 2019

COORDINATES (Optional)

N. _____ E. _____
Elevation _____
Units Metric U.S. Survey Foot
Horizontal Datum _____
Zone _____ Epoch Date _____
Vertical Datum _____

Sec. 74, C.M. Weber Grant

Complies with Public Resources Code §§8801-8819
 Complies with Public Resources Code §§8890-8902

PLS Act Ref.: 8765(d) 8771 8773 Other:
Corner/Monument: Left as found Established Rebuilt Pre-Construction
 Found and tagged Reestablished Referenced Post-Construction

Narrative of corner identified and monument as found, set, reset, replaced, or removed:

See sheet #2 for description(s):

SURVEYOR'S STATEMENT

This Corner Record was prepared by me or under my direction in conformance with

the Professional Land Surveyors' Act on 4.29.19

Signed Michael L. Quarantoni P.L.S. or R.C.E. No. L.S. 4450



COUNTY SURVEYOR'S STATEMENT

This Corner Record was received May 23, 2019

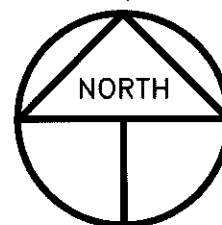
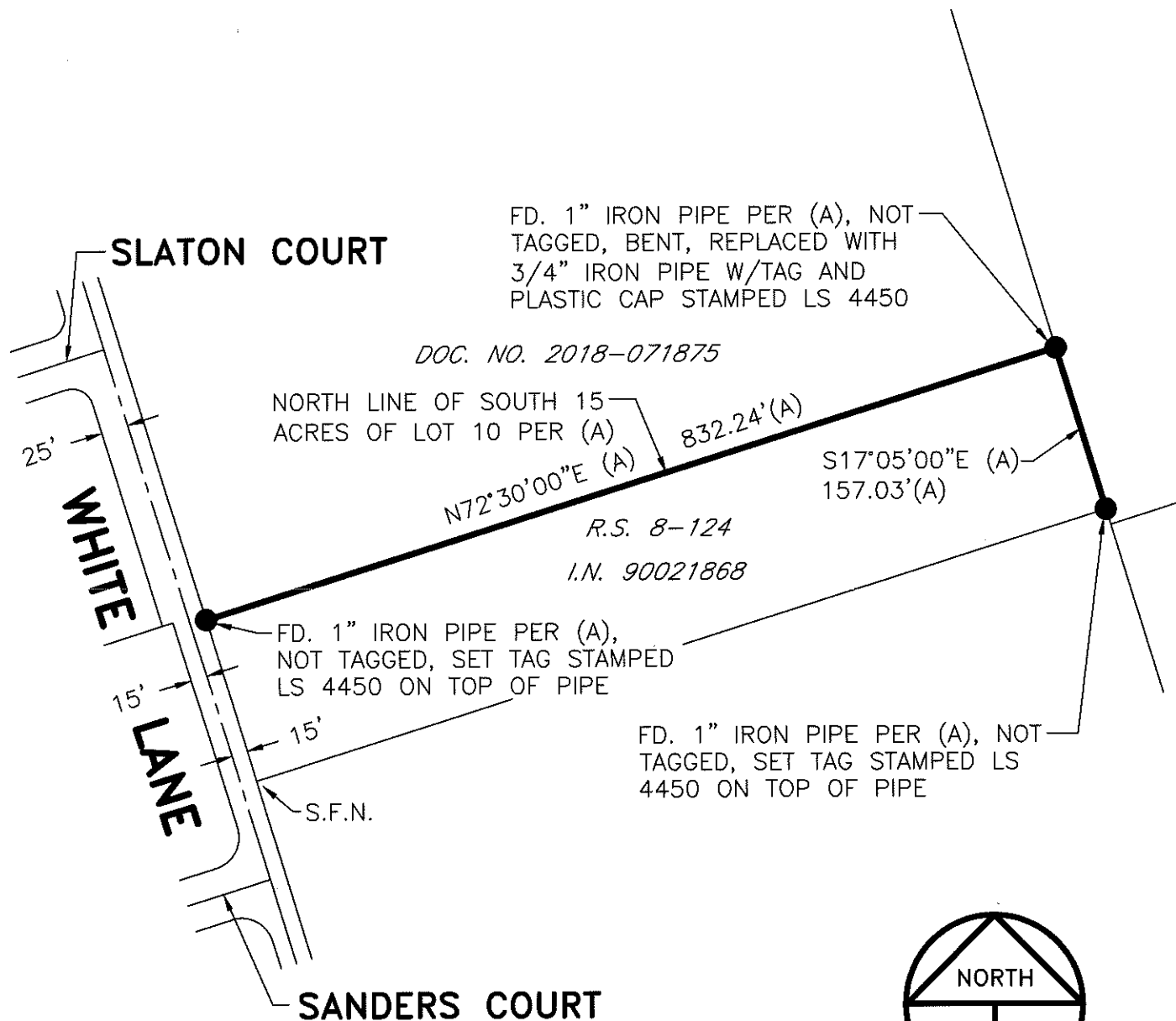
and examined and filed June 4, 2019

Signed James E. Hart P.L.S. or R.C.E. No. 8657

Title County Surveyor

County Surveyor's Comment





SCALE: 1" = 150'
2019-71

REFERENCE

(A) R.S. 8-124, S.J.C.R.

LEGEND

- INDICATES FOUND MONUMENT, AS NOTED
- R.S. INDICATES RECORD OF SURVEY, BOOK AND PAGE, S.J.C.R.
- S.J.C.R. INDICATES SAN JOAQUIN COUNTY RECORDS
- S.F.N. INDICATES SEARCHED FOUND NOTHING
- I.N. INDICATES INSTRUMENT NUMBER, S.J.C.R.
- DOC. NO. INDICATES DOCUMENT NUMBER, S.J.C.R.