

CORNER RECORD

Agency Index CR-19-56
Document Number _____

City of _____ County of San Joaquin, California
Brief Legal Description _____ R.S. 37-147



CORNER TYPE

Government Corner Control
Meander Property
Rancho Other

Date of Survey April 25, 2019

COORDINATES (Optional)

N. _____ E. _____
Elevation _____
Units Metric U.S. Survey Foot
Horizontal Datum _____
Zone _____ Epoch Date _____
Vertical Datum _____

T.4N., R.7E., M.D.B. & M.

Complies with Public Resources Code §§8801-8819
 Complies with Public Resources Code §§8890-8902

PLS Act Ref.: 8765(d) 8771 8773 Other:
Corner/Monument: Left as found Established Rebuilt Pre-Construction
 Found and tagged Reestablished Referenced Post-Construction

Narrative of corner identified and monument as found, set, reset, replaced, or removed:
 See sheet #2 for description(s):

It is the purpose of this corner record to reestablish a monument per R.S. 37-147 that was found missing.

SURVEYOR'S STATEMENT

This Corner Record was prepared by me or under my direction in conformance with
the Professional Land Surveyors' Act on April 26, 2019

Signed [Signature] P.L.S. or R.C.E. No. 7889



COUNTY SURVEYOR'S STATEMENT

This Corner Record was received May 21, 2019
and examined and filed June 4, 2019

Signed James E. Hart P.L.S. or R.C.E. No. 8657
Title County Surveyor

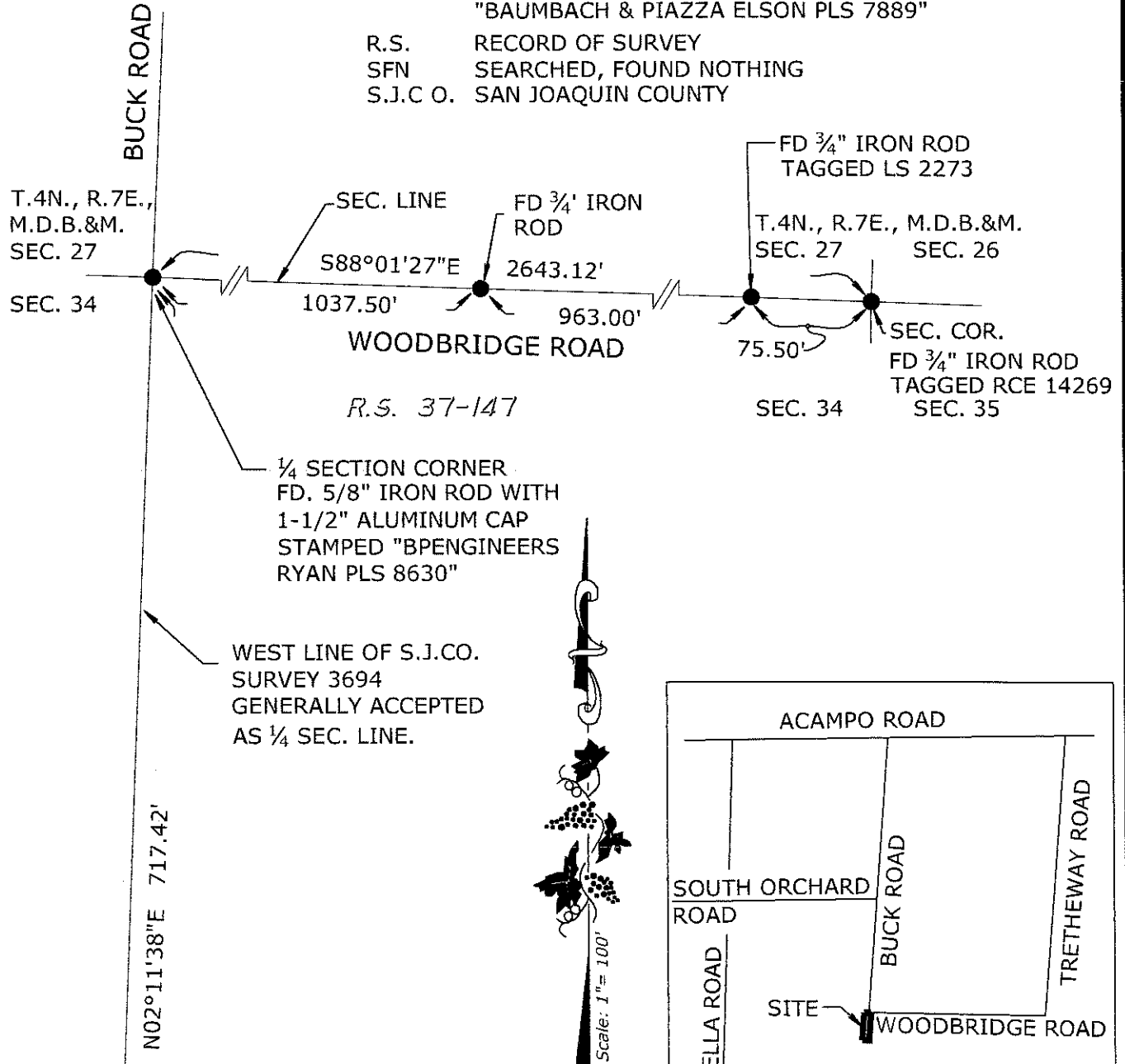
County Surveyor's Comment _____



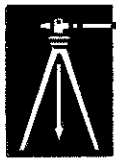
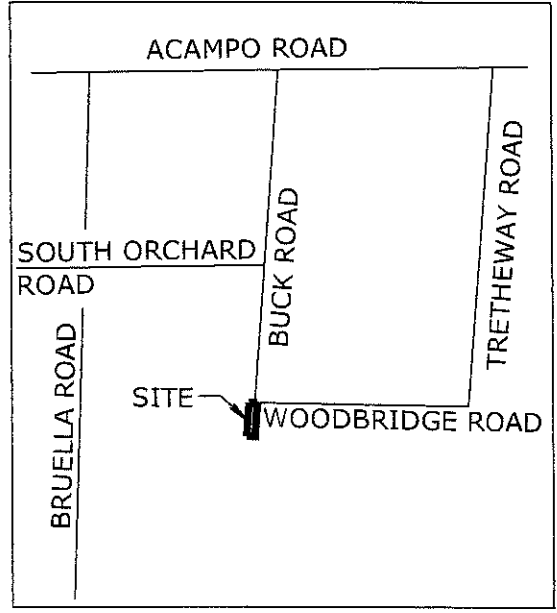
S:\Projects\2010\1001B.dwg\1001B_CR.dwg 05/20/19 11:35am - IBLSON - XREFS: 1001B_TM.dwg 09037_RS.dwg 05020-1_HC.dwg 1001B_HC.dwg 09037_HC.dwg 09x11_BP_P.dwg

LEGEND:

- FD. MONUMENT AS NOTED PER R.S. 37-147
- SET 3/4"x30" IRON ROD, CAPPED AND STAMPED "BAUMBACH & PIAZZA ELSON PLS 7889"
- R.S. RECORD OF SURVEY
- SFN SEARCHED, FOUND NOTHING
- S.J.C O. SAN JOAQUIN COUNTY



- Notes:
1. Monuments are not tagged unless noted.
 2. No attempt was made to verify the monument(s)



PREPARED IN THE OFFICE OF:
BAUMBACH & PIAZZA, INC.
 CIVIL ENGINEERS • SURVEYORS
 www.bpengineers.net
 209.368.6618
 323 W. Elm St.
 Lodi, CA 95240

SFN