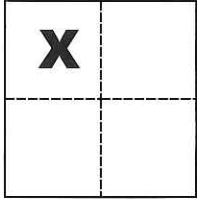


# CORNER RECORD

Agency Index CR-19-54

Document Number \_\_\_\_\_

City of \_\_\_\_\_ County of San Joaquin, CaliforniaBrief Legal Description Southwest Corner of Parcel B per R.S. 23-177, S.J.C.R.**CORNER TYPE****COORDINATES (Optional)**

Government Corner  Control

Meander  Property

Rancho  Other

N. \_\_\_\_\_ E. \_\_\_\_\_

Elevation \_\_\_\_\_

Units Metric  U.S. Survey Foot

Horizontal Datum \_\_\_\_\_

Zone \_\_\_\_\_ Epoch Date \_\_\_\_\_

Vertical Datum \_\_\_\_\_

Date of Survey January 28, 2019

Complies with Public Resources Code §§8801-8819

Complies with Public Resources Code §§8890-8902

Sec. 7, T.2N., R.7E.,  
M.D.B. & M.

PLS Act Ref.:  8765(d)  8771  8773  Other:

Corner/  
Monument:  Left as found  Established  Rebuilt  Pre-Construction

Found and tagged  Reestablished  Referenced  Post-Construction

Narrative of corner identified and monument as found, set, reset, replaced, or removed:

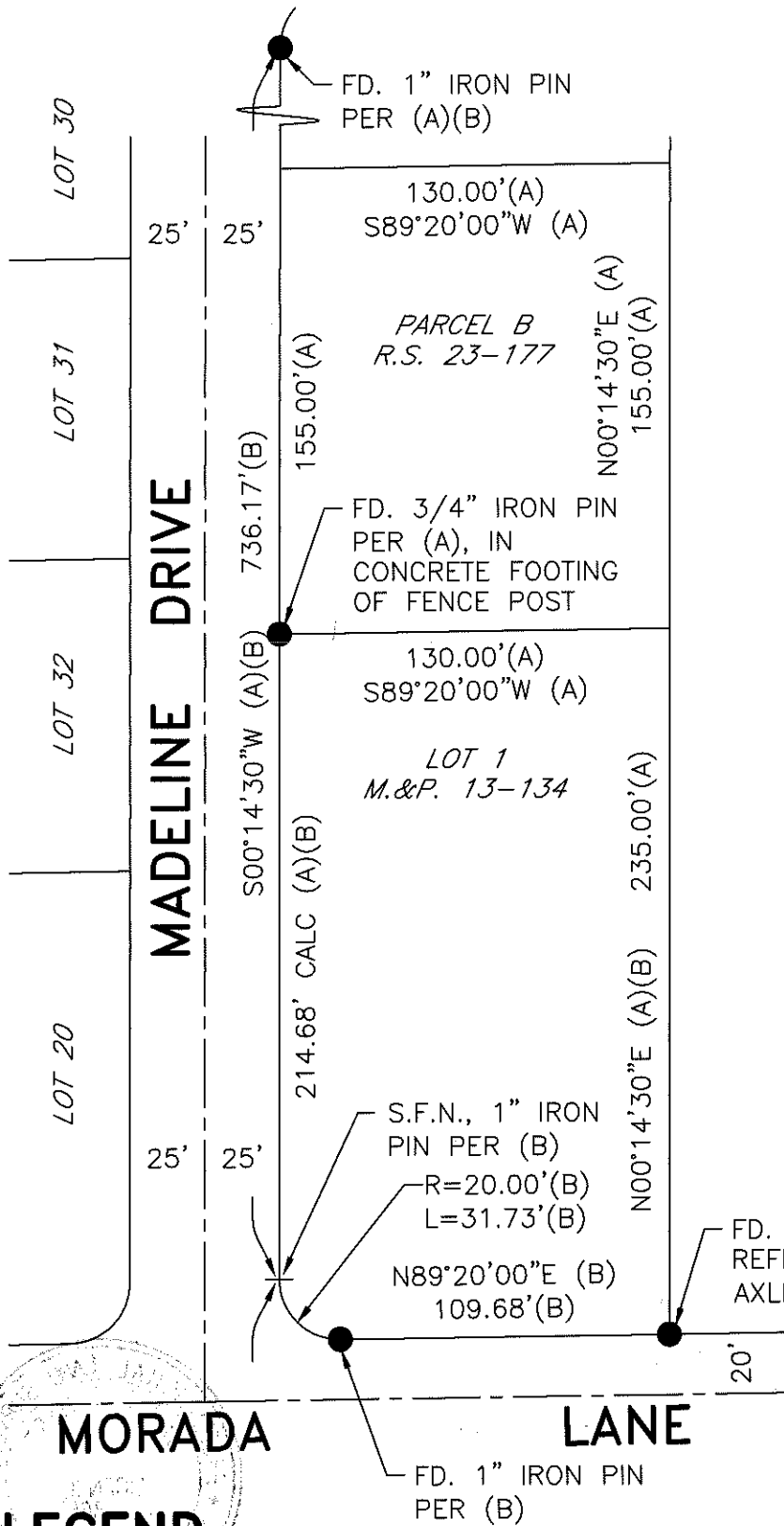
 See sheet #2 for description(s):**SURVEYOR'S STATEMENT**

This Corner Record was prepared by me or under my direction in conformance with

the Professional Land Surveyors' Act on April 11, 2019.Signed Michael L. Quartaroli P.L.S. or R.C.E. No. L.S. 4450**COUNTY SURVEYOR'S STATEMENT**This Corner Record was received May 8, 2019and examined and filed May 22, 2019.Signed James E. Hart P.L.S. or R.C.E. No. 8657Title County Surveyor

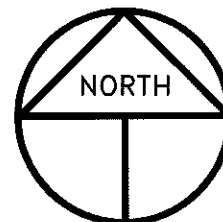
County Surveyor's Comment \_\_\_\_\_





### REFERENCES

- (A) R.S. 23-177, S.J.C.R.
- (B) M.&P. 13-134, S.J.C.R.



SCALE: 1" = 60'  
2019-22

### LEGEND

- INDICATES FOUND MONUMENT, AS NOTED
- R.S. INDICATES RECORD OF SURVEY, BOOK AND PAGE, S.J.C.R.
- M.&P. INDICATES MAPS AND PLATS, VOLUME AND PAGE, S.J.C.R.
- S.J.C.R. INDICATES SAN JOAQUIN COUNTY RECORDS
- S.F.N. INDICATES SEARCHED FOUND NOTHING