

# CORNER RECORD

Agency Index CR-19-51

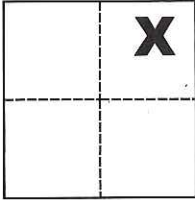
Document Number \_\_\_\_\_

City of \_\_\_\_\_ City of Manteca \_\_\_\_\_ County of \_\_\_\_\_ San Joaquin \_\_\_\_\_, California

Brief Legal Description Chiseled cross along the Westerly right-of-way line of Main Street as shown on R.S. 23-160, S.J.C.R.

### CORNER TYPE

### COORDINATES (Optional)



Government Corner  Control   
Meander  Property   
Rancho  Other

N. \_\_\_\_\_ E. \_\_\_\_\_

Elevation \_\_\_\_\_

Units Metric  U.S. Survey Foot

Horizontal Datum \_\_\_\_\_

Zone \_\_\_\_\_ Epoch Date \_\_\_\_\_

Date of Survey January 5, 2019

Vertical Datum \_\_\_\_\_

Complies with Public Resources Code §§8801-8819

Complies with Public Resources Code §§8890-8902

Sec. 32, T.1S., R.7E.,  
M.D.B. & M.

PLS Act Ref.:  8765(d)  8771  8773  Other:

Corner/  
Monument:  Left as found  Established  Rebuilt  Pre-Construction  
 Found and tagged  Reestablished  Referenced  Post-Construction

Narrative of corner identified and monument as found, set, reset, replaced, or removed:

See sheet #2 for description(s):

### SURVEYOR'S STATEMENT

This Corner Record was prepared by me or under my direction in conformance with

the Professional Land Surveyors' Act on April 23, 2019

Signed Michael L. Quaranta P.L.S. or R.C.E. No. L.S. 4450



### COUNTY SURVEYOR'S STATEMENT

This Corner Record was received April 24, 2019

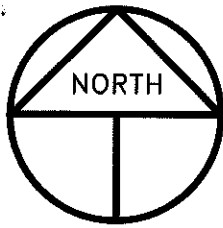
and examined and filed May 7, 2019

Signed James E. Hart P.L.S. or R.C.E. No. 8657

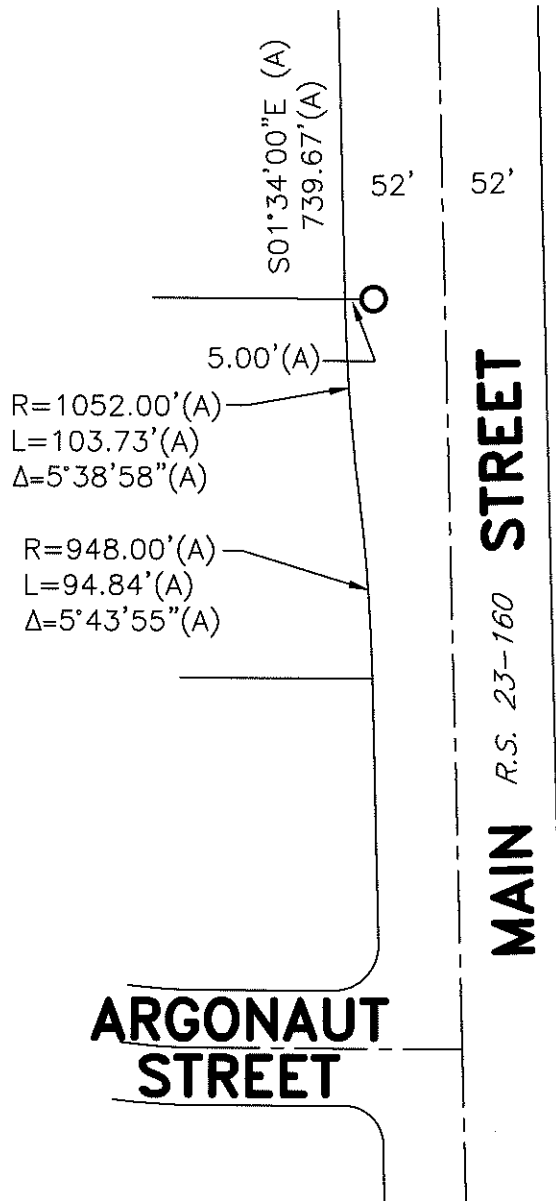
Title County Surveyor

County Surveyor's Comment





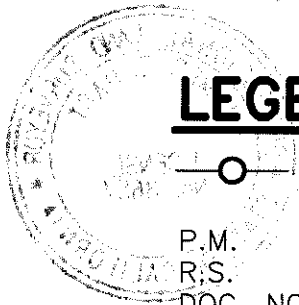
SCALE: 1" = 100'  
2009-84 MAIN 4



**REFERENCE**

(A) R.S. 23-160, S.J.C.R.

**LEGEND**



- INDICATES FOUND CHISELED CROSS PER (A), REPLACED AND SET LEAD AND TACK W/TAG STAMPED LS 4450
- P.M. INDICATES PARCEL MAP, BOOK AND PAGE, S.J.C.R.
- R.S. INDICATES RECORD OF SURVEY, BOOK AND PAGE, S.J.C.R.
- DOC. NO. INDICATES DOCUMENT NUMBER, S.J.C.R.
- S.J.C.R. INDICATES SAN JOAQUIN COUNTY RECORDS
- S.F.N. INDICATES SEARCHED FOUND NOTHING