

CORNER RECORD

Agency Index CR-19-44

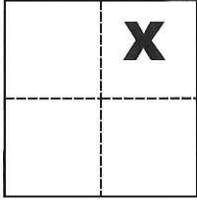
Document Number _____

City of _____ County of San Joaquin, California

Brief Legal Description Northeast Quarter of Section 6, T.3S., R.6E., M.D.B. & M.

CORNER TYPE

COORDINATES (Optional)



Government Corner Control
Meander Property
Rancho Other

N. _____ E. _____

Elevation _____

Units Metric U.S. Survey Foot

Horizontal Datum _____

Zone _____ Epoch Date _____

Date of Survey October 26, 2018

Vertical Datum _____

Complies with Public Resources Code §§8801-8819

Complies with Public Resources Code §§8890-8902

Sec. 6, T.3S., R.6E.,
M.D.B. & M.

PLS Act Ref.: 8765(d) 8771 8773 Other:

Corner/Monument: Left as found Established Rebuilt Pre-Construction

Found and tagged Reestablished Referenced Post-Construction

Narrative of corner identified and monument as found, set, reset, replaced, or removed:

See sheet #2 for description(s):

SURVEYOR'S STATEMENT

This Corner Record was prepared by me or under my direction in conformance with

the Professional Land Surveyors' Act on April 17, 2019

Signed Michael L. Quantz P.L.S. or R.C.E. No. L.S. 4450



COUNTY SURVEYOR'S STATEMENT

This Corner Record was received April 18, 2019

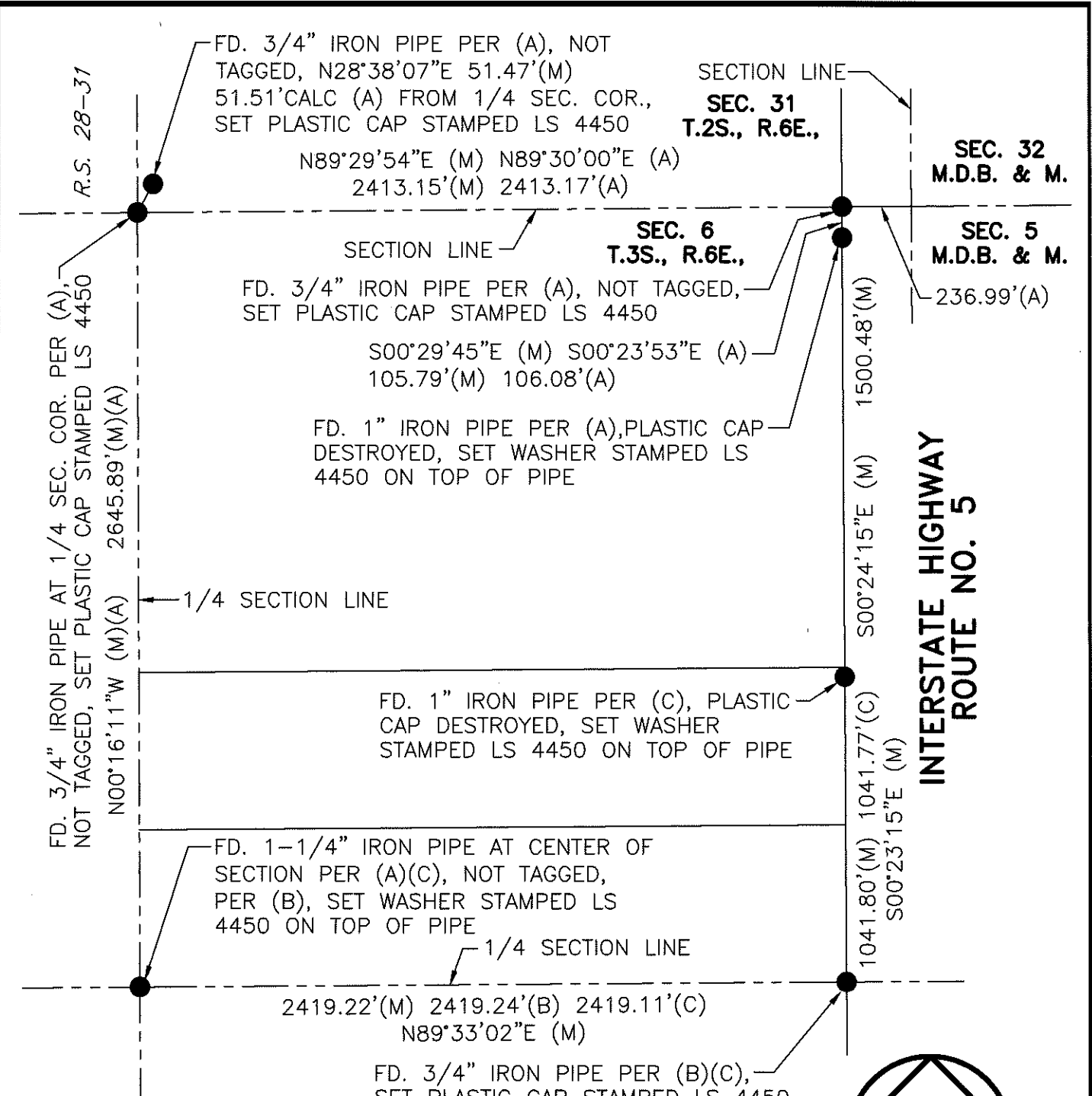
and examined and filed May 2, 2019

Signed James E. Hart P.L.S. or R.C.E. No. 8657

Title County Surveyor

County Surveyor's Comment

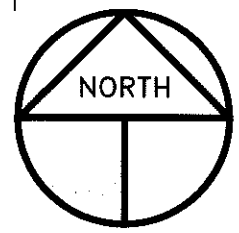




REFERENCES

- (A) R.S. 28-31, S.J.C.R.
- (B) P.M. 25-23, S.J.C.R.
- (C) R.S. 31-11, S.J.C.R.

- P.M. 25-23
- P.M. 17-90
- R.S. 31-11
- P.M. 14-64



SCALE: 1" = 500'
 2018-234

LEGEND

- INDICATES FOUND MONUMENT, AS NOTED
- R.S. INDICATES RECORD OF SURVEY, BOOK AND PAGE, S.J.C.R.
- P.M. INDICATES PARCEL MAP, BOOK AND PAGE, S.J.C.R.
- S.J.C.R. INDICATES SAN JOAQUIN COUNTY RECORDS