

# CORNER RECORD

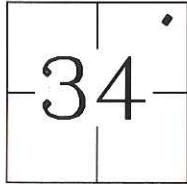
Agency Index CR-19-42  
Document Number \_\_\_\_\_

City of LATHROP County of SAN JOAQUIN, California

Brief Legal Description LOT 6 OF TRACT NO. 2529 RECORDED IN BOOK 31 OF MAPS AND PLATS, PAGE 85, SAN JOAQUIN COUNTY RECORDS, SECTION 34, TOWNSHIP 1 SOUTH, RANGE 6 EAST, M.D.B.&M

### CORNER TYPE

### COORDINATES (Optional)



Government Corner  Control  
Meander  Property  
Rancho  Other

N. \_\_\_\_\_ E. \_\_\_\_\_  
 Elevation \_\_\_\_\_  
 Units Metric  U.S. Survey Foot   
 Horizontal Datum \_\_\_\_\_  
Zone \_\_\_\_\_ Epoch Date \_\_\_\_\_

Date of Survey 3-8-2019

Vertical Datum \_\_\_\_\_  
 Complies with Public Resources Code §§8801-8819  
 Complies with Public Resources Code §§8890-8902

PLS Act Ref.:  8765(d)  8771  8773  Other  
Corner/Monument:  Left as found  Established  Rebuilt  Pre-Construction  
 Found and tagged  Reestablished  Referenced  Post-Construction

Narrative of corner identified and monument as found, set, reset, replaced, or removed:

See sheet #2 for description(s):

SEE SHEET 2 FOR LOCATION AND DESCRIPTION OF FOUND AND SET MONUMENTS

### SURVEYOR'S STATEMENT

This Corner Record was prepared by me or under my direction in conformance with the Professional Land Surveyor's Act on MARCH 11, 2019

Signed [Signature] P.L.S. 5277



### COUNTY SURVEYOR'S STATEMENT

This corner record was received April 16, 2019  
and examined and filed May 2, 2019

Signed James E. Hart P.L.S. or P.C.E. No. 8657

Title County Surveyor

County Surveyor's Comment





FOUND 3/4" IP  
DOWN 5"  
TAGGED RCE 24029

FOUND 3/4" IP  
DOWN 3"  
TAGGED RCE 24029

LOUISE AVENUE

N:5101.86  
E:4973.20

N:5099.46  
E:5268.33

**LEGEND**

- FOUND MONUMENT AS NOTED
- SET MONUMENT AS NOTED
- ⊗ CONTROL POINT
- ⊙ SANITARY SEWER CLEAN OUT
- ⊕ SANITARY SEWER MANHOLE
- STORM DRAIN GRATE
- STORM DRAIN GRATE
- IP IRON PIPE
- ( ) RECORD DATA AS SHOWN ON TRACT NO. 2529

FOUND TAG RCE 24029  
FLUSH ON CURB

N:5048.57  
E:5406.97

FOUND X ON CONCRETE

N:5032.69  
E:5338.83

N:4946.10  
E:5127.38

SET X ON CURB  
JANUARY 13, 2017

(N 89°32'30" W)  
(218.71')

FOUND 3/4" IP  
DOWN 6"  
TAGGED RCE 24029  
HAS BEEN PAVED OVER

N:4927.66  
E:5333.68

LOT 6 OF TRACT NO. 2529  
RECORDED IN BOOK 31 OF MAPS AND  
PLATS, PAGE 85, SAN JOAQUIN COUNTY  
RECORDS

(A165.56'  
R396.00'  
D23°57'15")

(N 14°27'06" E)  
(76.60')

FOUND 3/4" IP DOWN 10"  
NO TAG JAN 13, 2017. PIPE  
DESTROYED DUE TO RECENT  
CONSTRUCTION, RESET WITH  
BRASS TAG FLUSH ON  
SIDEWALK STAMPED LS 5277

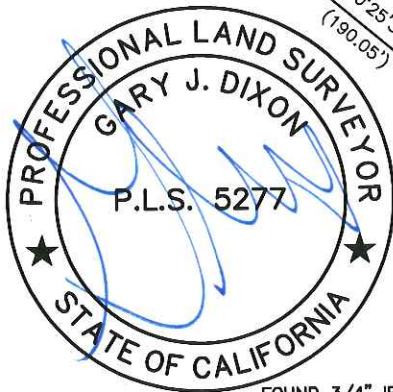
N:4775.37  
E:5272.85

(A50.95'  
R500.00'  
D5°50'17")

N:4734.28  
E:5242.32

FOUND 3/4" IP DOWN 10"  
TAGGED RCE 24029 JAN 13,  
2017. PIPE DESTROYED DUE  
TO RECENT CONSTRUCTION,  
RESET WITH 3/4" IP DOWN  
6" TAGGED LS 5277

HARLAN ROAD



FOUND 3/4" IP  
DOWN 10"  
TAGGED RCE 24029

N:4602.63  
E:5074.29

SET X ON CURB  
JANUARY 13, 2017

N:4696.50  
E:5335.19

