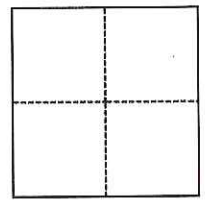


CORNER RECORD

Agency Index CR-19-40
 Document Number _____

City of Stockton County of San Joaquin, California
 Brief Legal Description 2.88 ACRE PARCEL SHOWN ON R.S. 26-91; SEC 53 OF THE C.M. WEBER GRANT



CORNER TYPE

- Government Corner Control
 Meander Property
 Rancho Other

Date of Survey January 13, 2019

COORDINATES (Optional)

- N. _____ E. _____
 Elevation _____
 Units Metric U.S. Survey Foot
 Horizontal Datum _____
 Zone _____ Epoch Date _____
 Vertical Datum _____
 Complies with Public Resources Code §§8801-8819
 Complies with Public Resources Code §§8890-8902

- PLS Act Ref.: 8765(d) 8771 8773 Other:
 Corner/
 Monument: Left as found Established Rebuilt Pre-Construction
 Found and tagged Reestablished Referenced Post-Construction

Narrative of corner identified and monument as found, set, reset, replaced, or removed:

- See sheet #2 for description(s):
 FOUND MONUMENTS AS SHOWN ON DIAGRAM
 SET WITNESS POINTS AS SHOWN ON DIAGRAM

SURVEYOR'S STATEMENT

This Corner Record was prepared by me or under my direction in conformance with
 the Professional Land Surveyors' Act on APRIL 8, 2019
 Signed William M. Koch (P.L.S.) or R.C.E. No. 8092



COUNTY SURVEYOR'S STATEMENT

This Corner Record was received April 12, 2019
 and examined and filed April 23, 2019
 Signed James E. Hart P.L.S. or R.C.E. No. 8657
 Title County Surveyor



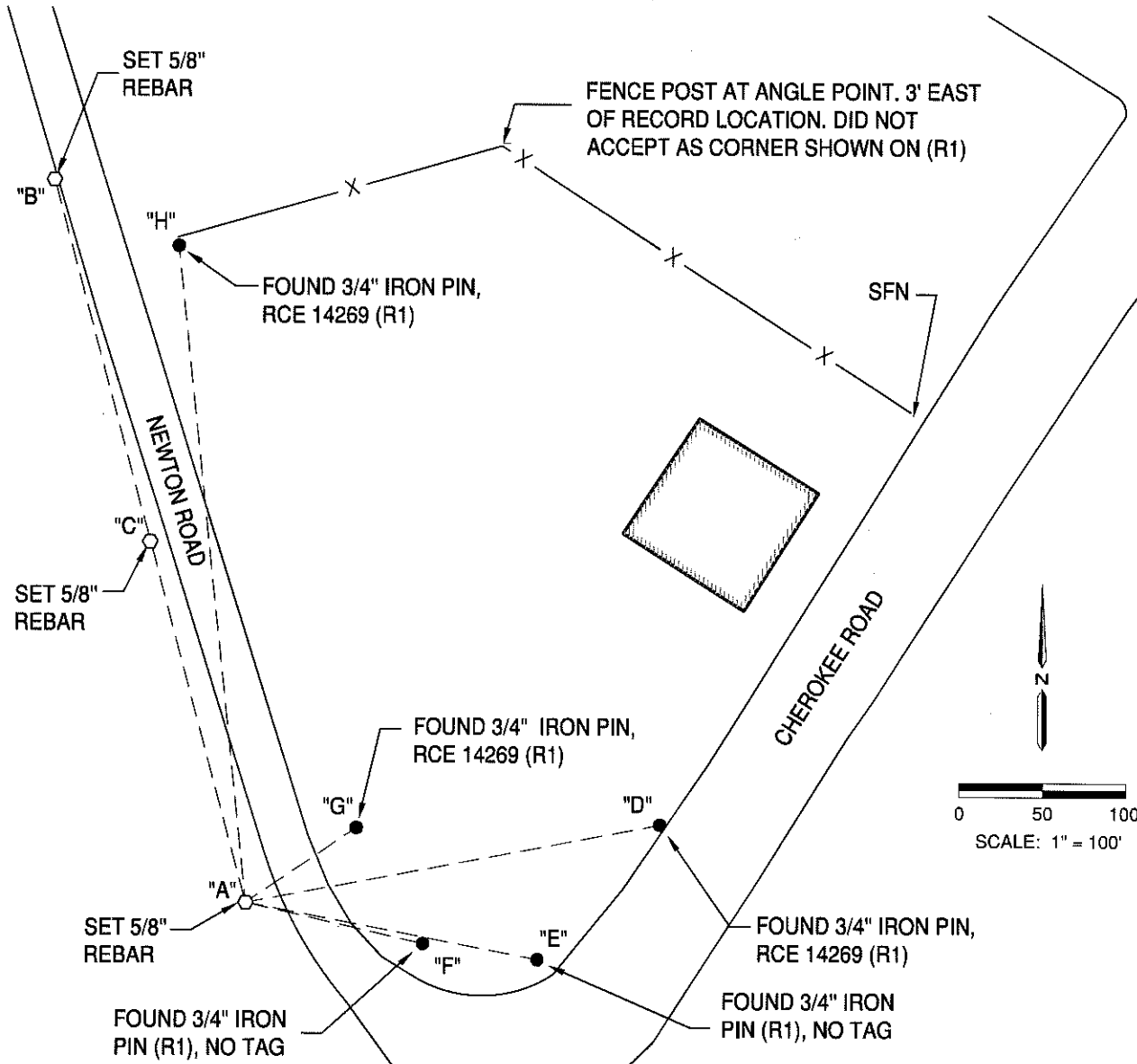
County Surveyor's Comment

LEGEND:

FENCE	— X —
MONUMENT TIE LINE	- - - - -
EDGE OF PAVEMENT	=====
RS	RECORD OF SURVEY

REFERENCES:

(R1) 26 RS 91, SAN JOAQUIN COUNTY RECORDS



BS-@-FS	ANGLE	DISTANCE
B-A-B	0°00'00"	450.00
B-A-C	0°00'00"	225.00
B-A-D	94°00'36"	252.47
B-A-E	115°48'48"	177.56
B-A-F	117°50'55"	108.38
B-A-G	70°10'28"	79.65
B-A-H	8°53'59"	397.51