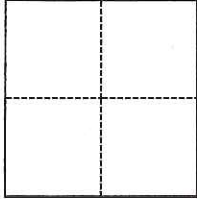


CORNER RECORD

Agency Index CR-19-39

Document Number _____

City of STOCKTON County of SAN JOAQUIN, CaliforniaBrief Legal Description A PORTION OF PARCEL 3 PER R.S. 34-75 IN SEC. 48, C.M. WEBER GRANT**CORNER TYPE****COORDINATES (Optional)**

- Government Corner Control
 Meander Property
 Rancho Other

N. _____ E. _____

Elevation _____

Units Metric U.S. Survey Foot

Horizontal Datum _____

Zone _____ Epoch Date _____

Vertical Datum _____

 Complies with Public Resources Code §§8801-8819 Complies with Public Resources Code §§8890-8902Date of Survey MARCH 18, 2019

PLS Act Ref.:

 8765(d) 8771 8773 Other:Corner/
Monument: Left as found Established Rebuilt Pre-Construction Found and tagged Reestablished Referenced Post-Construction

Narrative of corner identified and monument as found, set, reset, replaced, or removed:

 See sheet #2 for description(s):

PRE-CONSTRUCTION CORNER RECORD. THIS DOCUMENT IS FOR THE PURPOSE OF PRESERVING AND ESTABLISHING TIES TO EXISTING MONUMENTS IN THE AREA OF NEW CONSTRUCTION OF IMPROVEMENTS, AS SHOWN ON BOOK 34 OF RECORD OF SURVEYS, PAGE 75, SAN JOAQUIN COUNTY RECORDS.

SURVEYOR'S STATEMENT

This Corner Record was prepared by me or under my direction in conformance with

the Professional Land Surveyors' Act on April 9, 2019Signed Zachary C. Wong P.L.S. or R.C.E. No. L.S. 7600**COUNTY SURVEYOR'S STATEMENT**This Corner Record was received April 10, 2019and examined and filed April 17, 2019Signed James E. Hart P.L.S. or R.C.E. No. 8657Title County Surveyor**County Surveyor's Comment**

D.D. Sheet No. 35

LINE TABLE PER (A)		
	BEARING	DISTANCE
L1	N84°17'46"E	402.94'
L2	N84°17'46"E	318.00'
L3	N84°17'46"E	84.94'
L4	S5°42'14"E	510.00'
L5	S5°42'14"E	370.00'
L6	S5°42'14"E	140.00'
L7	S84°17'46"W	402.94'
L8	N5°42'14"W	510.00'
L9	S84°17'46"W	84.94'

FOUND MONUMENT TABLE PER (A)			
	NORTHING	EASTING	DESCRIPTION
1	9784.09	8672.36	5/8" REBAR TAGGED R.C.E. 15831 IN MON. BOX
2	9403.82	8710.34	5/8" REBAR TAGGED R.C.E. 15831 IN MON. BOX
3	10000.22	9999.89	5/8" REBAR TAGGED R.C.E. 15831 IN MON. BOX
4	9429.11	9775.57	5/8" REBAR, NO TAG (3/4" REBAR TAGGED L.S. 4732)
5	9559.89	9677.13	5/8" REBAR, NO TAG
6	9928.02	9640.41	5/8" REBAR, NO TAG, BENT
7	9936.56	9724.65	5/8" REBAR, NO TAG (3/4" REBAR TAGGED L.S. 4732)

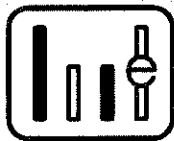
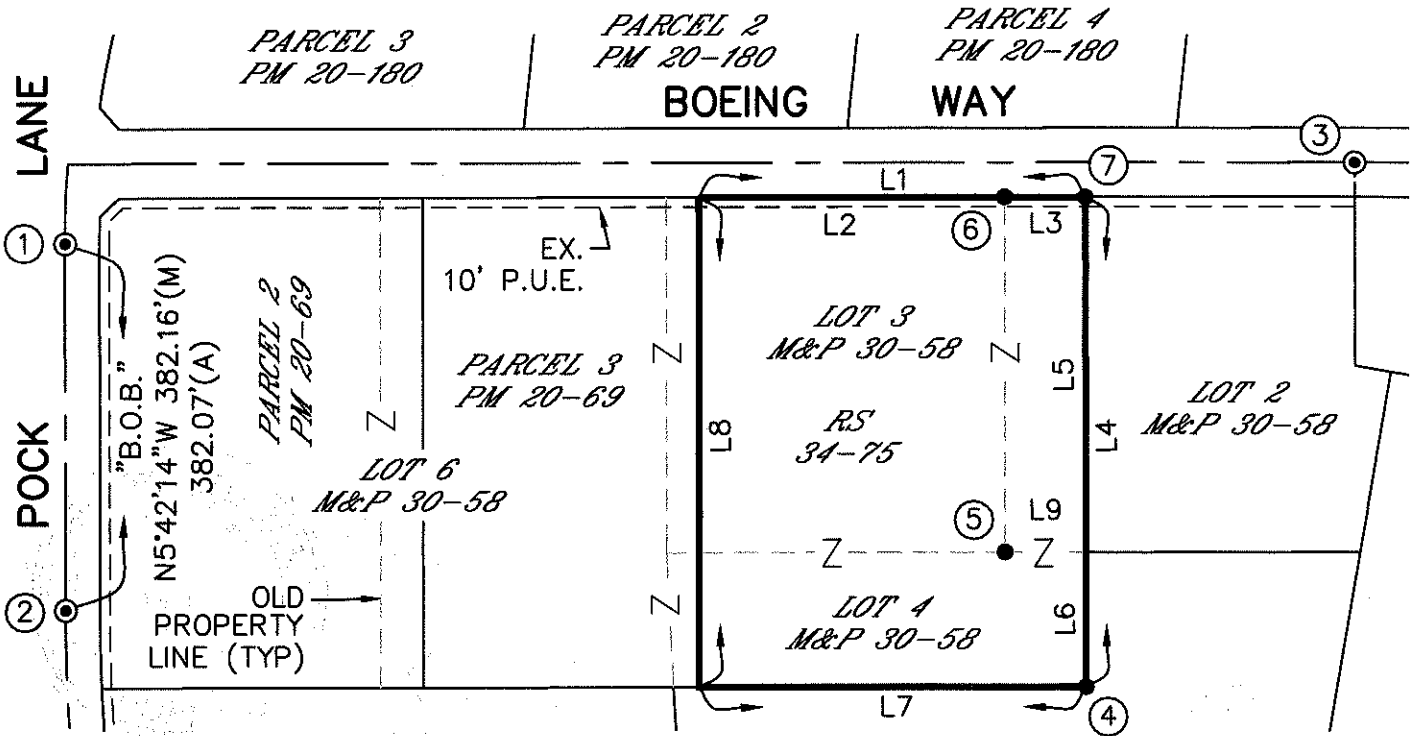
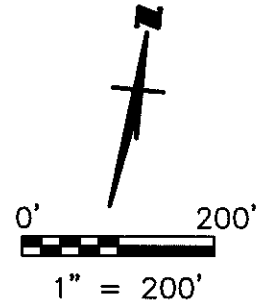
LEGEND:

- B.O.B. BASIS OF BEARINGS
- EX. EXISTING
- (M) MEASURED
- M&P MAPS & PLATS, BOOK-PAGE
- MON. MONUMENT
- PM PARCEL MAP, BOOK-PAGE
- P.U.E. PUBLIC UTILITY EASEMENT
- RS RECORD OF SURVEY, BOOK-PAGE
- ⊙ FOUND MONUMENT BOX AS NOTED
- FOUND MONUMENT AS NOTED

- Z - MERGED PROPERTY LINE

DESCRIPTION:

THIS DOCUMENT IS FOR THE PURPOSE OF PRESERVING AND ESTABLISHING TIES TO EXISTING MONUMENTS.



WONG ENGINEERS, INC.
 PLANNING ENGINEERING SURVEYING
 4578 FEATHER RIVER DRIVE, SUITE A
 STOCKTON, CALIFORNIA (209) 476-0011
 MARCH 25, 2019

REFERENCE:
 (A) RS 34-75