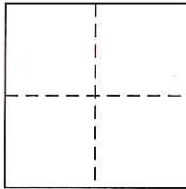


CORNER RECORD

Agency Index CR-19-37

Document Number _____

City of _____

County of San Joaquin, CaliforniaBrief Legal Description 3/4" Iron Pipe set at the northwest corner of the parcel shown on 5 ROS 288**CORNER TYPE**

- Government Corner Control
 Meander Property
 Rancho Other

Date of Survey November 5, 2018**COORDINATES (Optional)**

N. _____ E. _____

Elevation _____

Units Metric U.S. Survey Foot

Horizontal Datum _____

Zone _____ Epoch Date _____

Vertical Datum _____

 Complies with Public Resources Code §§8801-8819 Complies with Public Resources Code §§8890-8902

- PLS Act Ref: 8765(d) 8771 8773 Other: _____
 Corner/Monument: Left as found Established Rebuilt Pre-Construction
 Found and tagged Reestablished Referenced Post-Construction

Narrative of corner identified and monument as found, set, reset, replaced, or removed:

 See sheet #2 for description(s) :

This corner record is being filed to establish the position of the 3/4" iron pipe (no tag, up 0.25') marking the northwest corner of that certain parcel of land shown on 5 ROS 288 at the intersection of Kile Road and the Union Pacific Railroad, prior to gas line construction.

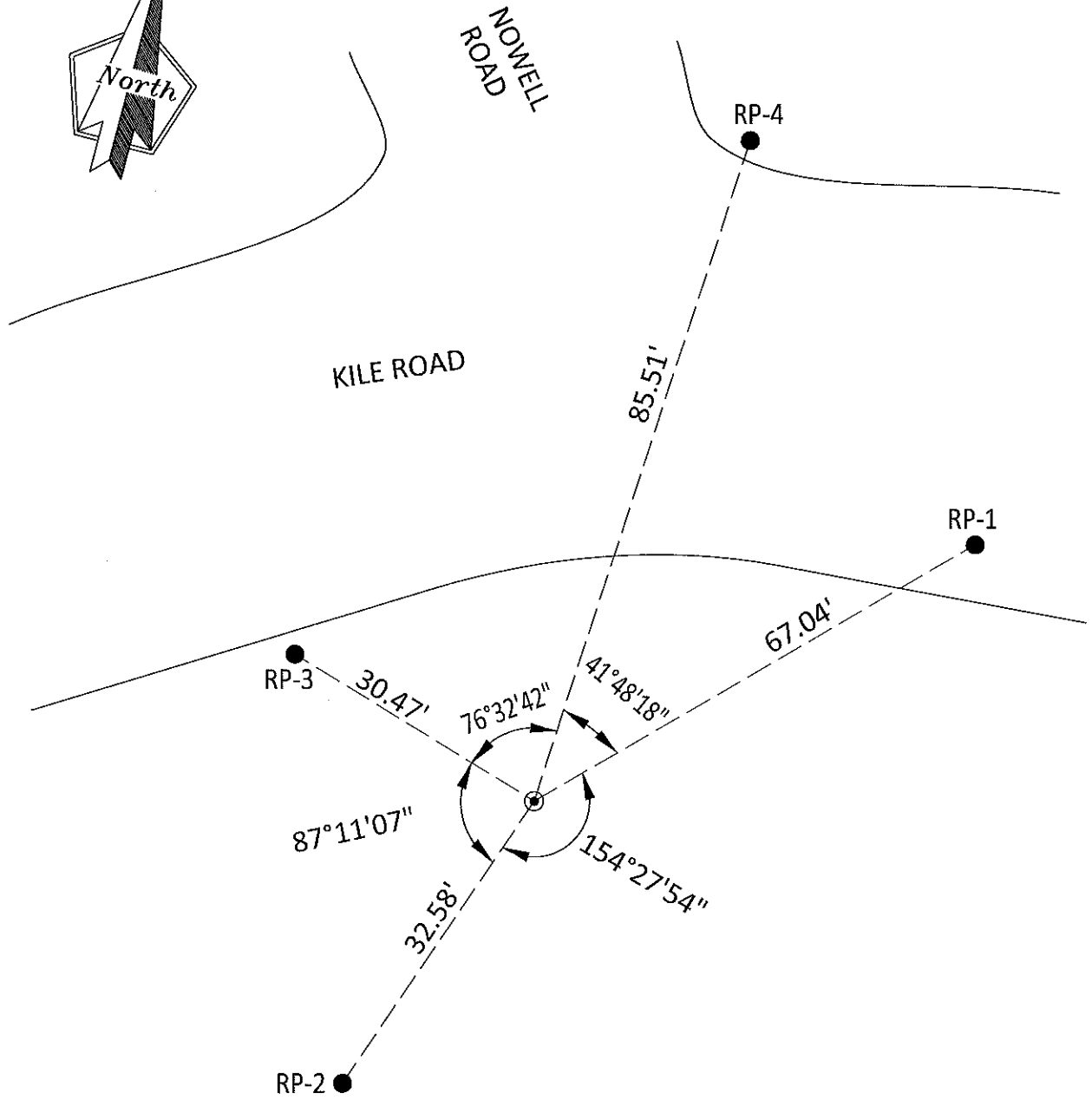
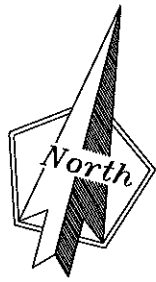
SURVEYOR'S STATEMENT

This Corner Record was prepared by me or under my direction in conformance with

the Professional Land Surveyors' Act on 3/21/2019Signed Timothy Kelly P.L.S. or R.C.E. No. L-7089**COUNTY SURVEYOR'S STATEMENT**This Corner Record was received March 28, 2019and examined and filed April 12, 2019Signed James E. Hart P.L.S. or R.C.E. No. 8657Title County Surveyor

County Surveyor's Comment _____





LEGEND

- ⊙ FOUND 3/4" IRON PIPE OPEN
PER 5 ROS 288
- SET 5/8" REBAR WITH CAP
PG&E CONTROL POINT
- ROS RECORD OF SURVEY, SAN JOAQUIN COUNTY RECORDS

NOTE:
THE EXISTING MONUMENT AS
SHOWN IS REFERENCED BY
POINTS RP-1, RP-2, RP-3 AND
RP-4