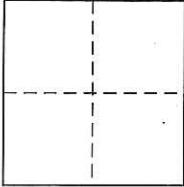


# CORNER RECORD

Agency Index CR-19-36

Document Number \_\_\_\_\_

City of \_\_\_\_\_

County of San Joaquin, CaliforniaBrief Legal Description Pin and Washer in Monument Box at S.W. Cor. of S.E. 1/4 of Sec. 34, Township 5 North, Range 5 East, MDM**CORNER TYPE**

- Government Corner       Control  
 Meander                       Property  
 Rancho                               Other

Date of Survey November 5, 2018**COORDINATES (Optional)**

N. \_\_\_\_\_ E. \_\_\_\_\_

Elevation \_\_\_\_\_

Units  Metric  U.S. Survey Foot

Horizontal Datum \_\_\_\_\_

Zone \_\_\_\_\_ Epoch Date \_\_\_\_\_

Vertical Datum \_\_\_\_\_

 Complies with Public Resources Code §§8801-8819 Complies with Public Resources Code §§8890-8902PLS Act Ref:  8765(d)       8771       8773       Other:

Corner/Monument:  Left as found       Established       Rebuilt       Pre-Construction  
 Found and tagged       Reestablished       Referenced       Post-Construction

Narrative of corner identified and monument as found, set, reset, replaced, or removed:

 See sheet #2 for description(s) :

This corner record is being filed to establish the position of the County Monument marking the southwest corner of the southeast 1/4 of Section 34 Township 5 North, Range 5 East MDM as shown on 38 ROS 199 at the intersection of New Hope and Nowell Roads in unincorporated San Joaquin County, prior to gas line construction.

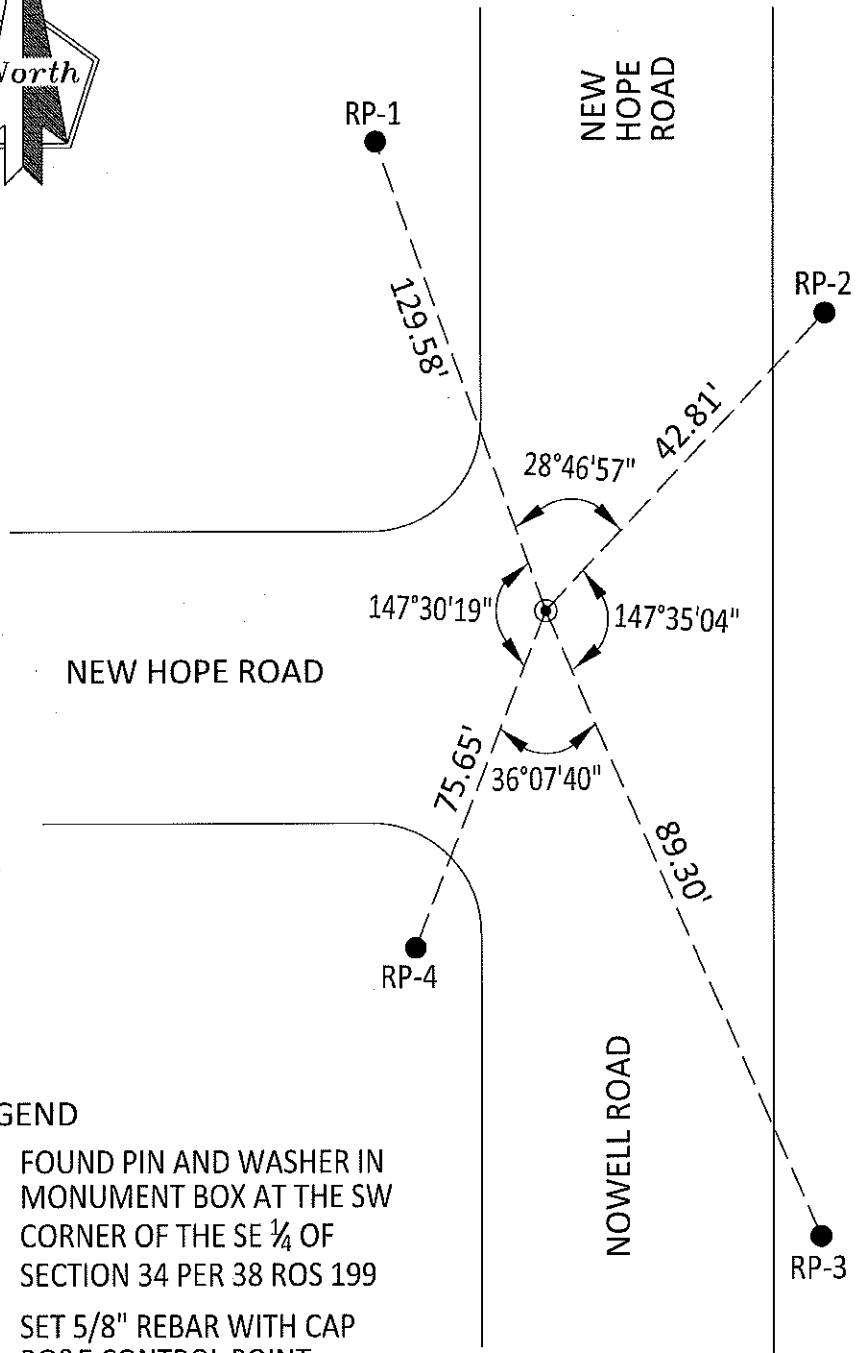
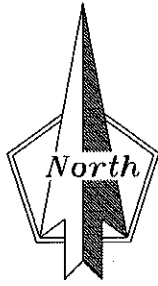
**SURVEYOR'S STATEMENT**

This Corner Record was prepared by me or under my direction in conformance with

the Professional Land Surveyors' Act on 3/21/2019Signed Timothy Kelly P.L.S. or R.C.E. No. L-7089**COUNTY SURVEYOR'S STATEMENT**This Corner Record was received March 28, 2019and examined and filed April 12, 2019Signed James E Hart P.L.S. or R.C.E. No. 8657Title County Surveyor

County Surveyor's Comment \_\_\_\_\_





LEGEND

- ⊙ FOUND PIN AND WASHER IN MONUMENT BOX AT THE SW CORNER OF THE SE ¼ OF SECTION 34 PER 38 ROS 199
- SET 5/8" REBAR WITH CAP PG&E CONTROL POINT

ROS RECORD OF SURVEY, SAN JOAQUIN COUNTY RECORDS

NOTE:

THE EXISTING MONUMENT AS SHOWN IS REFERENCED BY POINTS RP-1, RP-2, RP-3 AND RP-4