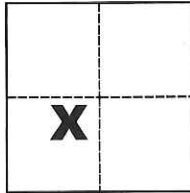


CORNER RECORD

Agency Index CR-19-32
 Document Number _____

City of _____ County of San Joaquin, California
 Brief Legal Description S.E. Cor. of Parcel "F" per R.S. 24-116, S.J.C.R.



Section 15, T.2N., R.8E.,
 M.D.B. & M.

CORNER TYPE

Government Corner Control
 Meander Property
 Rancho Other

Date of Survey February 12, 2019

COORDINATES (Optional)

N. _____ E. _____
 Elevation _____
 Units Metric U.S. Survey Foot
 Horizontal Datum _____
 Zone _____ Epoch Date _____
 Vertical Datum _____

Complies with Public Resources Code §§8801-8819
 Complies with Public Resources Code §§8890-8902

PLS Act Ref.: 8765(d) 8771 8773 Other:
 Corner/Monument: Left as found Established Rebuilt Pre-Construction
 Found and tagged Reestablished Referenced Post-Construction

Narrative of corner identified and monument as found, set, reset, replaced, or removed:

See sheet #2 for description(s):

SURVEYOR'S STATEMENT

This Corner Record was prepared by me or under my direction in conformance with
 the Professional Land Surveyors' Act on Mar. 12, 2019
 Signed Michael L. Quarataro P.L.S. or R.C.E. No. L.S. 4450



COUNTY SURVEYOR'S STATEMENT

This Corner Record was received March 13, 2019
 and examined and filed March 26, 2019
 Signed James E. Hart P.L.S. or R.C.E. No. 8657
 Title County Surveyor



County Surveyor's Comment

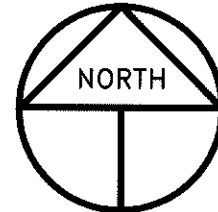
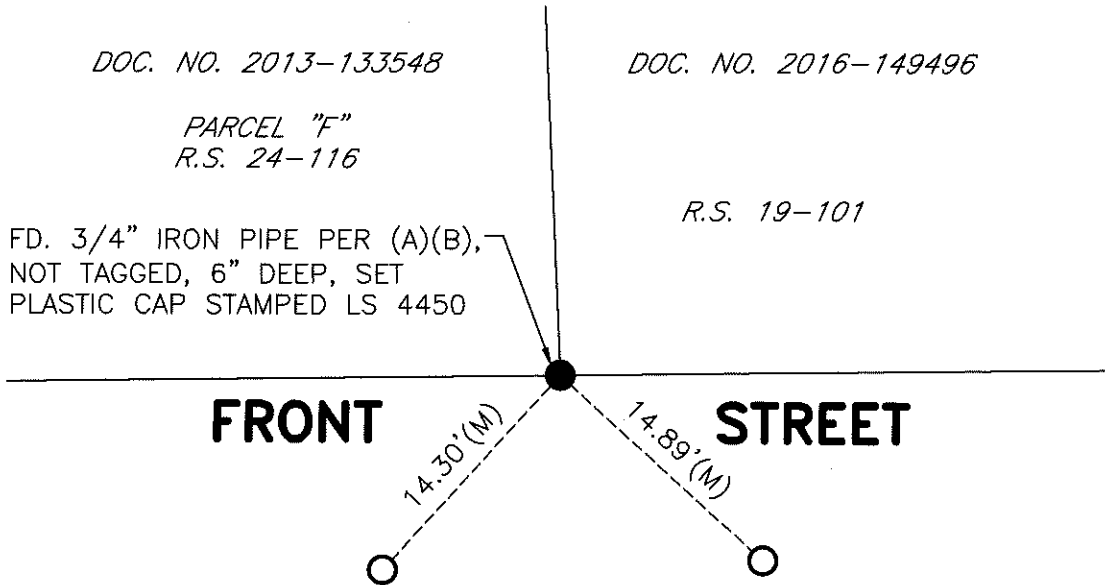
DOC. NO. 2013-133548

DOC. NO. 2016-149496

PARCEL "F"
R.S. 24-116

R.S. 19-101

FD. 3/4" IRON PIPE PER (A)(B),
NOT TAGGED, 6" DEEP, SET
PLASTIC CAP STAMPED LS 4450



SCALE: 1" = 10'
2019-34

REFERENCES

- (A) R.S. 19-101, S.J.C.R.
- (B) R.S. 24-116, S.J.C.R.

LEGEND

- INDICATES FOUND MONUMENT AS NOTED
- INDICATES SET CONCRETE NAIL W/TAG STAMPED LS 4450
- R.S. INDICATES RECORD OF SURVEY, BOOK AND PAGE, S.J.C.R.
- DOC. NO. INDICATES DOCUMENT NUMBER, S.J.C.R.
- S.J.C.R. INDICATES SAN JOAQUIN COUNTY RECORDS
- (M) INDICATES MEASURED ON THIS SURVEY