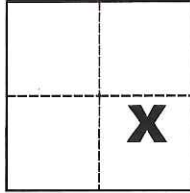


CORNER RECORD

Agency Index CR-19-30
Document Number _____

City of _____ County of San Joaquin, California
Brief Legal Description Parcel "1" & "2" per P.M. 17-186, S.J.C.R.



CORNER TYPE

Government Corner Control
Meander Property
Rancho Other

Date of Survey January 24, 2019

COORDINATES (Optional)

N. _____ E. _____

Elevation _____

Units Metric U.S. Survey Foot

Horizontal Datum _____

Zone _____ Epoch Date _____

Vertical Datum _____

Complies with Public Resources Code §§8801-8819

Complies with Public Resources Code §§8890-8902

Sec. 15, T.3S., R.5E.,
M.D.B. & M.

PLS Act Ref.: 8765(d) 8771 8773 Other:

Corner/Monument: Left as found Established Rebuilt Pre-Construction

Found and tagged Reestablished Referenced Post-Construction

Narrative of corner identified and monument as found, set, reset, replaced, or removed:

See sheet #2 for description(s):

SURVEYOR'S STATEMENT

This Corner Record was prepared by me or under my direction in conformance with

the Professional Land Surveyors' Act on Mar. 12, 2019

Signed Michael L. Quarantoni P.L.S. or R.C.E. No. L.S. 4450



COUNTY SURVEYOR'S STATEMENT

This Corner Record was received March 13, 2019

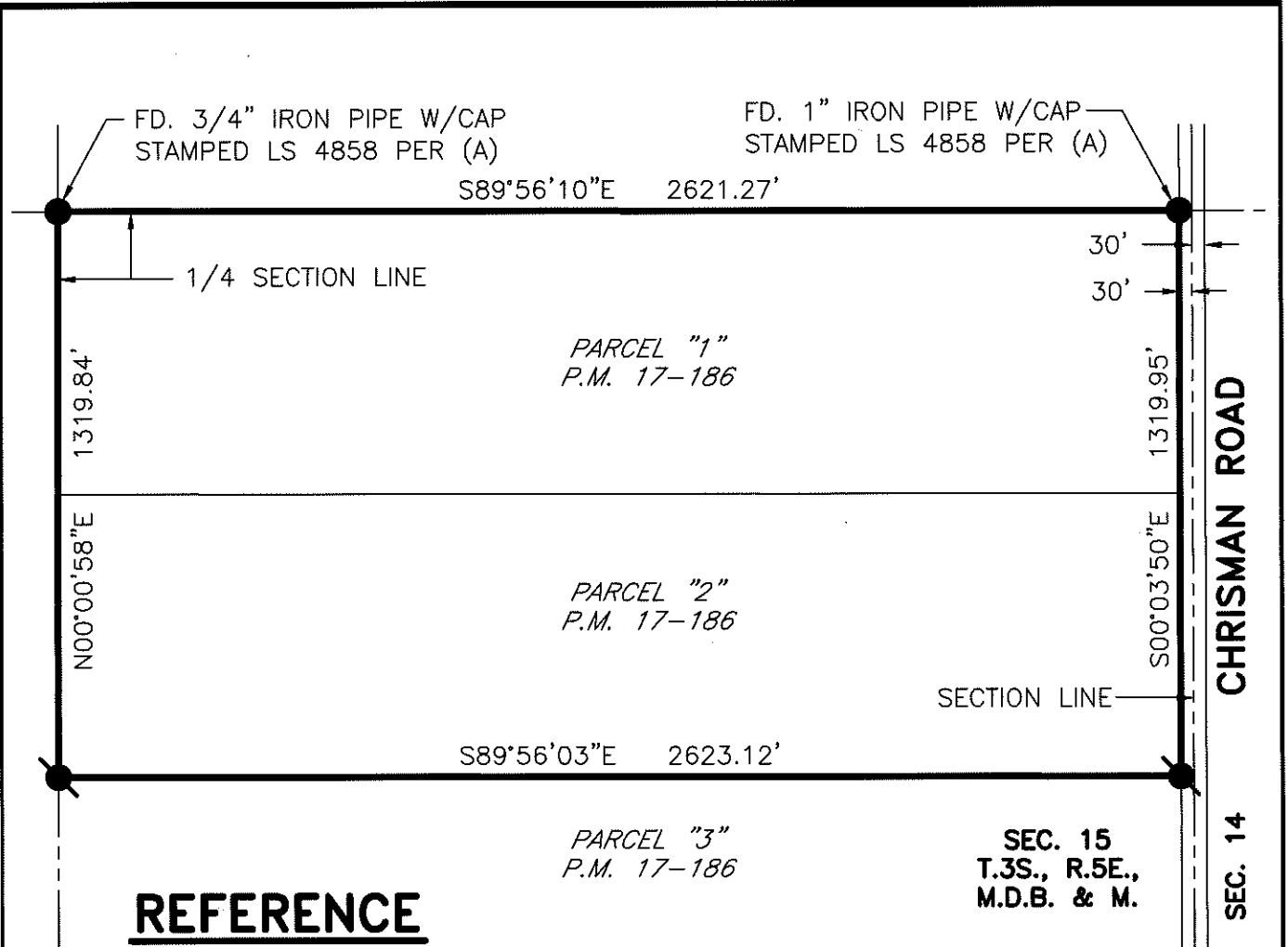
and examined and filed March 26, 2019

Signed James E. Hart P.L.S. or R.C.E. No. 8657

Title County Surveyor

County Surveyor's Comment



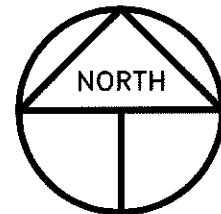


REFERENCE

(A) P.M. 17-186, S.J.C.R.

NOTE

ALL BEARINGS AND DISTANCES SHOWN ARE OF RECORD PER (A)



SCALE: 1" = 400'
2019-15

LEGEND

- INDICATES FOUND MONUMENT AS NOTED
- INDICATES FOUND 3/4" IRON PIPE PER (A), NOT CAPPED, SET TAG STAMPED LS 4450 ON TOP OF PIPE
- P.M. INDICATES PARCEL MAP, BOOK AND PAGE, S.J.C.R.
- S.J.C.R. INDICATES SAN JOAQUIN COUNTY RECORDS