

# CORNER RECORD

Agency Index CR-19-26

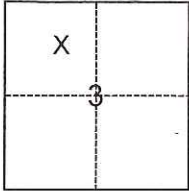
Document Number \_\_\_\_\_

City of Lodi County of San Joaquin, California

Brief Legal Description Southeast corner of APN 029-086-06 (Lot 54 of M.&P. 17-20)

### CORNER TYPE

### COORDINATES (Optional)



- Government Corner
- Meander
- Rancho
- Control
- Property
- Other

Date of Survey January 24, 2019

N. \_\_\_\_\_ E. \_\_\_\_\_

Elevation \_\_\_\_\_

Units  Metric  U.S. Survey Foot

Horizontal Datum \_\_\_\_\_

Zone \_\_\_\_\_ Epoch Date \_\_\_\_\_

Vertical Datum \_\_\_\_\_

Complies with Public Resources Code §§8801-8819

Complies with Public Resources Code §§8890-8902

PLS Act Ref.:  8765(d)  8771  8773  Other:

Corner/Monument:  Left as found  Established  Rebuilt  Pre-Construction

Found and tagged  Reestablished  Referenced  Post-Construction

Narrative of corner identified and monument as found, set, reset, replaced, or removed:

See sheet #2 for description(s):

### SURVEYOR'S STATEMENT

This Corner Record was prepared by me or under my direction in conformance with the Professional Land Surveyors' Act on February 19, 2019

Signed Joe Murphy P.L.S. or R.C.E. No. L.S. 7269



### COUNTY SURVEYOR'S STATEMENT

This Corner Record was received February 20, 2019 and examined and filed March 13, 2019

Signed James E. Hart P.L.S. or R.C.E. No. 8657

Title County Surveyor

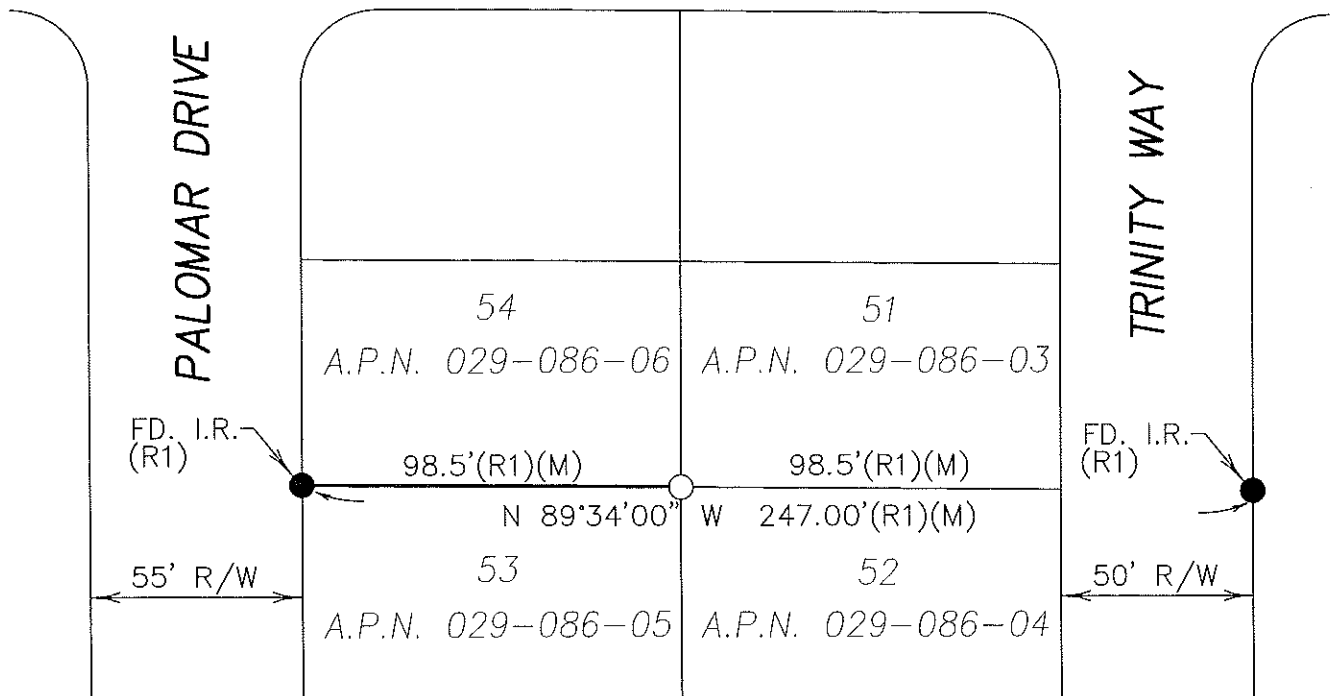
County Surveyor's Comment \_\_\_\_\_





N.T.S.

YOSEMITE DRIVE



**LEGEND**

- SET 3/4" X 30" I.R. CAPPED "L.S. 7269"
- FOUND MONUMENT AS NOTED
- FD. FOUND
- M.&P. MAPS AND PLATS
- (M) MEASURED
- R/W RIGHT-OF-WAY
- N.T.S. NOT TO SCALE
- REF. REFERENCE
- I.R. IRON ROD

**REFERENCES**

(R1) M.&P. 17-20