

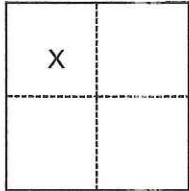
CORNER RECORD

Agency Index CR-19-18
Document Number _____

City of Manteca County of San Joaquin, California
Brief Legal Description Parcel 1 & Parcel 2 of Book 26 of Parcel Maps, Page 106

CORNER TYPE

COORDINATES (Optional)



- Government Corner
- Meander
- Rancho
- Control
- Property
- Other

Date of Survey November 4, 2018

N. _____ E. _____

Elevation _____

Units Metric U.S. Survey Foot

Horizontal Datum _____

Zone _____ Epoch Date _____

Vertical Datum _____

Complies with Public Resources Code §§8801-8819

Complies with Public Resources Code §§8890-8902

Section 4, T 2 S, R 7 E, MDM

PLS Act Ref.: 8765(d) 8771 8773 Other:

Corner/Monument: Left as found Established Rebuilt Pre-Construction
 Found and tagged Reestablished Referenced Post-Construction

Narrative of corner identified and monument as found, set, reset, replaced, or removed:

See sheet #2 for description(s):

SURVEYOR'S STATEMENT

This Corner Record was prepared by me or under my direction in conformance with
the Professional Land Surveyors' Act on January 20, 2019

Signed Kaiser Kelly P.L.S. or R.C.E. No. 8599



COUNTY SURVEYOR'S STATEMENT

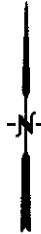
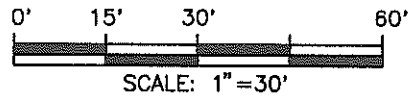
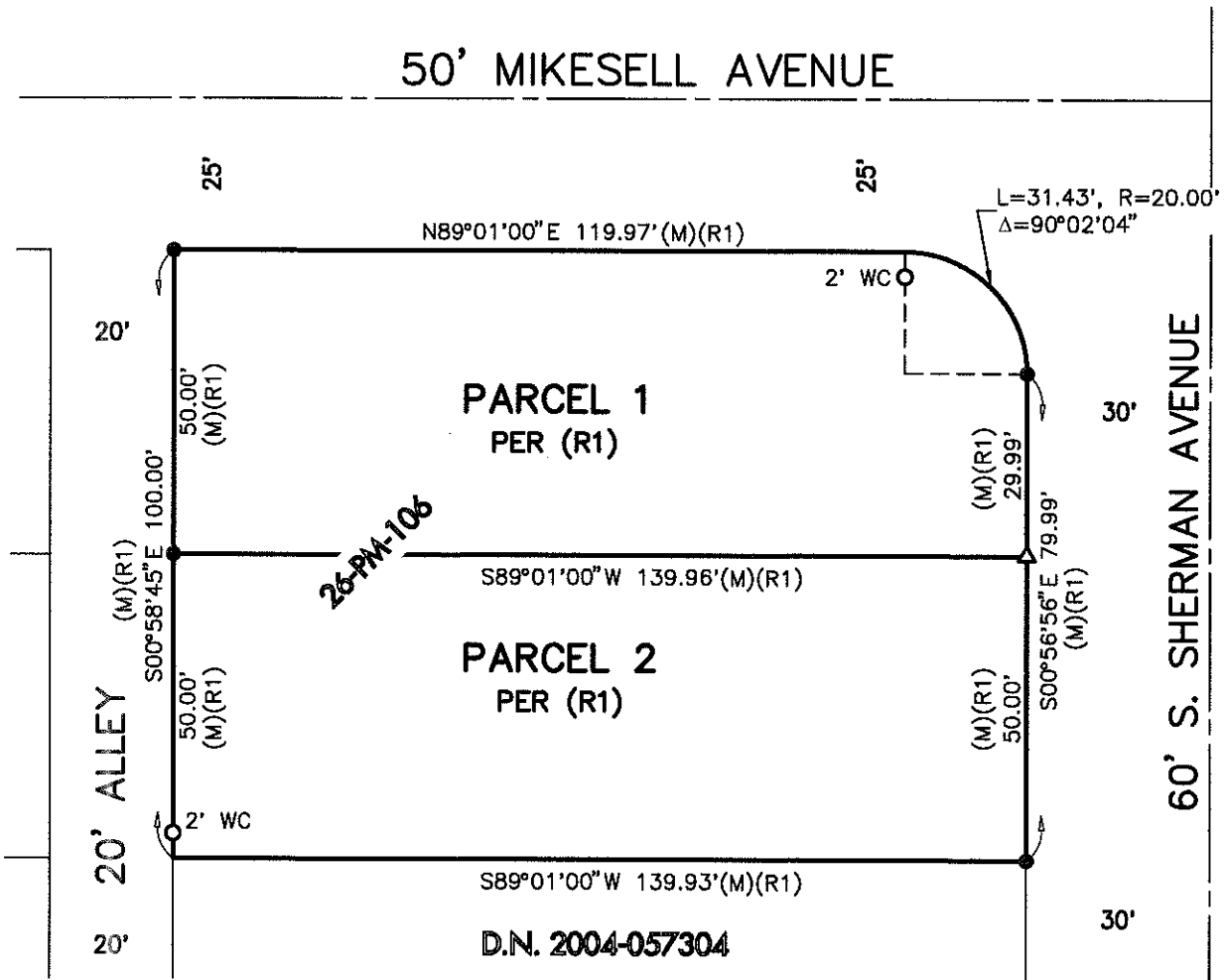
This Corner Record was received February 4, 2019
and examined and filed February 14, 2019

Signed James E. Hart P.L.S. or R.C.E. No. 8657

Title Acting County Surveyor

County Surveyor's Comment





LEGEND:

- FD 3/4"φ x 24" LONG PIPE TAGGED LS 8599 PER (R1)
- SET 3/4"φ x 24" LONG PIPE TAGGED LS 8599, 2' WC
- △ SET PK W/METAL TAG LS 8599 IN CONCRETE
- (M) MEASURED ON THIS SURVEY
- WC WITNESS CORNER
- SJCR SAN JOAQUIN COUNTY RECORDS

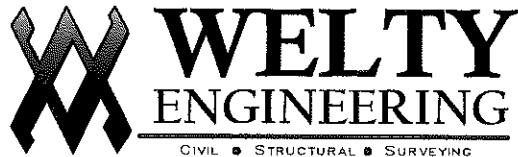
REFERENCES:

(R1) BOOK 26 OF PARCEL MAPS, PAGE 106, SJCR

BASIS OF BEARINGS (BOB):

BEING A COURSE OF NORTH 89°01'00" EAST FOR THE NORTH LINE OF SECTION 4, TOWNSHIP 2 SOUTH, RANGE 7 EAST, MOUNT DIABLO MERIDIAN, AS SHOWN ON BOOK 9 OF MAPS AND PLATS, PAGE 2, SAN JOAQUIN COUNTY RECORDS.

BEING A PORTION OF THE NORTHWEST QUARTER OF SECTION 4, TOWNSHIP 2 SOUTH, RANGE 7 EAST, MOUNT DIABLO MERIDIAN, CITY OF MANTECA, SAN JOAQUIN COUNTY, STATE OF CALIFORNIA.



521 13TH STREET,
 MODESTO, CA 95354
 PHONE- (209) 526-1515
 FAX- (209) 523-3383
 JOB NO. 13310, DATE: JANUARY 20, 2019