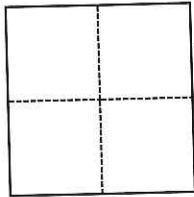


CORNER RECORD

Agency Index CR-19-17
 Document Number _____

City of Manteca County of San Joaquin, California
 Brief Legal Description Portion of East 1/2 of the SE. 1/4 of Section 34, T. 1 S., R. 7 E., M.D.M.



CORNER TYPE

- Government Corner Control
 Meander Property
 Rancho Other

Date of Survey December 21, 2018

COORDINATES (Optional)

N. _____ E. _____
 Elevation _____
 Units Metric U.S. Survey Foot
 Horizontal Datum _____
 Zone _____ Epoch Date _____
 Vertical Datum _____
 Complies with Public Resources Code §§8801-8819
 Complies with Public Resources Code §§8890-8902

PLS Act Ref.:

- 8765(d) 8771 8773 Other:

Corner/
Monument:

- Left as found Established Rebuilt Pre-Construction
 Found and tagged Reestablished Referenced Post-Construction

Narrative of corner identified and monument as found, set, reset, replaced, or removed:

See sheet #2 for description(s):

Monuments for the perimeter of Parcel 2, 17-PM-23, S.J.C.R. and illustrated on Survey filed in Book 33 of Surveys at Page 117, S.J.C.R. are adjacent to or within a construction project and found undisturbed and as shown on page 2 of 2 of this Corner Record.

SURVEYOR'S STATEMENT

This Corner Record was prepared by me or under my direction in conformance with

the Professional Land Surveyors' Act on January 29, 2019

Signed [Signature] P.L.S. or R.C.E. No. 7126



COUNTY SURVEYOR'S STATEMENT

This Corner Record was received January 31, 2019

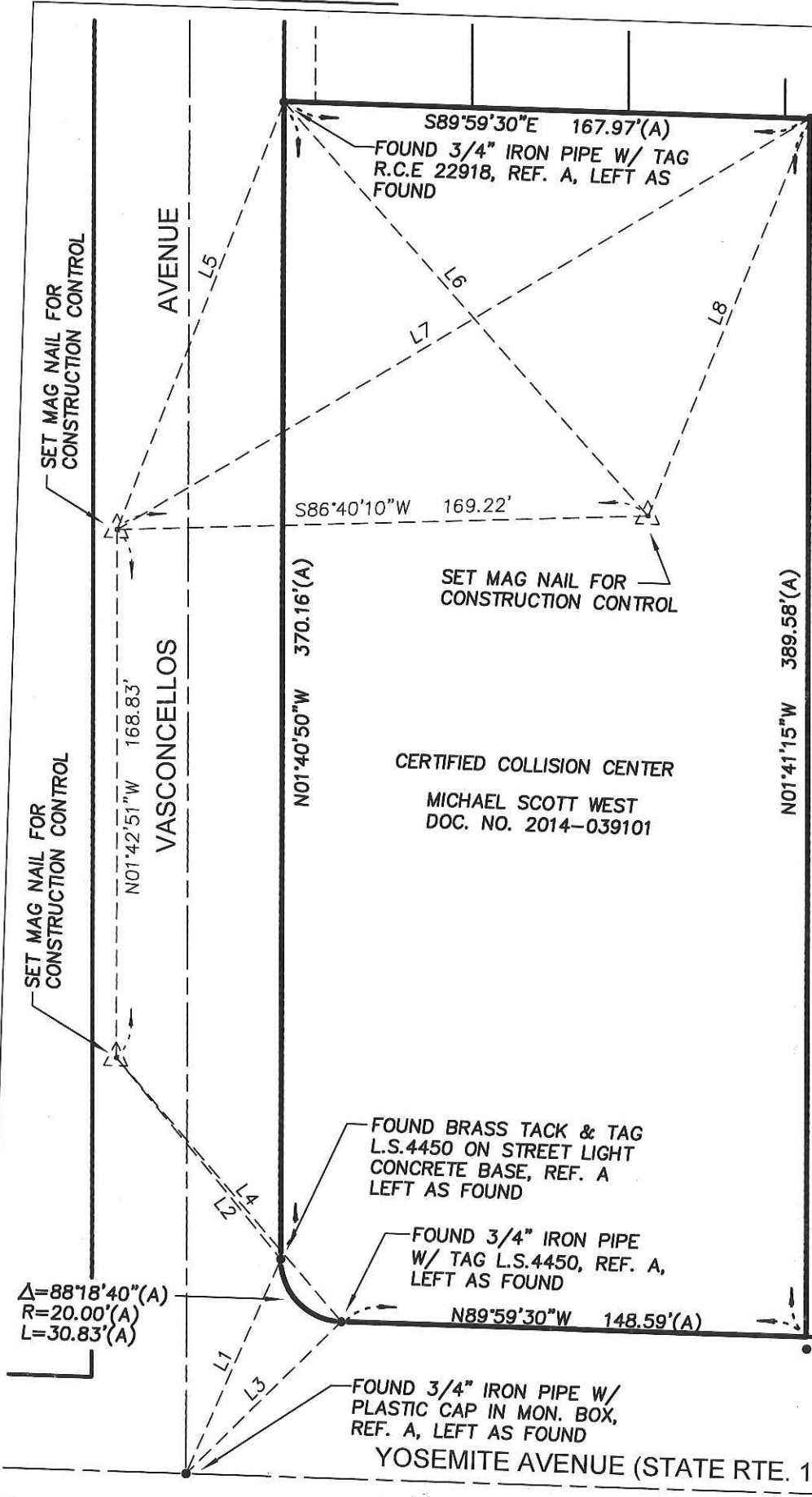
and examined and filed February 13, 2019

Signed [Signature] P.L.S. or R.C.E. No. 8657

Title Acting County Surveyor

County Surveyor's Comment _____





FOUND 3/4" IRON PIPE W/ TAG L.S.4450, REF. A, LEFT AS FOUND



NO SCALE

LEGEND:

- = MONUMENT FOUND UNDISTURBED AND IN ITS ORIGINAL LOCATION AS PER REFERENCE NOTED
- △ = SET MAG NAIL
- REF. A = 33-S-117, S.J.C.R.
- S.J.C.R. = SAN JOAQUIN COUNTY RECORDS

LINE TABLE		
LINE	BEARING	LENGTH
L1	N21°54'15"E	74.94'
L2	S40°53'26"E	82.91'
L3	N43°43'40"E	69.38'
L4	S42°08'36"E	110.69'
L5	N19°15'04"E	146.77'
L6	S43°07'05"E	176.36'
L7	N57°19'56"E	257.14'
L8	N20°13'56"E	137.45'



THE PURPOSE OF THIS CORNER RECORD IS TO MEET WITH THE INTENT OF PRE-CONSTRUCTION MONUMENT PRESERVATION PURSUANT TO SEC. 8771(B) OF PLS ACT. NO ATTEMPT WAS MADE AS TO THE MONUMENTS POSITIONAL ACCURACY PURSUANT TO THE NOTED REFERENCE.

FOUND BRASS TACK & TAG L.S.4450 AS WITNESS CORNER S.01°41'15"E. - 4.00' FROM PROPERTY CORNER, REF. A LEFT AS FOUND

YOSEMITE AVENUE (STATE RTE. 120)

PRE-CONSTRUCTION