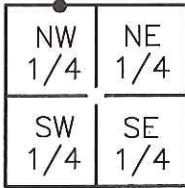


CORNER RECORD

Agency Index: CR-19-14
Document Number: _____
County of SAN JOAQUIN, California

City of TRACY
Brief Legal Description MONUMENT AT ELEVENTH STREET AND MACARTHUR DRIVE
LOCATED ON THE APPARENT SECTION LINE BETWEEN SECTIONS 22 AND 27, T.2S, R.5E, M.D.B.&M.



SEC. 27
T.2S, R.5E

CORNER TYPE

Government Corner Control
Meander Property
Rancho Other

Date of Survey 5-1-2018

COORDINATES (Optional)

N. _____ E. _____
Elevation: _____
Units Metric U.S. Survey Foot
Horizontal Datum: NVGD88
Zone: _____ Epoch Date: _____
Vert. Datum: _____

Complies with Public Resources Code SS8801-8819
 Complies with Public Resources Code SS8890-8902

PLS Act Ref: 8765(d) 8771 8773 Other:

Corner/Monument: Left as found Established Rebuilt Pre-Construction
 Found and Tagged Reestablished Referenced Post-Construction

Narrative of corner identified and monument as found, set, reset, replaced, or removed:

See sheet #2 for description(s):

SET MONUMENT AS SHOWN ON PAGE 2.

MONUMENT SET AS DESCRIBED ON PAGE 2.

SURVEYOR'S STATEMENT

This Corner Record was prepared by me or under my direction in conformance with the Land Surveyors' Act on OCTOBER 8, 2018,

Signed [Signature] P.L.S. or R.C.E. Number 6953

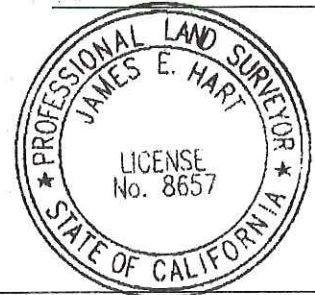


COUNTY SURVEYOR'S STATEMENT

This Corner Record was received January 24, 2019
and examined and filed February 8, 2019

Signed James E. Hart P.L.S. or R.C.E. No: 8657
Title Acting County Surveyor

County Surveyor's Comment _____



LEGEND:

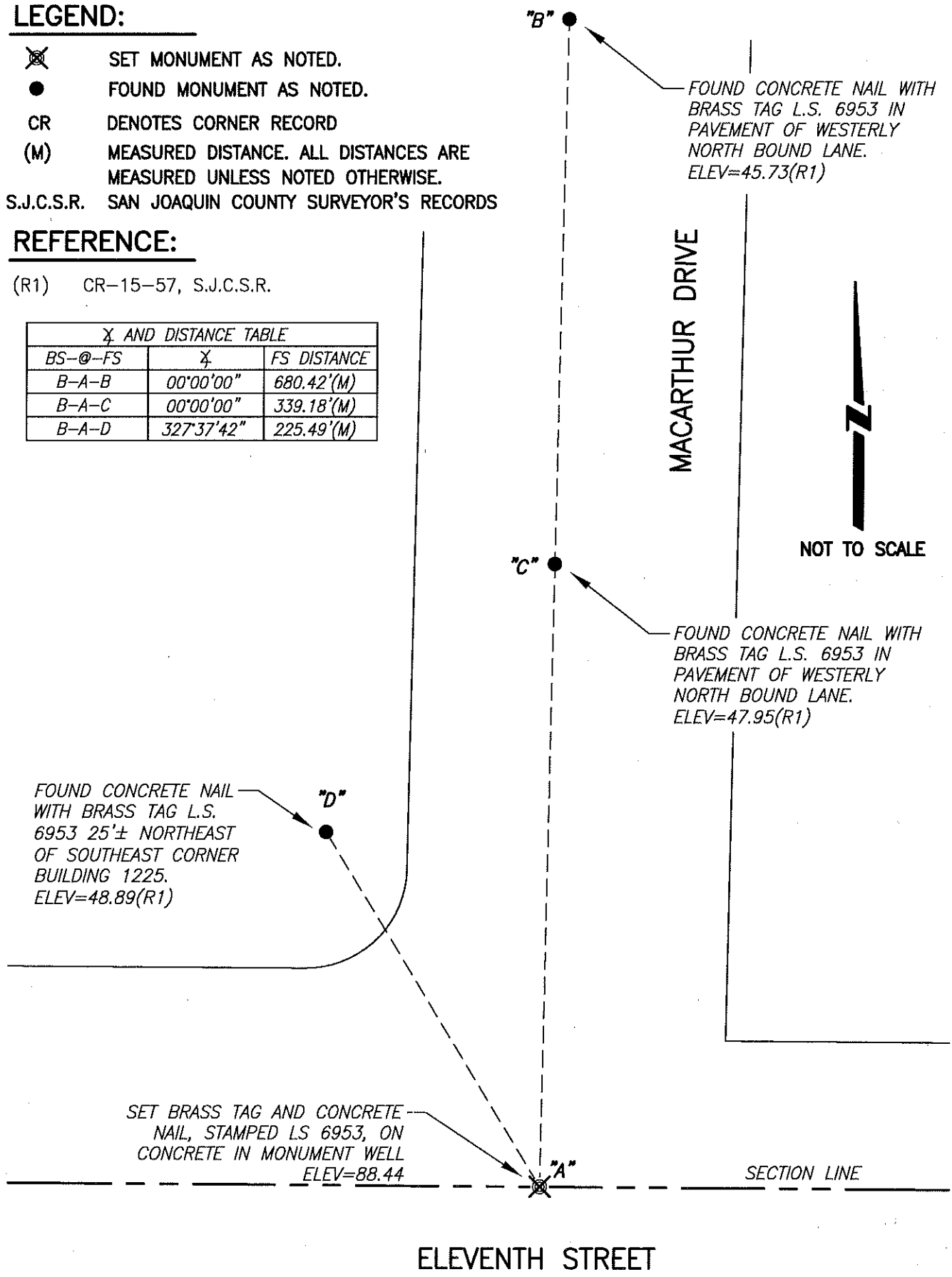
- ⊗ SET MONUMENT AS NOTED.
- FOUND MONUMENT AS NOTED.
- CR DENOTES CORNER RECORD
- (M) MEASURED DISTANCE. ALL DISTANCES ARE MEASURED UNLESS NOTED OTHERWISE.

S.J.C.S.R. SAN JOAQUIN COUNTY SURVEYOR'S RECORDS

REFERENCE:

(R1) CR-15-57, S.J.C.S.R.

X AND DISTANCE TABLE		
BS-@-FS	X	FS DISTANCE
B-A-B	00°00'00"	680.42'(M)
B-A-C	00°00'00"	339.18'(M)
B-A-D	327°37'42"	225.49'(M)



FOUND CONCRETE NAIL WITH BRASS TAG L.S. 6953 25'± NORTHEAST OF SOUTHEAST CORNER BUILDING 1225. ELEV=48.89(R1)

FOUND CONCRETE NAIL WITH BRASS TAG L.S. 6953 IN PAVEMENT OF WESTERLY NORTH BOUND LANE. ELEV=45.73(R1)

FOUND CONCRETE NAIL WITH BRASS TAG L.S. 6953 IN PAVEMENT OF WESTERLY NORTH BOUND LANE. ELEV=47.95(R1)

SET BRASS TAG AND CONCRETE NAIL, STAMPED LS 6953, ON CONCRETE IN MONUMENT WELL ELEV=88.44

SECTION LINE

ELEVENTH STREET