

CORNER RECORD

Agency Index CR-19-13

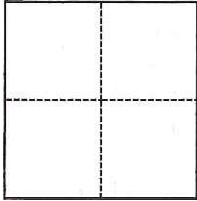
Document Number _____

City of STOCKTON County of SAN JOAQUIN, California

Brief Legal Description PARCEL "A" PER P.M. 12-199, SAN JOAQUIN COUNTY RECORDS

CORNER TYPE

COORDINATES (Optional)



- Government Corner
- Meander
- Rancho
- Control
- Property
- Other

N. _____ E. _____

Elevation _____

Units Metric U.S. Survey Foot

Horizontal Datum _____

Zone _____ Epoch Date _____

Date of Survey NOVEMBER 1, 2018

Vertical Datum _____

Complies with Public Resources Code §§8801-8819

Complies with Public Resources Code §§8890-8902

PLS Act Ref.:

8765(d)

8771

8773

Other:

Corner/
Monument:

Left as found

Established

Rebuilt

Pre-Construction

Found and tagged

Reestablished

Referenced

Post-Construction

Narrative of corner identified and monument as found, set, reset, replaced, or removed:

See sheet #2 for description(s):

REESTABLISHED PROPERTY CORNERS ON EAST LINE OF PARCEL "A" PER BOOK 12 OF PARCEL MAPS, PAGE 199.

REPLACED MONUMENTS AS SHOWN ON ATTACHED PLAT.

SURVEYOR'S STATEMENT

This Corner Record was prepared by me or under my direction in conformance with

the Professional Land Surveyors' Act on January 22, 2019

Signed Zachary C. Wong P.L.S. or R.C.E. No. 7600



COUNTY SURVEYOR'S STATEMENT

This Corner Record was received January 22, 2019

and examined and filed February 11, 2019

Signed James E. Hart P.L.S. or R.C.E. No. 8657

Title Acting County Surveyor

County Surveyor's Comment _____

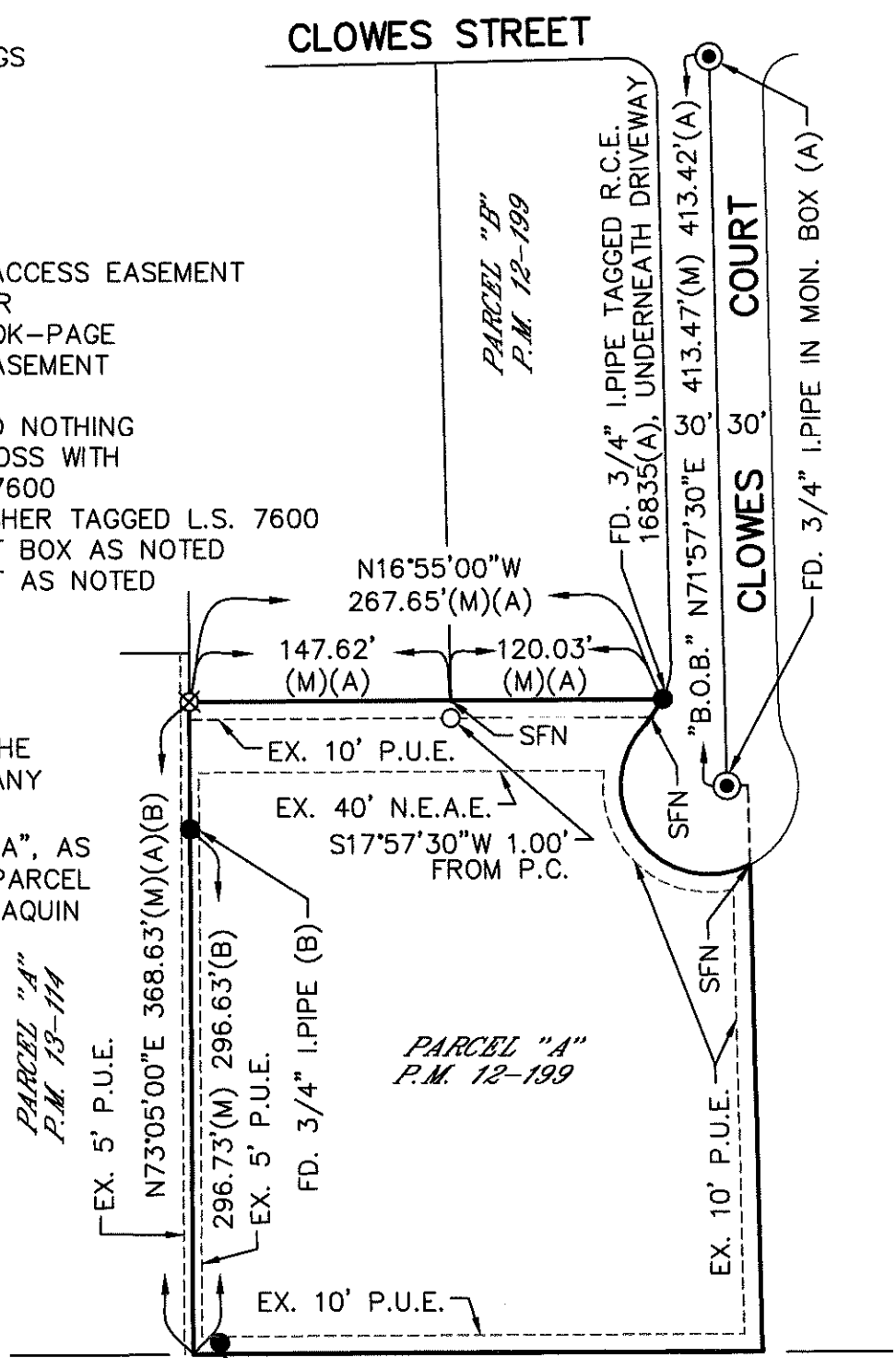


LEGEND:

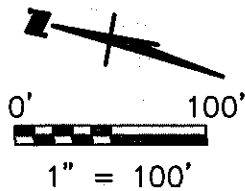
- B.O.B. BASIS OF BEARINGS
- COR. CORNER
- EX. EXISTING
- FD. FOUND
- I. IRON
- M MEASURED
- MON. MONUMENT
- N.E.A.E. NON-EXCLUSIVE ACCESS EASEMENT
- P.C. PROPERTY CORNER
- P.M. PARCEL MAP, BOOK-PAGE
- P.U.E. PUBLIC UTILITY EASEMENT
- REF. REFERENCE
- SFN SEARCHED, FOUND NOTHING
- ⊗ SET CHISELED CROSS WITH BRASS TAG L.S. 7600
- SET PK WITH WASHER TAGGED L.S. 7600
- ⊙ FOUND MONUMENT BOX AS NOTED
- FOUND MONUMENT AS NOTED

DESCRIPTION:

THIS DOCUMENT IS FOR THE PURPOSE OF RESETTING ANY MISSING OR OBLITERATED CORNERS FROM PARCEL "A", AS SHOWN ON BOOK 12 OF PARCEL MAPS, PAGE 199, SAN JOAQUIN COUNTY RECORDS.



FD. 3/4" I.P.I.P.E., NO TAG (B)
S21°26'29"E 0.09' FROM P.C.



WONG ENGINEERS, INC.
 PLANNING ENGINEERING SURVEYING
 4578 FEATHER RIVER DRIVE, SUITE A
 STOCKTON, CALIFORNIA (209) 476-0011
 JANUARY 22, 2019

REFERENCE:
 (A) P.M. 12-199
 (B) P.M. 13-114