

CORNER RECORD

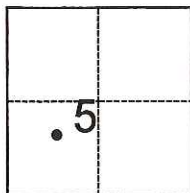
Agency Index

CR-19-11

Document Number

City of _____ County of San Joaquin, California

Brief Legal Description _____ A.P.N. 086-500- 11

CORNER TYPE**COORDINATES (Optional)**

- ☐ Government Corner ☐ Control
☐ Meander ☒ Property
☐ Rancho ☐ Other

Date of Survey August 3, 2018

N. _____ E. _____

Elevation _____

Units ☐ Metric ☒ U.S. Survey Foot

Horizontal Datum _____

Zone _____ Epoch Date _____

Vertical Datum _____

☐ Complies with Public Resources Code §§8801-8819☐ Complies with Public Resources Code §§8890-8902

T.2N., R.7E., M.D.B.&M.

PLS Act Ref.:

☒ 8765(d)☐ 8771☐ 8773☐ Other:Corner/
Monument:☐ Left as found☐ Established☐ Rebuilt☐ Pre-Construction☐ Found and tagged☒ Reestablished☐ Referenced☐ Post-Construction

Narrative of corner identified and monument as found, set, reset, replaced, or removed:

☒ See sheet #2 for description(s):**SURVEYOR'S STATEMENT**

This Corner Record was prepared by me or under my direction in conformance with

the Professional Land Surveyors' Act on January 18, 2019

Signed

(P.L.S.) or R.C.E. No.

L.S. 7269

**COUNTY SURVEYOR'S STATEMENT**

This Corner Record was received

January 18, 2019

and examined and filed

February 11, 2019

Signed

P.L.S. or R.C.E. No.

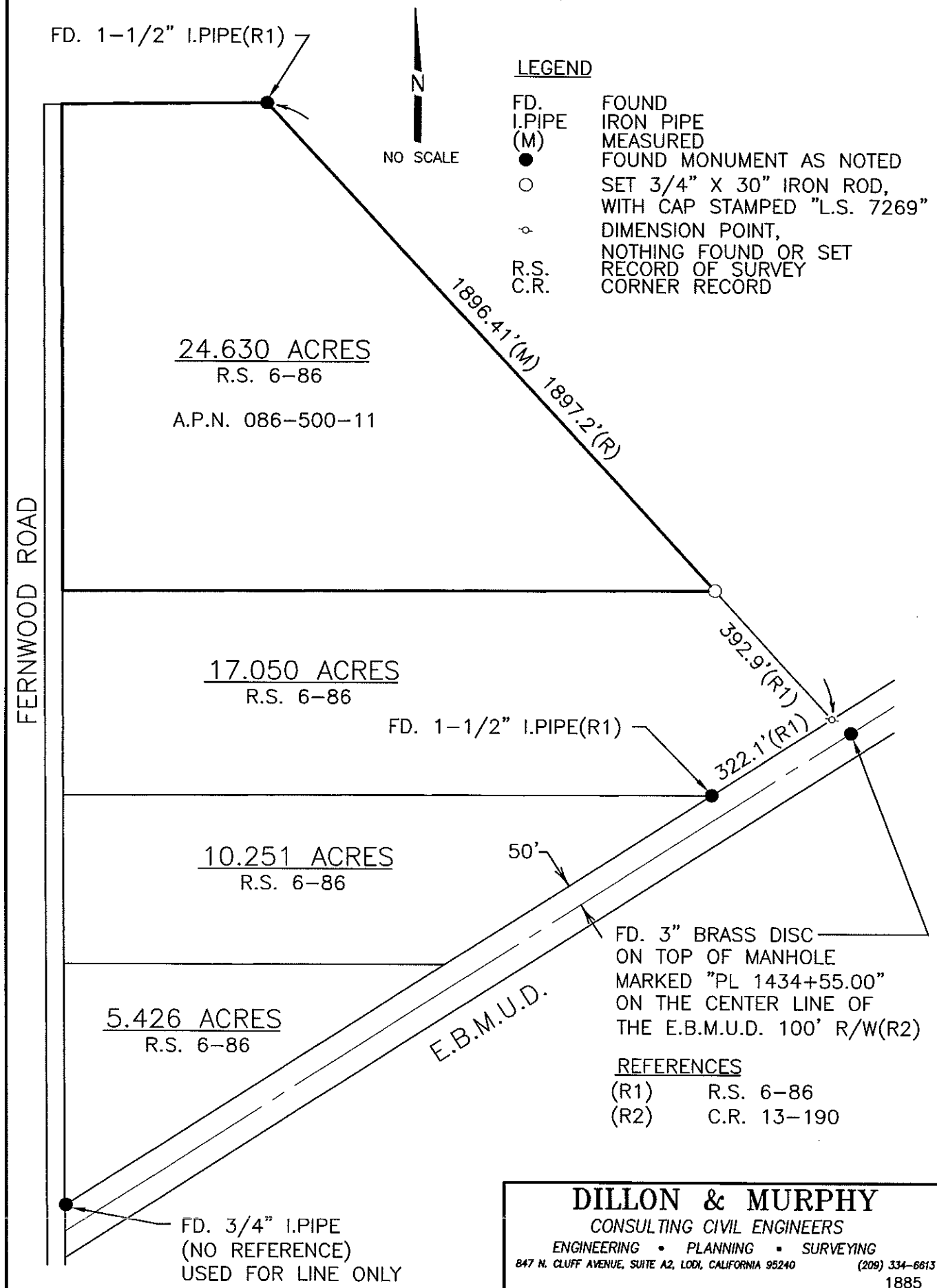
8657

Title

Acting County Surveyor

County Surveyor's Comment





S:\2018\1885\Boundary.dwg Jan 18, 2019