

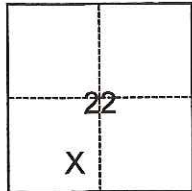
# CORNER RECORD

Agency Index CR-19-10  
 Document Number \_\_\_\_\_

City of \_\_\_\_\_ County of San Joaquin, California  
 Brief Legal Description \_\_\_\_\_ APN: 017-300-17

### CORNER TYPE

### COORDINATES (Optional)



- Government Corner     Control  
 Meander                     Property  
 Rancho                          Other

N. \_\_\_\_\_ E. \_\_\_\_\_  
 Elevation \_\_\_\_\_  
 Units     Metric             U.S. Survey Foot  
 Horizontal Datum \_\_\_\_\_  
 Zone \_\_\_\_\_ Epoch Date \_\_\_\_\_  
 Vertical Datum \_\_\_\_\_  
 Complies with Public Resources Code §§8801-8819  
 Complies with Public Resources Code §§8890-8902

Date of Survey October 6, 2018

T. 4 N., R. 7 E., M.D.B.&M.

PLS Act Ref.:     8765(d)             8771             8773             Other:  
 Corner/  
 Monument:     Left as found             Established             Rebuilt             Pre-Construction  
                    Found and tagged         Reestablished         Referenced         Post-Construction

Narrative of corner identified and monument as found, set, reset, replaced, or removed:  
 See sheet #2 for description(s):

### SURVEYOR'S STATEMENT

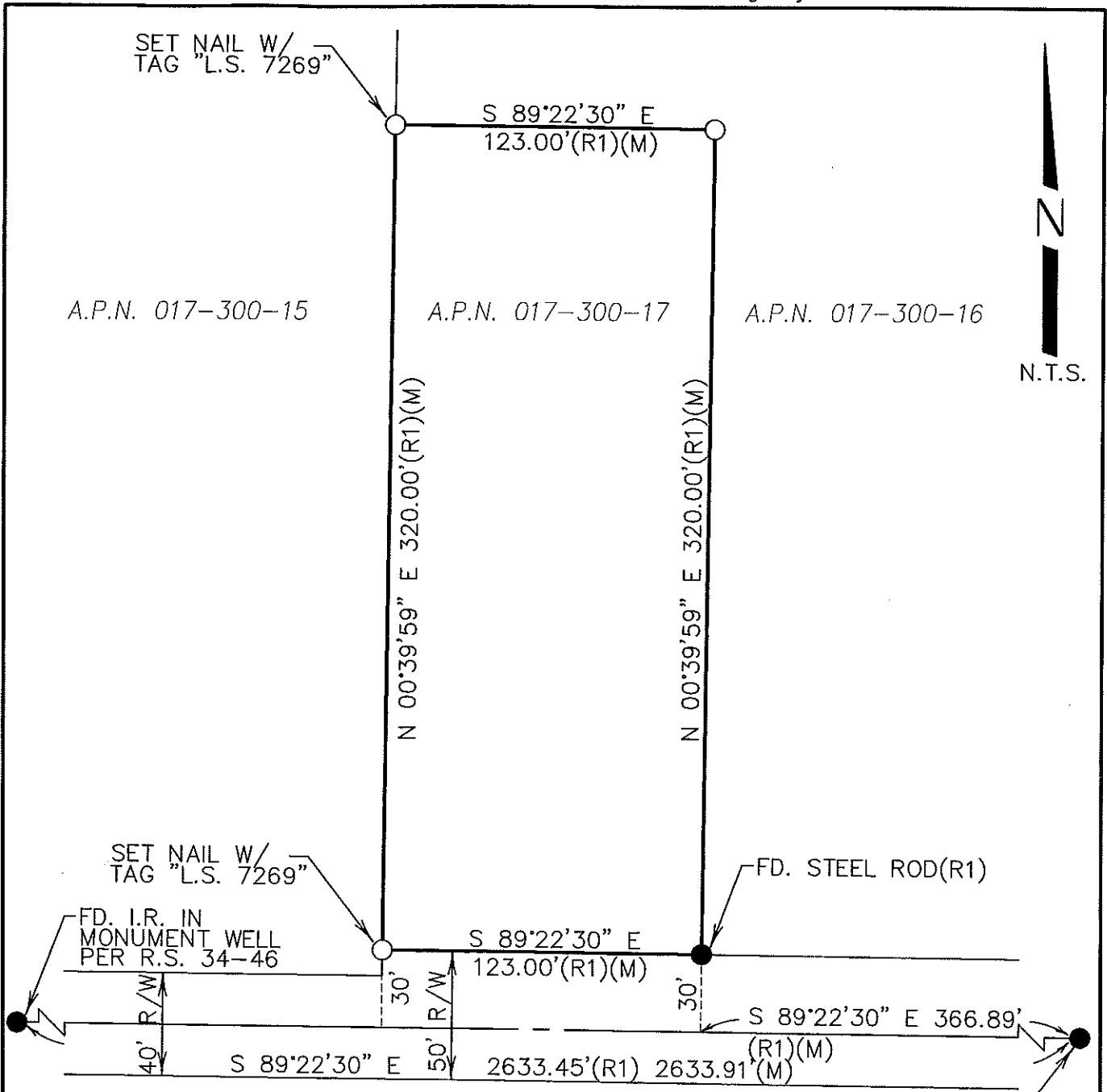
This Corner Record was prepared by me or under my direction in conformance with  
 the Professional Land Surveyors' Act on January 18, 2019  
 Signed Joe Murphy P.L.S. or R.C.E. No. L.S. 7269



### COUNTY SURVEYOR'S STATEMENT

This Corner Record was received January 18, 2019  
 and examined and filed February 11, 2019  
 Signed James E. Hart P.L.S. or R.C.E. No. 8657  
 Title Acting County Surveyor  
 County Surveyor's Comment \_\_\_\_\_





**LEGEND**

- SET 3/4" X 30" I.R. CAPPED "L.S. 7269"  
UNLESS NOTED
- FOUND MONUMENT AS NOTED
- FD. FOUND
- P.M. PARCEL MAP
- (M) MEASURED
- R/W RIGHT-OF-WAY
- N.T.S. NOT TO SCALE
- REF. REFERENCE
- I.R. IRON ROD
- C.R. CORNER RECORD
- R.S. RECORD OF SURVEY

**REFERENCES**

(R1) R.S. 15-170