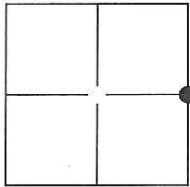


CORNER RECORD

Agency Index: CR-19-04

Document Number: _____

City of MANTECACounty of SAN JOAQUIN, CaliforniaBrief Legal Description MONUMENTS ALONG THE CENTERLINE OF SOUTHLAND ROAD LOCATED IN THE EAST HALF OF SECTION 28, T.1S, R.7E, M.D.B.&MSEC. 28
T.1S, R.7E**CORNER TYPE**
 Government Corner Control
 Meander Property
 Rancho Other
Date of Survey 2-12-2018**COORDINATES (Optional)**

N. _____ E. _____

Elevation: _____

Units Metric U.S. Survey Foot

Horizontal Datum: _____

Zone: _____ Epoch Date: _____

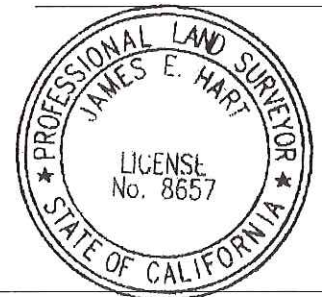
Vert. Datum: _____

 Complies with Public Resources Code SS8801-8819
 Complies with Public Resources Code SS8890-8902
PLS Act Ref: 8765(d) 8771 8773 Other:
 Corner/Monument: Left as found Established Rebuilt Pre-Construction
 Found and Tagged Reestablished Referenced Post-Construction

Narrative of corner identified and monument as found, set, reset, replaced, or removed:

 See sheet #2 for description(s):
FOUND 2" IRON PIPE IN MONUMENT WELL AT THE CENTERLINE INTERSECTION OF COTTAGE AVE & SOUTHLAND RD. PER 37-S-168, S.J.C.R. FOUND MAG NAIL PER CR 12-64, S.J.C.S.R., NOT TAGGED, 658.85' TO THE WEST OF SAID INTERSECTION.
SET THREE (3) CONCRETE NAILS WITH BRASS TAG "LS 6953" AS WITNESS CORNERS, ALL AS SHOWN ON PAGE 2.
SURVEYOR'S STATEMENT
 This Corner Record was prepared by me or under my direction in conformance with the Land Surveyors' Act on OCTOBER 05, 2018,
Signed [Signature] P.L.S. or R.C.E. Number 6953**COUNTY SURVEYOR'S STATEMENT**This Corner Record was received January 7, 2019and examined and filed January 16, 2019Signed James E. Hart P.L.S. or R.C.E. No: 8657Title Acting County Surveyor

County Surveyor's Comment _____

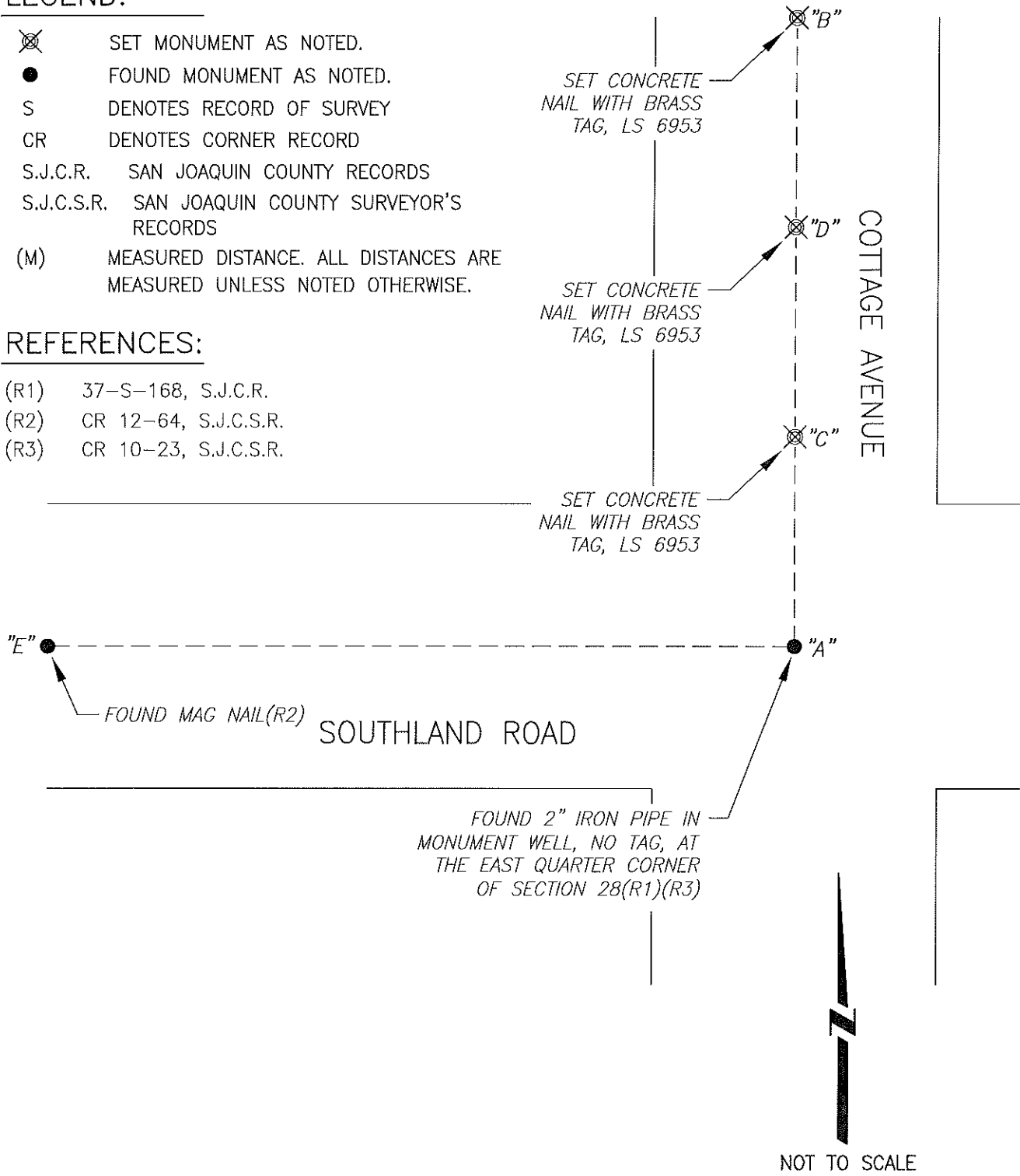


LEGEND:

- ⊗ SET MONUMENT AS NOTED.
- FOUND MONUMENT AS NOTED.
- S DENOTES RECORD OF SURVEY
- CR DENOTES CORNER RECORD
- S.J.C.R. SAN JOAQUIN COUNTY RECORDS
- S.J.C.S.R. SAN JOAQUIN COUNTY SURVEYOR'S RECORDS
- (M) MEASURED DISTANCE. ALL DISTANCES ARE MEASURED UNLESS NOTED OTHERWISE.

REFERENCES:

- (R1) 37-S-168, S.J.C.R.
- (R2) CR 12-64, S.J.C.S.R.
- (R3) CR 10-23, S.J.C.S.R.



⊗ AND DISTANCE TABLE

<i>BS-@-FS</i>	<i>⊗</i>	<i>FS DISTANCE</i>
<i>B-A-B</i>	<i>00°00'00"</i>	<i>684.12'(M)</i>
<i>B-A-C</i>	<i>00°00'00"</i>	<i>227.12'(M)</i>
<i>B-A-D</i>	<i>00°00'00"</i>	<i>453.24'(M)</i>
<i>B-A-E</i>	<i>270°20'26"</i>	<i>658.85'(M)</i>