

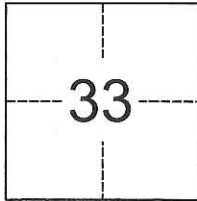
CORNER RECORD

Agency Index CR-18-189

Document Number _____

City of _____ County of San Joaquin, California

Brief Legal Description _____ R.S. 36-30

CORNER TYPE**COORDINATES (Optional)**

Government Corner Control
 Meander Property
 Rancho Other

N. _____ E. _____

Elevation _____

Units Metric U.S. Survey Foot

Horizontal Datum _____

Zone _____ Epoch Date _____

Date of Survey August 10, 2018

Vertical Datum _____

T.5N., R.5E., M.D.B. & M.

 Complies with Public Resources Code §§8801-8819 Complies with Public Resources Code §§8890-8902

PLS Act Ref.: 8765(d) 8771 8773 Other:
 Corner/Monument: Left as found Established Rebuilt Pre-Construction
 Found and tagged Reestablished Referenced Post-Construction

Narrative of corner identified and monument as found, set, reset, replaced, or removed:

 See sheet #2 for description(s):

It is the purpose of this corner record to establish and reestablish monuments per R.S. 36-30 that were found missing.

SURVEYOR'S STATEMENT

This Corner Record was prepared by me or under my direction in conformance with

the Professional Land Surveyors' Act on August 10, 2018Signed [Signature] P.L.S. or R.C.E. No. 7889**COUNTY SURVEYOR'S STATEMENT**This Corner Record was received January 3, 2019and examined and filed January 14, 2019Signed [Signature] P.L.S. or R.C.E. No. 8657Title Acting County Surveyor

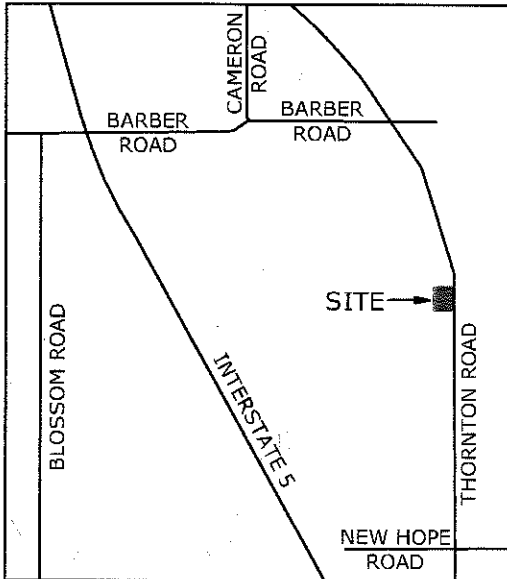
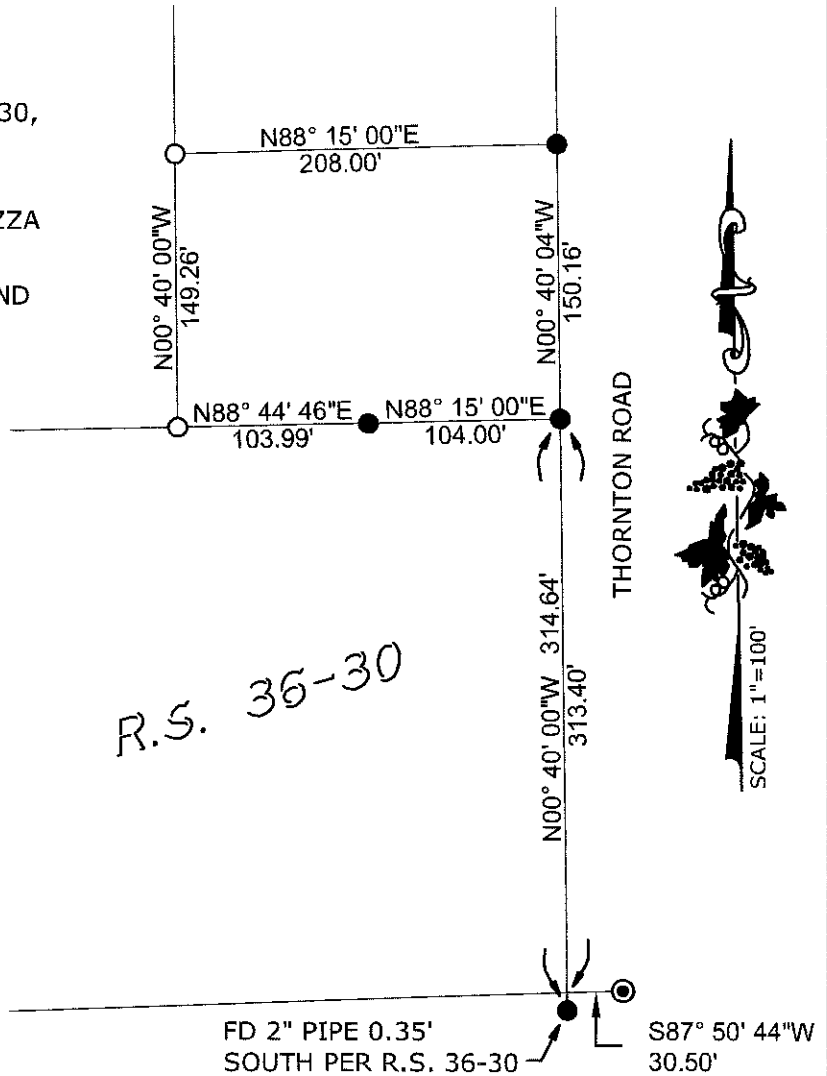
County Surveyor's Comment _____



LEGEND:

- FD. 3/4" IRON ROD, CAPPED AND STAMPED RCE 19638 PER R.S. 36-30, UNLESS OTHERWISE NOTED
- SET 3/4"x30" IRON ROD, CAPPED AND STAMPED "BAUMBACH & PIAZZA ELSON PLS 7889"
- ⊙ FD SAN JOAQUIN COUNTY BOLT AND WASHER IN MONUMENT BOX PER R.S. 29-50

R.S. RECORD OF SURVEY



VICINITY MAP

No Scale

- Notes:
1. Monuments are not tagged unless noted.
 2. No attempt was made to verify the monument(s)

PREPARED IN THE OFFICE OF:

BAUMBACH & PIAZZA, INC.

CIVIL ENGINEERS • SURVEYORS

www.bpengineers.net

323 W. Elm St.

209.368.6618

Lodi, CA 95240

