

CORNER RECORD

Agency Index CR-18-188

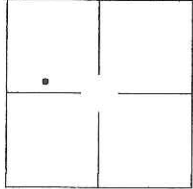
Document Number _____

City of STOCKTON

County of SAN JOAQUIN, California

Brief Legal Description MONUMENTS AS SHOWN ON PM 21-19, S.J.C.R.

CORNER TYPE



T2N/R6E

SEC. 17

- Government Corner Control
- Meander Property
- Rancho Other

Date of Survey 2018-11-07

COORDINATES (Optional)

- N. _____ E. _____
- Elevation _____
- Units Metric U.S. Survey Foot
- Horizontal Datum _____
- Zone _____ Epoch Date _____
- Vertical Datum: _____
- Complies with Public Resources Code §§8801-8819
- Complies with Public Resources Code §§8890-8902

PLS Act Ref.: 8765(d) 8771 8773 Other: _____

Corner/Monument: Left as found Established Rebuilt Pre-Construction
 Found and tagged Reestablished Referenced Post-Construction

Narrative of corner identified and monument as found, set, reset, replaced, or removed:
 See sheet #2 for description(s):

MONUMENTS SET AROUND PARCEL 4 AS SHOWN ON THE PARCEL MAP FILED IN BOOK 21 OF PARCEL MAPS, AT PAGE 19, SAN JOAQUIN COUNTY RECORDS, SHOWN ON SHEET 2.

SURVEYOR'S STATEMENT

This Corner Record was prepared by me or under my direction in conformance with the Professional Land Surveyor's Act on NOVEMBER 30TH, 2018.

Signed [Signature] P.L.S. or R.C.E. No.: PLS 8366



COUNTY SURVEYOR'S STATEMENT

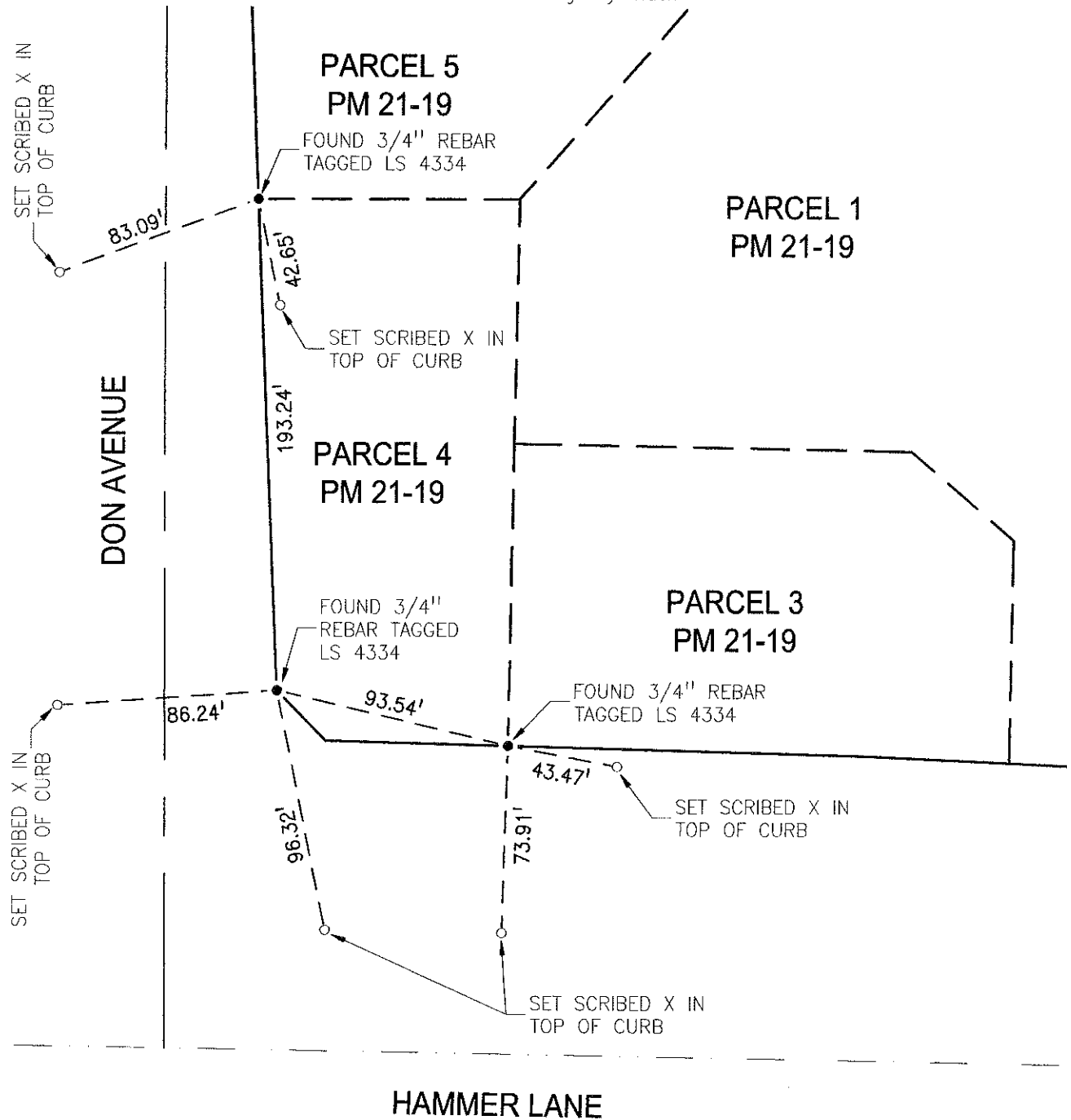
This Corner Record was received December 3, 2018 and examined and filed December 28, 2018.

Signed James E. Hart P.L.S. or R.C.E. No.: 8657

Title Acting County Surveyor

County Surveyor's Comment _____





NOTES:

1. THE FOUND MONUMENTS ARE SHOWN IN THE POSITIONS AS FOUND. NO ATTEMPT WAS MADE TO ESTABLISH THE VALIDITY OF THEIR POSITIONS IN RELATION TO BOUNDARY LINES, RIGHTS-OF-WAY, OR OTHER RECORD POSITIONS.

