

CORNER RECORD

Agency Index CR-18-186
Document Number _____
County of SAN JOAQUIN, California

City of MANTECA

Brief Legal Description MONUMENT PRESERVATION FOR A PORTION OF TRACT No. 1129, RAYMUS MANOR NORTH UNIT 1, VOL. 23 MAPS AND PLATS, PAGE 67, SAN JOAQUIN COUNTY RECORDS.



T01S, R07E, M.D.M.

CORNER TYPE
Government Corner Control
Meander Property
Rancho Other

Date of Survey AUGUST 15, 2017

COORDINATES (Optional)
N. _____ E. _____
Elevation _____
Units Metric U.S. Survey Foot
Horizontal Datum NAD 83
Zone III Epoch Date 1991.35
Vertical Datum _____
 Complies with Public Resources Code §§8801-8819
 Complies with Public Resources Code §§8890-8902

PLS Act Ref: 8765(d) 8771 8773 Other: _____
Corner/Monument: Left as found Established Rebuilt Pre-Construction
 Found and tagged Reestablished Referenced Post-Construction

Narrative of corner identified and monument as found, set, reset, replaced, or removed:
 See sheet #2 for description(s) :

SURVEYOR'S STATEMENT

This Corner Record was prepared by me or under my direction in conformance with the Professional Land Surveyors' Act on October 15th, 2018.
Signed [Signature] P.L.S. or R.C.E. No. 7051



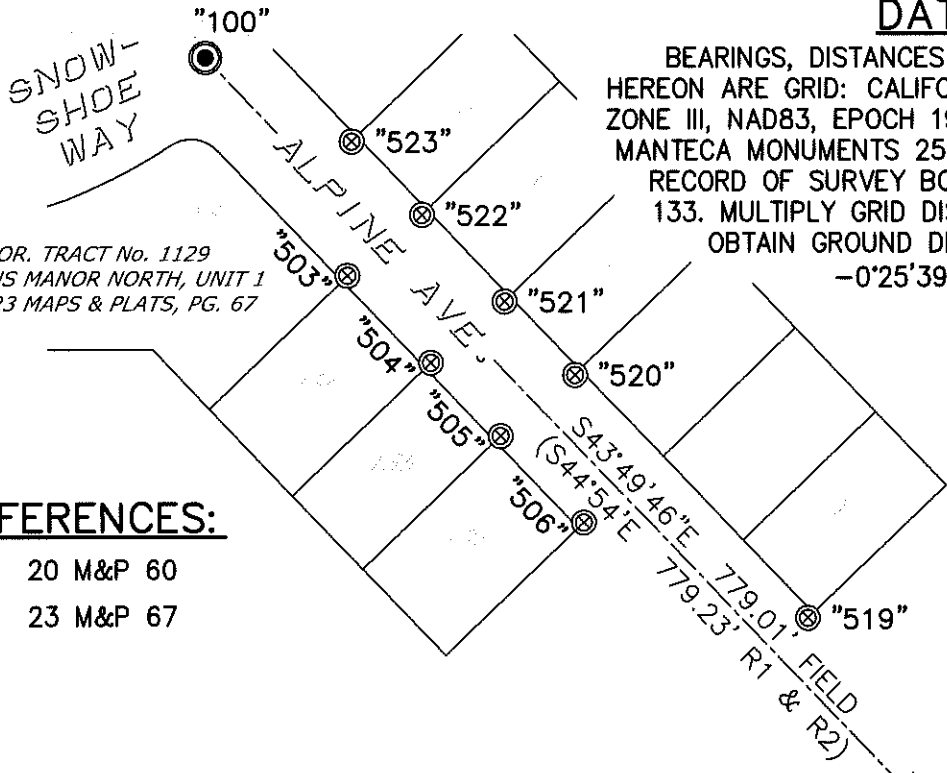
COUNTY SURVEYOR'S STATEMENT

This Corner Record was received November 30, 2018 and examined and filed December 24, 2018.
Signed James E. Hart P.L.S. or R.C.E. No. 8657
Title Acting County Surveyor
County Surveyor's Comment _____



DATUM STATEMENT:

BEARINGS, DISTANCES AND COORDINATES SHOWN HEREON ARE GRID: CALIFORNIA COORDINATE SYSTEM, ZONE III, NAD83, EPOCH 1991.35, BASED ON CITY OF MANTECA MONUMENTS 256 AND 257, AS SHOWN ON RECORD OF SURVEY BOOK 33 OF SURVEYS, PAGE 133. MULTIPLY GRID DISTANCES BY 1.0000703 TO OBTAIN GROUND DISTANCES. MAPPING ANGLE: -0°25'39.45" TAKEN AT POINT 257.



POR. TRACT No. 1129
RAYMUS MANOR NORTH, UNIT 1
VOL. 23 MAPS & PLATS, PG. 67

POR. TRACT No. 1003
RAYMUS MANOR, UNIT 10
VOL. 20 MAPS & PLATS, PG. 60

REFERENCES:

- R1 20 M&P 60
- R2 23 M&P 67

STATEMENT OF PURPOSE:

THE PURPOSE OF THIS SURVEY IS TO IDENTIFY AND RECORD THE LOCATION OF EXISTING MONUMENTS PURSUANT TO CALIFORNIA BUSINESS AND PROFESSIONS CODE §§ 8771.(b) PRIOR TO PG&E IMPROVEMENTS. NO CLAIM IS MADE AS TO THE RELATIONSHIP OF THE MONUMENTS SHOWN HEREON TO THE EXISTING PROPERTY LINES.

LEGEND:

- ▲ CONTROL STATION PER 33 S 133
- FD. CENTERLINE MON. IN WELL
- ⊗ FD. CHISLED CROSS, PER 23 M&P 67



COORDINATED POSITIONS:

100	2117770.61	6358895.85	3/4" IRON PIN IN MON. WELL PER 23 M&P 67
101	2117208.63	6359435.33	3/4" IRON PIN IN MON. WELL PER 20 M&P 60
256	2118871.85	6359807.50	3/4" IRON PIPE IN MON. WELL PER 33 S 133
257	2116233.80	6359877.36	3/4" IRON PIPE IN MON. WELL PER 33 S 133
503	2117652.74	6358973.16	CUT + PER 23 M&P 67
504	2117605.62	6359018.37	CUT + PER 23 M&P 67
505	2117566.01	6359056.40	CUT + PER 23 M&P 67
506	2117519.13	6359101.47	CUT + PER 23 M&P 67
519	2117467.29	6359223.09	CUT + PER 23 M&P 67
520	2117599.02	6359096.72	CUT + PER 23 M&P 67
521	2117638.77	6359058.56	CUT + PER 23 M&P 67
522	2117685.59	6359013.50	CUT + PER 23 M&P 67
523	2117725.27	6358975.47	CUT + PER 23 M&P 67

