

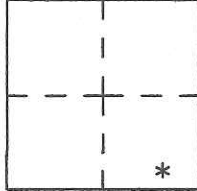
CORNER RECORD

Agency Index CR-18-179
Document Number _____

City of Ripon County of San Joaquin, California
Brief Legal Description Southeast corner of Parcel shown on Bk 27 RS 110

CORNER TYPE

COORDINATES (Optional)



Government Corner Control
Meander Property
Rancho Other

N. _____ E. _____
Elevation. _____
Units Metric U.S. Survey Foot
Horizontal Datum NAD 83
Zone 3 Epoch Date 2005
Vertical Datum _____

Date of Survey April 18, 2018

Complies with Public Resources Code §§8801-8819
 Complies with Public Resources Code §§8890-8902

S.13 T.2S.,R7E
M.D.M.

PLS Act Ref.: 8765(d) 8771 8773 Other:
Corner/ Monument: Left as found Established Rebuilt Pre-Construction
 Found and tagged Reestablished Referenced Post-Construction

Narrative of corner identified and monument as found, set, reset, replaced, or removed:

See sheet #2 for description(s):

Using the City of Ripon GPS survey control network, Record of Survey Book 35, page 196, as coordinate control, I measured the tie points and the found monuments as found per Record of Survey Book 27, page 110. I replaced the eastern most railroad spike which was lost during construction.

SURVEYOR'S STATEMENT

This Corner Record was prepared by me or under my direction in conformance with

the Professional Land Surveyor's Act on April 18, 2018

Signed [Signature] P.L.S. or R.C.E. No. PLS 5443



COUNTY SURVEYOR'S STATEMENT

This Corner Record was received November 9, 2018

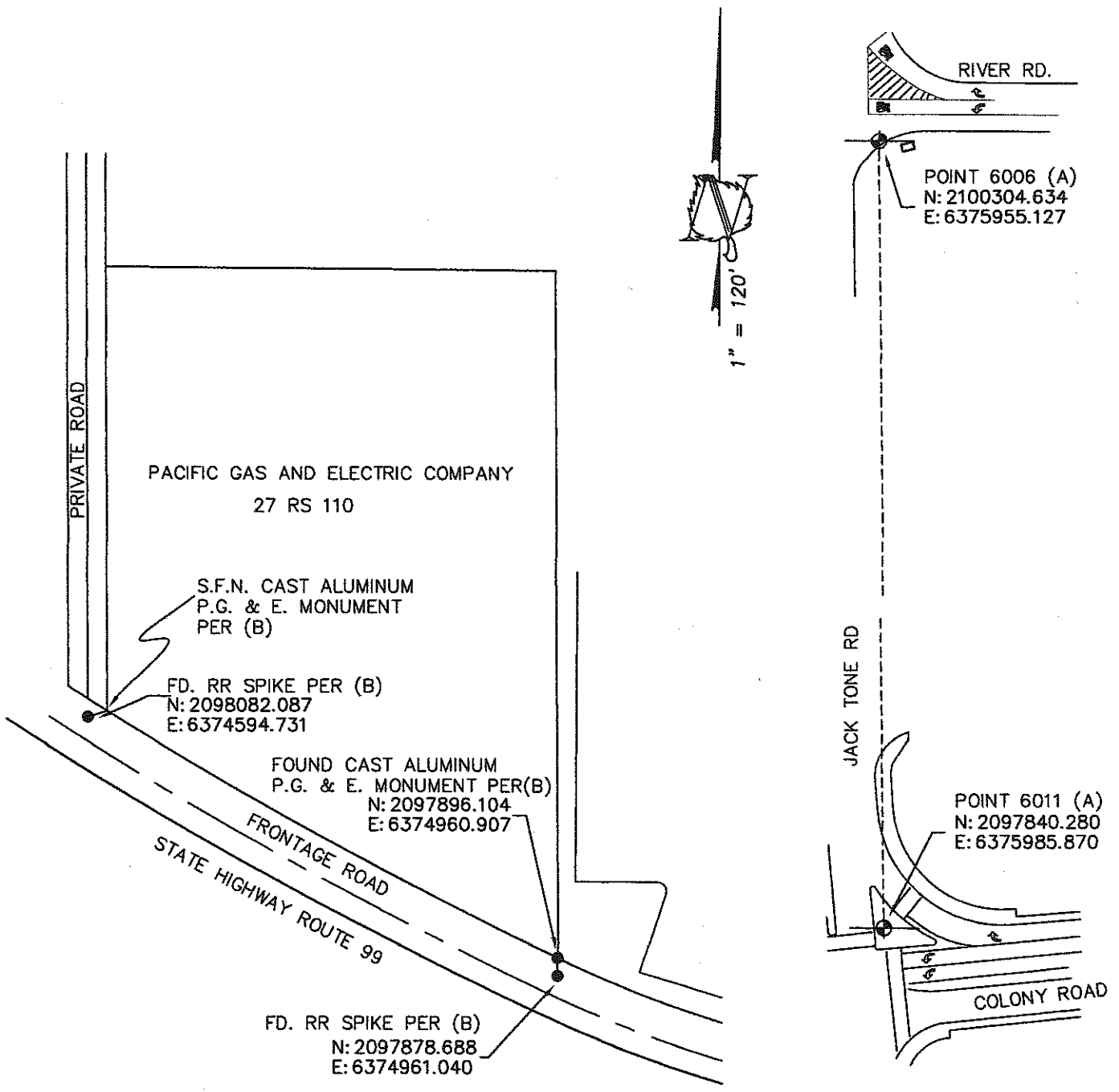
and examined and filed November 28, 2018

Signed [Signature] P.L.S. or R.C.E. No. 8657

Title Acting County Surveyor

County Surveyor's Comment





- (A) BOOK 35 OF SURVEYS, PAGE 196
- (B) BOOK 27 OF SURVEYS, PAGE 110

- " FOUND 2"-1/2" BRASS CAP FOR CITY OF RIPON CONTROL POINT PER (A)
- " FOUND MONUMENT PER (B)

NOTE:
COORDINATES SHOWN WERE TAKEN
FROM CITY OF RIPON G.P.S. SURVEY
CONTROL NETWORK RECORD OF SURVEY
BOOK 35, PAGE 196, SAN JOAQUIN
COUNTY RECORDS. COMBINED SCALE
FACTOR: 0.999926085



BEFORE CONSTRUCTION