

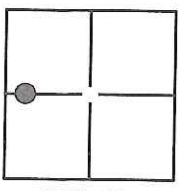
# CORNER RECORD

Agency Index: CR-18-177

Document Number: \_\_\_\_\_

City of STOCKTON County of SAN JOAQUIN, California

Brief Legal Description MONUMENT IN A MONUMENT WELL AT THE SOUTHWEST CORNER OF HAMMER LANE AND THORNTON ROAD. LOCATED IN THE WEST HALF OF SECTION 16, T.2N, R.6E, M.D.B.&M.



SEC. 16  
T.2N, R.6E

### CORNER TYPE

- Government Corner  Control
- Meander  Property
- Rancho  Other

Date of Survey 9-18-2018

### COORDINATES (Optional)

N. \_\_\_\_\_ E. \_\_\_\_\_  
 Elevation: 11.00  
 Units Metric  U.S. Survey Foot   
 Horizontal Datum: \_\_\_\_\_  
 Zone: \_\_\_\_\_ Epoch Date: \_\_\_\_\_  
 Vert. Datum: NVGD29

- Complies with Public Resources Code §§8801-8819
- Complies with Public Resources Code §§8890-8902

PLS Act Ref:  8765(d)  8771  8773  Other:

Corner/  
 Monument:  Left as found  Established  Rebuilt  Pre-Construction  
 Found and Tagged  Reestablished  Referenced  Post-Construction

Narrative of corner identified and monument as found, set, reset, replaced, or removed:  
 See sheet #2 for description(s):

SET BRASS DISK STAMPED 40 B 1907, IN A MONUMENT WELL AT THE SOUTHWEST CORNER AT THE INTERSECTION OF HAMMER LANE AND THORNTON ROAD. LOCATED IN THE WEST HALF OF SECTION 16, T.2N, R.6E, M.D.B.&M.

### SURVEYOR'S STATEMENT

This Corner Record was prepared by me or under my direction in conformance with the Land Surveyors' Act on SEPTEMBER 26, 2018,

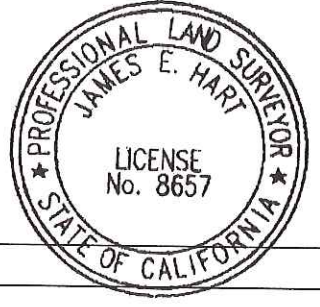


Signed [Signature] P.L.S. or ~~R.C.E.~~ Number 6953

### COUNTY SURVEYOR'S STATEMENT

This Corner Record was received November 7, 2018  
 and examined and filed November 26, 2018

Signed James E. Hart P.L.S. or ~~R.C.E.~~ No: 8657  
 Title Acting County Surveyor



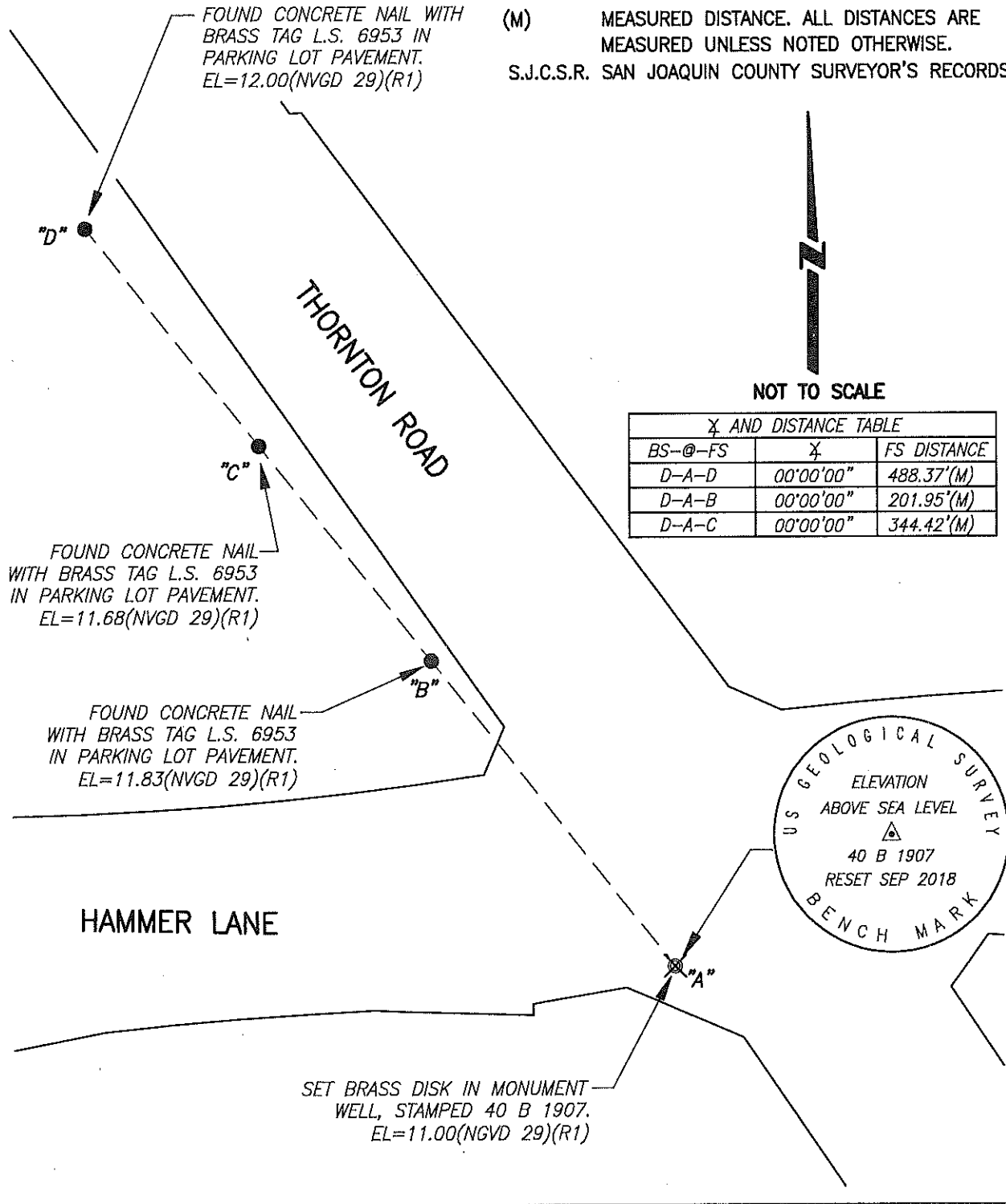
County Surveyor's Comment \_\_\_\_\_  
 \_\_\_\_\_  
 \_\_\_\_\_

**REFERENCE:**

(R1) CR-17-156, S.J.C.S.R.

**LEGEND:**

- ⊗ SET MONUMENT AS NOTED.
- FOUND MONUMENT AS NOTED.
- CR DENOTES CORNER RECORD
- (M) MEASURED DISTANCE. ALL DISTANCES ARE MEASURED UNLESS NOTED OTHERWISE.
- S.J.C.S.R. SAN JOAQUIN COUNTY SURVEYOR'S RECORDS



FOUND CONCRETE NAIL WITH BRASS TAG L.S. 6953 IN PARKING LOT PAVEMENT. EL=12.00(NVGD 29)(R1)

FOUND CONCRETE NAIL WITH BRASS TAG L.S. 6953 IN PARKING LOT PAVEMENT. EL=11.68(NVGD 29)(R1)

FOUND CONCRETE NAIL WITH BRASS TAG L.S. 6953 IN PARKING LOT PAVEMENT. EL=11.83(NVGD 29)(R1)

SET BRASS DISK IN MONUMENT WELL, STAMPED 40 B 1907. EL=11.00(NVGD 29)(R1)

Bearing and Distance Table		
BS-@-FS	Bearing	FS Distance
D-A-D	00°00'00"	488.37'(M)
D-A-B	00°00'00"	201.95'(M)
D-A-C	00°00'00"	344.42'(M)

US GEOLOGICAL SURVEY  
ELEVATION ABOVE SEA LEVEL  
40 B 1907  
RESET SEP 2018  
BENCH MARK