

# CORNER RECORD

Agency Index CR-18-173

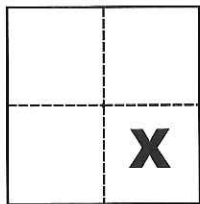
Document Number \_\_\_\_\_

City of \_\_\_\_\_ County of San Joaquin, California

Brief Legal Description \_\_\_\_\_ Parcel "A" per P.M. 8-166, S.J.C.R.

### CORNER TYPE

### COORDINATES (Optional)



Government Corner  Control   
 Meander  Property   
 Rancho  Other

N. \_\_\_\_\_ E. \_\_\_\_\_

Elevation \_\_\_\_\_

Units Metric  U.S. Survey Foot

Horizontal Datum \_\_\_\_\_

Zone \_\_\_\_\_ Epoch Date \_\_\_\_\_

Date of Survey September 12, 2018

Vertical Datum \_\_\_\_\_

Complies with Public Resources Code §§8801-8819

Complies with Public Resources Code §§8890-8902

Sec. 16, T.1S., R.7E.,  
M.D.B. & M.

PLS Act Ref.:  8765(d)  8771  8773  Other:

Corner/Monument:  Left as found  Established  Rebuilt  Pre-Construction

Found and tagged  Reestablished  Referenced  Post-Construction

Narrative of corner identified and monument as found, set, reset, replaced, or removed:

See sheet #2 for description(s):

### SURVEYOR'S STATEMENT

This Corner Record was prepared by me or under my direction in conformance with

the Professional Land Surveyors' Act on Sept. 12, 2018

Signed Michael L. Quartaroli P.L.S. or R.C.E. No. L.S. 4450



### COUNTY SURVEYOR'S STATEMENT

This Corner Record was received October 26, 2018

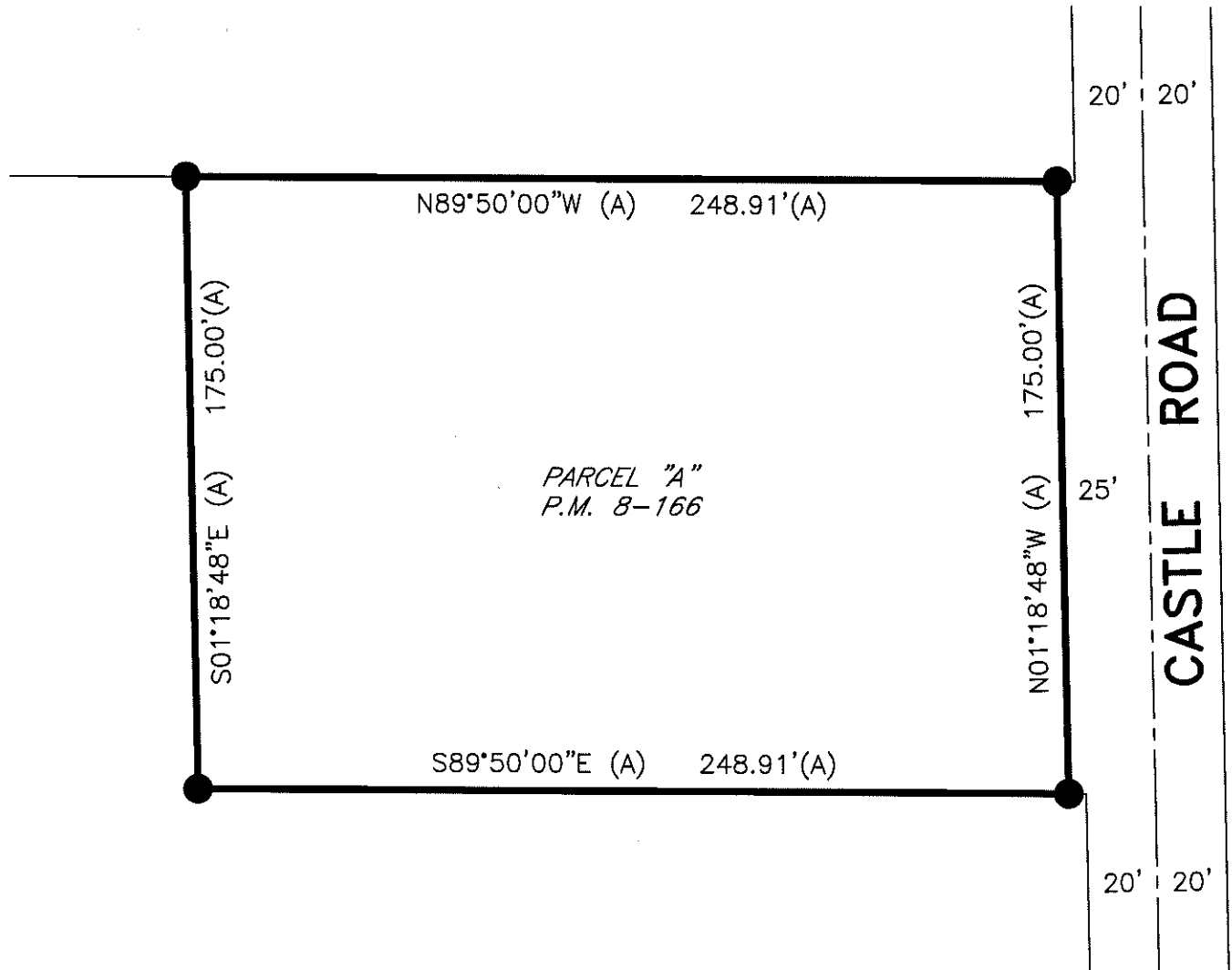
and examined and filed October 26, 2018

Signed James E. Hart P.L.S. or R.C.E. No. 8657

Title Acting County Surveyor

County Surveyor's Comment \_\_\_\_\_



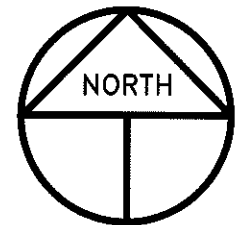


### LEGEND

- INDICATES FOUND 3/4" PIPE TAGGED L.S. 4450 PER (A), SET PLASTIC CAP STAMPED LS 4450
- P.M. INDICATES PARCEL MAP, BOOK AND PAGE, S.J.C.R.
- S.J.C.R. INDICATES SAN JOAQUIN COUNTY RECORDS

### REFERENCE

(A) P.M. 8-166, S.J.C.R.



SCALE: 1" = 50'  
2018-201