

CORNER RECORD

Agency Index CR-18-171

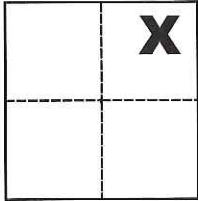
Document Number _____

City of _____ County of San Joaquin, California

Brief Legal Description W. & S. Lines of Par. "A" and S. line of Par. "B" per P.M. 8-82, S.J.C.R.

CORNER TYPE

COORDINATES (Optional)



Government Corner Control
Meander Property
Rancho Other

N. _____ E. _____

Elevation _____

Units Metric U.S. Survey Foot

Horizontal Datum _____

Zone _____ Epoch Date _____

Date of Survey September 1, 2018

Vertical Datum _____

Complies with Public Resources Code §§8801-8819

Complies with Public Resources Code §§8890-8902

Sec. 10, T.3S., R.5E.,
M.D.B. & M.

PLS Act Ref.: 8765(d) 8771 8773 Other:

Corner/Monument: Left as found Established Rebuilt Pre-Construction

Found and tagged Reestablished Referenced Post-Construction

Narrative of corner identified and monument as found, set, reset, replaced, or removed:

See sheet #2 for description(s):

SURVEYOR'S STATEMENT

This Corner Record was prepared by me or under my direction in conformance with

the Professional Land Surveyors' Act on Oct. 8, 2018

Signed Michael L. Quarantoni P.L.S. or R.C.E. No. L.S. 4450



COUNTY SURVEYOR'S STATEMENT

This Corner Record was received October 26, 2018

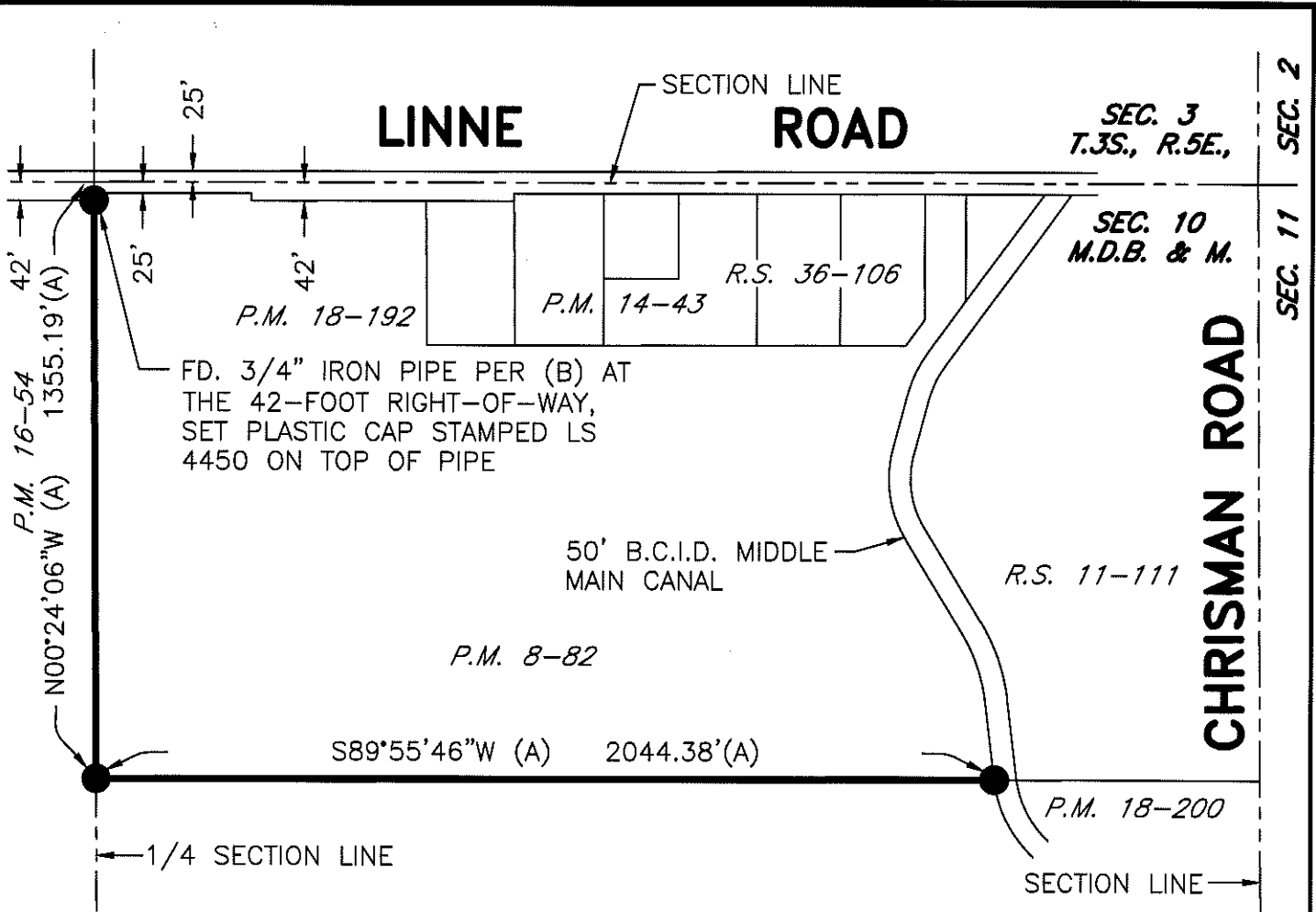
and examined and filed October 26, 2018

Signed James E. Hart P.L.S. or R.C.E. No. 8657

Title Acting County Surveyor

County Surveyor's Comment _____



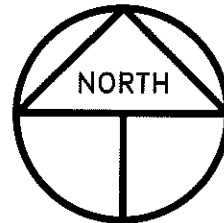


LEGEND

- INDICATES FOUND 3/4" IRON PIPE PER (A), SET PLASTIC CAP STAMPED LS 4450 ON TOP OF PIPE, UNLESS OTHERWISE NOTED
- P.M. INDICATES PARCEL MAP, BOOK AND PAGE, S.J.C.R.
- S.J.C.R. INDICATES SAN JOAQUIN COUNTY RECORDS
- B.C.I.D. INDICATES BANTA CARBONA IRRIGATION DISTRICT

REFERENCES

- (A) P.M. 8-82, S.J.C.R.
- (B) P.M. 16-54, S.J.C.R.



SCALE: 1" = 400'
2018-199