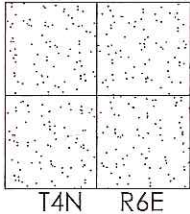


CORNER RECORD

Agency Index CR-18-170
Document Number _____

City of _____ County of San Joaquin, California

Brief Legal Description LOWER SACRAMENTO ROAD @ AUGUSTA STREET
WITHIN SECTION 34, TOWNSHIP 4 NORTH, RANGE 6 EAST, MOUNT DIABLO BASE & MERIDIAN



T4N R6E

CORNER TYPE

Government Corner Control
Meander Property
Rancho Other

Date of Survey June 29, 2018

COORDINATES (Optional)

N. _____ E. _____

Elevation. _____

Units Metric U.S. Survey Foot

Horizontal Datum _____

Zone _____ Epoch Date _____

Vertical Datum _____

Complies with Public Resources Code §§8801-8819

Complies with Public Resources Code §§8890-8902

PLS Act Ref.: 8765(d) 8771 8773 Other:

Corner/Monument: Left as found Established Rebuilt Pre-Construction

Found and tagged Reestablished Referenced Post-Construction

Narrative of corner identified and monument as found, set, reset, replaced, or removed:

See sheet #2 for description(s):

SURVEYOR'S STATEMENT

This Corner Record was prepared by me or under my direction in conformance with
the Professional Land Surveyor's Act on July 16, 2018

Signed James E. Hart P.L.S. or P.C.E. No. 8657



COUNTY SURVEYOR'S STATEMENT

This Corner Record was received October 5, 2018

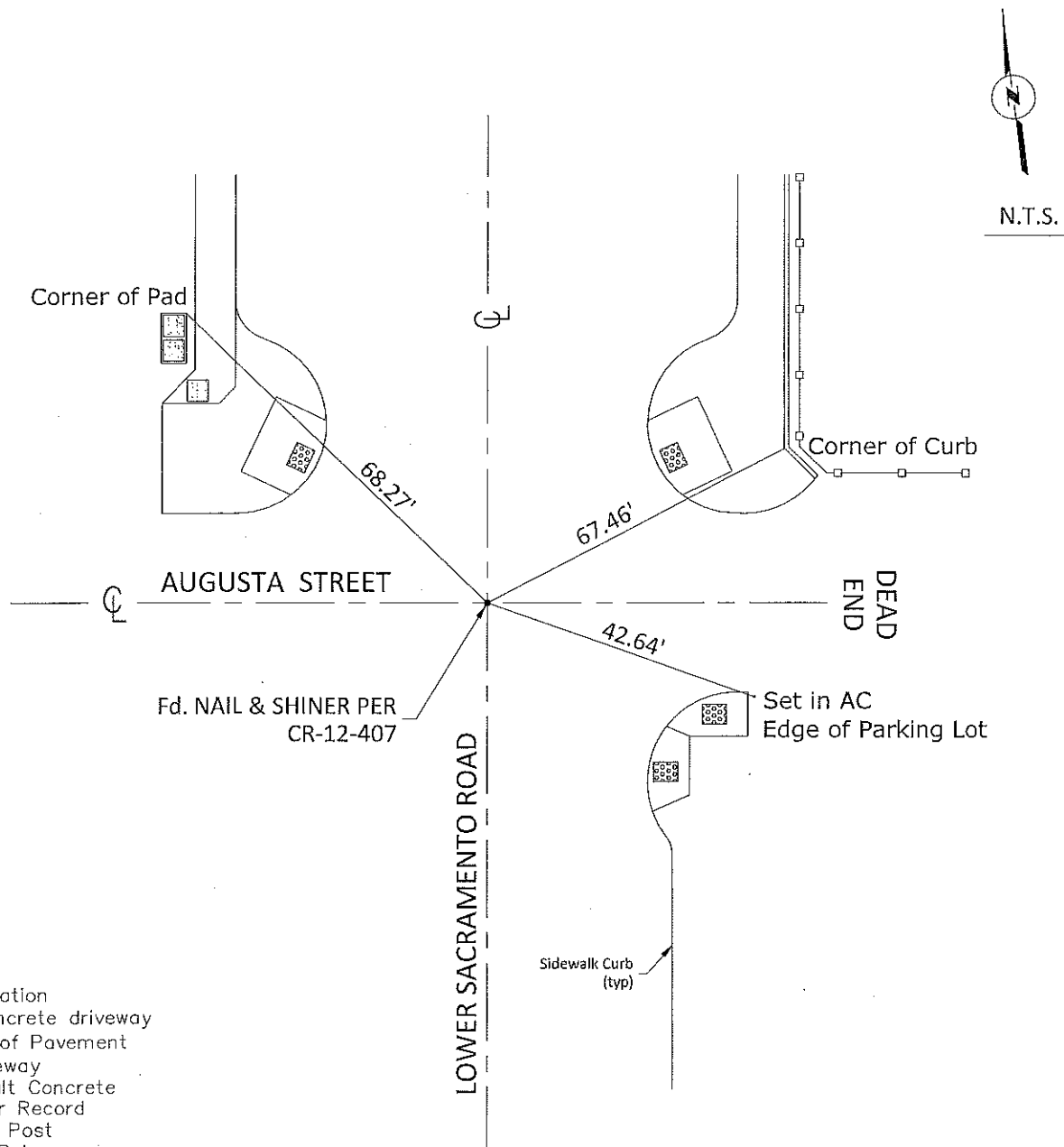
and examined and filed October 24, 2018

Signed James E. Hart P.L.S. or P.C.E. No. 8657

Title Acting County Surveyor

County Surveyor's Comment





Elev.=Elevation
 CDWY=Concrete driveway
 EP=Edge of Pavement
 DWY=Driveway
 AC=Asphalt Concrete
 CR=Corner Record
 FP=Fence Post
 JP=Joint Pole
 LP=Light Pole
 PP=Power Pole
 GP=Cuy Pole
 SP=Service Pole
 TP=Telephone Pole
 S.F.N.=Searched Found Nothing
 N.T.S.=Not To Scale
 M&P=Maps & Plats
 PM=Parcel Map
 RS=Record of Survey
 FB=Field Book
 N=North
 DI=Drain Inlet
 TOC=Top of Curb

Set=Conc. Nail unless otherwise noted
 Fd.=Found Conc. Nail with Brass Washer Stamped
 "S.J. Co.", unless otherwise noted
 Note: Found Monuments are not tagged
 unless otherwise noted.

"No Attempt Was Made to Verify the Monument(s)"