

CORNER RECORD

Agency Index _____

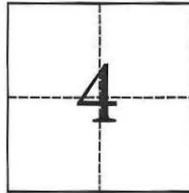
Document Number CR -18-167

City of _____ (APN 086-010-05) County of San Joaquin, California

Brief Legal Description EBMUD right-of-way south of Eight Mile Rd., west of Alpine Rd.

CORNER TYPE

COORDINATES (Optional)



T2N R7E
MDB&M

Government Corner Control
Meander Property
Rancho Other

Date of Survey July 3, 2018

N. _____ E. _____

Elevation _____

Units Metric U.S. Survey Foot

Horizontal Datum _____

Zone _____ Epoch Date _____

Vertical Datum _____

Complies with Public Resources Code §§8801-8819

Complies with Public Resources Code §§8890-8902

PLS Act Ref.: 8765(d) 8771 8773 Other:

Corner/Monument: Left as found Established Rebuilt Pre-Construction
 Found and tagged Reestablished Referenced Post-Construction

Narrative of corner identified and monument as found, set, reset, replaced, or removed:

See sheet #2 for description(s):

Set 3.5" brass disk on concrete structure, stamped as noted on Sheet 2. New Monument was re-set using the nearest EBMUD centerline monuments, as shown on sheet 2.

SURVEYOR'S STATEMENT

This Corner Record was prepared by me or under my direction in conformance with

the Professional Land Surveyors' Act on September 4, 2018

Signed James M. Mangin P.L.S. or R.C.E. No. 7263



COUNTY SURVEYOR'S STATEMENT

This Corner Record was received October 22, 2018

and examined and filed October 22, 2018

Signed James E. Hart P.L.S. or R.C.E. No. 8657

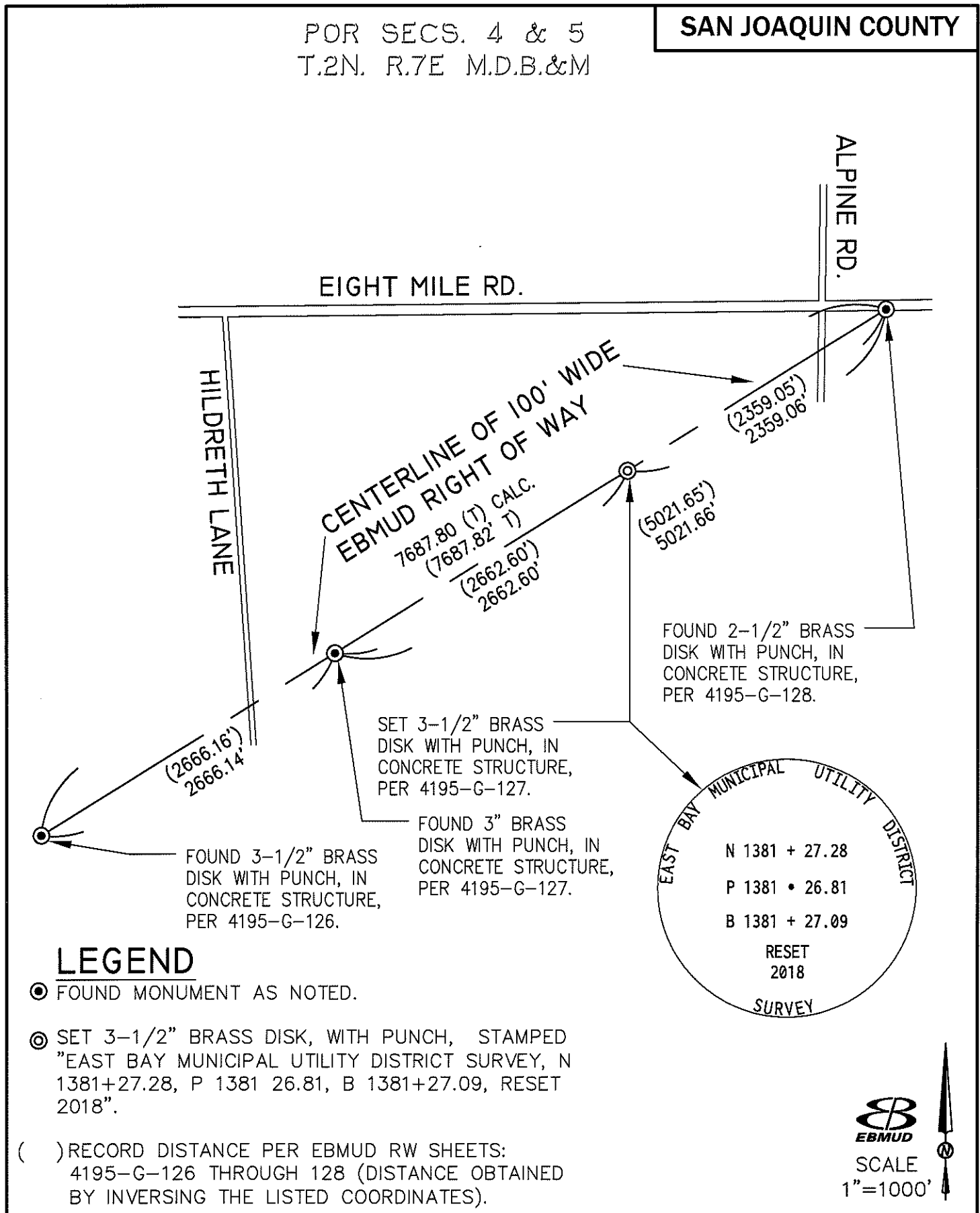
Title Acting County Surveyor

County Surveyor's Comment _____



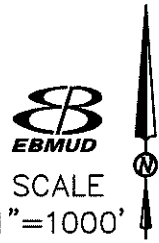
POR SECS. 4 & 5
T.2N. R.7E M.D.B.&M

SAN JOAQUIN COUNTY



LEGEND

- ⊙ FOUND MONUMENT AS NOTED.
- ⊙ SET 3-1/2" BRASS DISK, WITH PUNCH, STAMPED "EAST BAY MUNICIPAL UTILITY DISTRICT SURVEY, N 1381+27.28, P 1381 26.81, B 1381+27.09, RESET 2018".
- () RECORD DISTANCE PER EBMUD RW SHEETS: 4195-G-126 THROUGH 128 (DISTANCE OBTAINED BY INVERSING THE LISTED COORDINATES).



ADDRESS: EBMUD MOKELUMNE AQUEDUCT CENTERLINE MONUMENT AT STATION 1381+26.81
APN: 086-010-05