

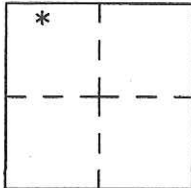
CORNER RECORD

Agency Index CR-18-166
Document Number _____

City of Ripon County of San Joaquin, California
Brief Legal Description east line of lands shown in Bk 32 RS 192

CORNER TYPE

COORDINATES (Optional)



Government Corner Control
Meander Property
Rancho Other

N. _____ E. _____
Elevation. _____
Units Metric U.S. Survey Foot
Horizontal Datum NAD 83
Zone 3 Epoch Date 2005
Vertical Datum _____

Date of Survey April 18, 2018

Complies with Public Resources Code §§8801-8819
 Complies with Public Resources Code §§8890-8902

S.29 T.2S., R8E
M.D.M.

PLS Act Ref.: 8765(d) 8771 8773 Other:
Corner/Monument: Left as found Established Rebuilt Pre-Construction
 Found and tagged Reestablished Referenced Post-Construction

Narrative of corner identified and monument as found, set, reset, replaced, or removed:

See sheet #2 for description(s):

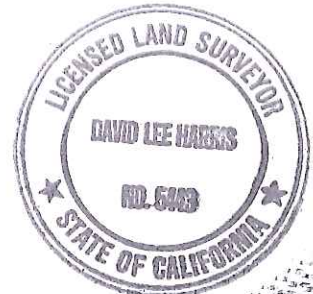
The pk nail and washer tagged L.S. 5078 "Majors Engr", was destroyed during construction. I placed a 3/4" iron pipe with tag L.S.5443, flush with new pavement to replace the Major's engineering point.

SURVEYOR'S STATEMENT

This Corner Record was prepared by me or under my direction in conformance with

the Professional Land Surveyor's Act on April 18, 2018

Signed David Lee Harris P.L.S. or R.C.E. No. PLS 5443



COUNTY SURVEYOR'S STATEMENT

This Corner Record was received October 4, 2018

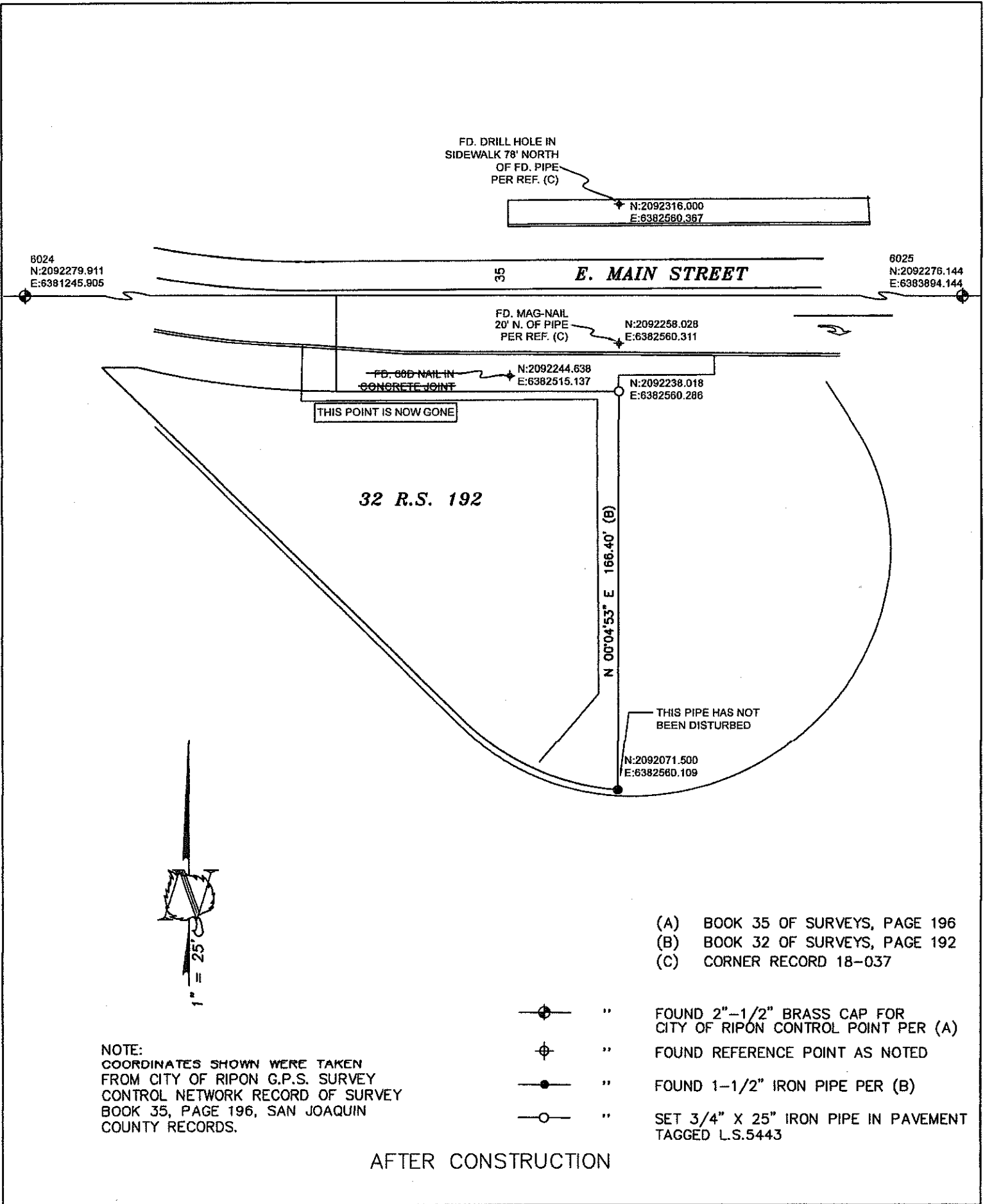
and examined and filed October 4, 2018

Signed James E. Hart P.L.S. or R.C.E. No. 8657

Title Acting County Surveyor

County Surveyor's Comment





NOTE:
 COORDINATES SHOWN WERE TAKEN
 FROM CITY OF RIPON G.P.S. SURVEY
 CONTROL NETWORK RECORD OF SURVEY
 BOOK 35, PAGE 196, SAN JOAQUIN
 COUNTY RECORDS.

- (A) BOOK 35 OF SURVEYS, PAGE 196
 - (B) BOOK 32 OF SURVEYS, PAGE 192
 - (C) CORNER RECORD 18-037
- ⊙ " FOUND 2"-1/2" BRASS CAP FOR CITY OF RIPON CONTROL POINT PER (A)
 - ⊕ " FOUND REFERENCE POINT AS NOTED
 - " FOUND 1-1/2" IRON PIPE PER (B)
 - " SET 3/4" X 25" IRON PIPE IN PAVEMENT TAGGED L.S.5443

AFTER CONSTRUCTION