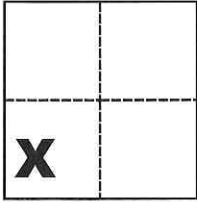


# CORNER RECORD

Agency Index CR-18-165  
 Document Number \_\_\_\_\_

City of Manteca County of San Joaquin, California  
 Brief Legal Description 1.168 Ac. Parcel per P.M. 2-83



Sec. 34, T.1S., R.7E.,  
 M.D.B. & M.

### CORNER TYPE

Government Corner  Control   
 Meander  Property   
 Rancho  Other

Date of Survey July 27, 2018

### COORDINATES (Optional)

N. \_\_\_\_\_ E. \_\_\_\_\_  
 Elevation \_\_\_\_\_  
 Units Metric  U.S. Survey Foot   
 Horizontal Datum \_\_\_\_\_  
 Zone \_\_\_\_\_ Epoch Date \_\_\_\_\_  
 Vertical Datum \_\_\_\_\_

Complies with Public Resources Code §§8801-8819  
 Complies with Public Resources Code §§8890-8902

PLS Act Ref.:  8765(d)  8771  8773  Other:  
 Corner/Monument:  Left as found  Established  Rebuilt  Pre-Construction  
 Found and tagged  Reestablished  Referenced  Post-Construction

Narrative of corner identified and monument as found, set, reset, replaced, or removed:  
 See sheet #2 for description(s):

### SURVEYOR'S STATEMENT

This Corner Record was prepared by me or under my direction in conformance with  
 the Professional Land Surveyors' Act on Sept. 7, 2018

Signed Michael L. Quarantoni P.L.S. or R.C.E. No. L.S. 4450



### COUNTY SURVEYOR'S STATEMENT

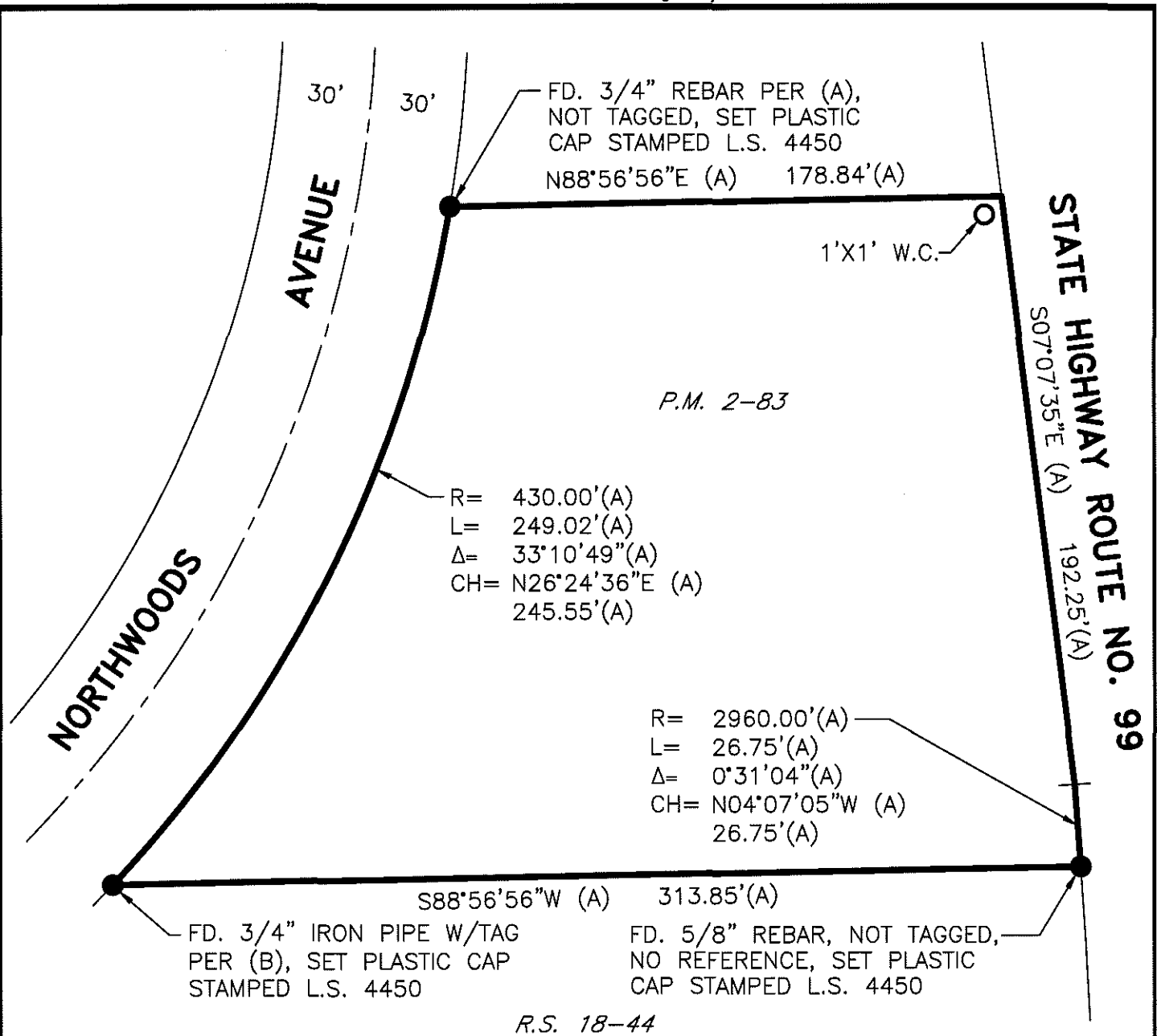
This Corner Record was received September 28, 2018  
 and examined and filed September 28, 2018

Signed James E. Hart P.L.S. or R.C.E. No. 8657

Title Acting County Surveyor

County Surveyor's Comment \_\_\_\_\_



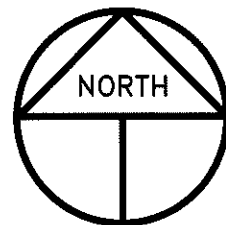


**LEGEND**

- INDICATES SET 3/4" X 30"Ø PIPE TAGGED L.S. 4450
- INDICATES FOUND MONUMENT AS NOTED
- P.M. INDICATES PARCEL MAP, BOOK AND PAGE, S.J.C.R.
- R.S. INDICATES RECORD OF SURVEY, BOOK AND PAGE, S.J.C.R.
- S.J.C.R. INDICATES SAN JOAQUIN COUNTY RECORDS
- DOC. NO. INDICATES DOCUMENT NUMBER, S.J.C.R.
- W.C. INDICATES WITNESS CORNER

**REFERENCE**

- (A) P.M. 2-83, S.J.C.R.
- (B) R.S. 18-44, S.J.C.R.



SCALE: 1" = 50'  
2018-159